

# Hydraulic Piston Pumps

Series P2 / P3  
Variable Displacement

aerospace  
climate control  
electromechanical  
filtration  
fluid & gas handling  
**hydraulics**  
pneumatics  
process control  
sealing & shielding



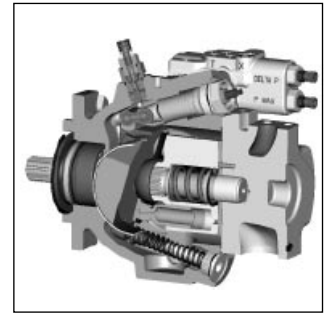
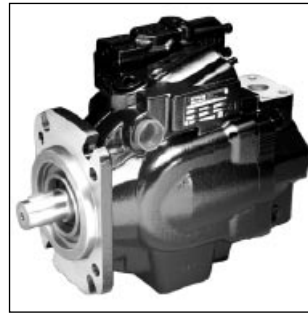
ENGINEERING YOUR SUCCESS.

Description	Page
Technical Information	3
Ordering Code	4
Control Options "PA"	6
Control Options "RA"	7
Control Options "LA" and "LB"	8
Control Options "TA", "TB", "TC" and "TD"	9
P2 Typical Torque Control Characteristics	10
P3 Typical Torque Control Characteristics	11
Hydr. Generated Noise / Performance Curves	12
Ripple chamber	12
<b>P2 Performance data</b>	
Noise characteristics at max./min. displacement	12
Series-typical drive power at full displacement	13
Series-typical compensated power	14
Series-typical efficiency at full displacement at 1800 rpm	15
Series-typical flow vs. pressure	16
Series-typical compensated case drain flow	17
Series-typical inlet characteristics vs. speed at various percentage displacements	18
<b>P2 Dimensions</b>	
P2060 Mounting flange	19
P2060 Side port	20
P2060 Rear port	21
P2060 Thru-Shaft Option	22
P2075 Mounting flange	23
P2075 Side port	24
P2075 Rear port	25
P2075 Thru-shaft option	26
P2105 Mounting flange	27
P2105 Side port	28
P2105 Thru-shaft option	29
P2145 Mounting flange	30
P2145 Side port	31
P2145 Thru-shaft option	32
P2145 Thru-drive option	33
P2 Shaft options	34
<b>P3 Performance data</b>	
Series-typical noise characteristics at max./min. displacement	35
Series-typical drive power at full displacement	35
Series-typical compensated power	36
Series-typical efficiency at full displ. at 1800 rpm	36
Series-typical flow vs. pressure	37
Series-typical compensated control drain flow	37
Series-typical inlet characteristics vs. speed at various percentage displacements	38
<b>P3 Dimensions</b>	
P3105 Mounting flange	39
P3105 Side port	40
P3105 Thru-shaft option	41
P3145 Mounting flange	42
P3145 Side port	43
P3145 Thru-shaft option	44
P3145 Thru-drive option	45
P3 Shaft options	46
General installation information	47

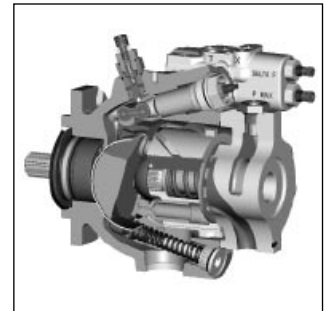
**Technical Features**

- Compact design
- Low noise level
- Service friendly
- Reliable
- Long-lasting
- Flexible
- Easy to install
- High self-priming speed

**P2 Series**

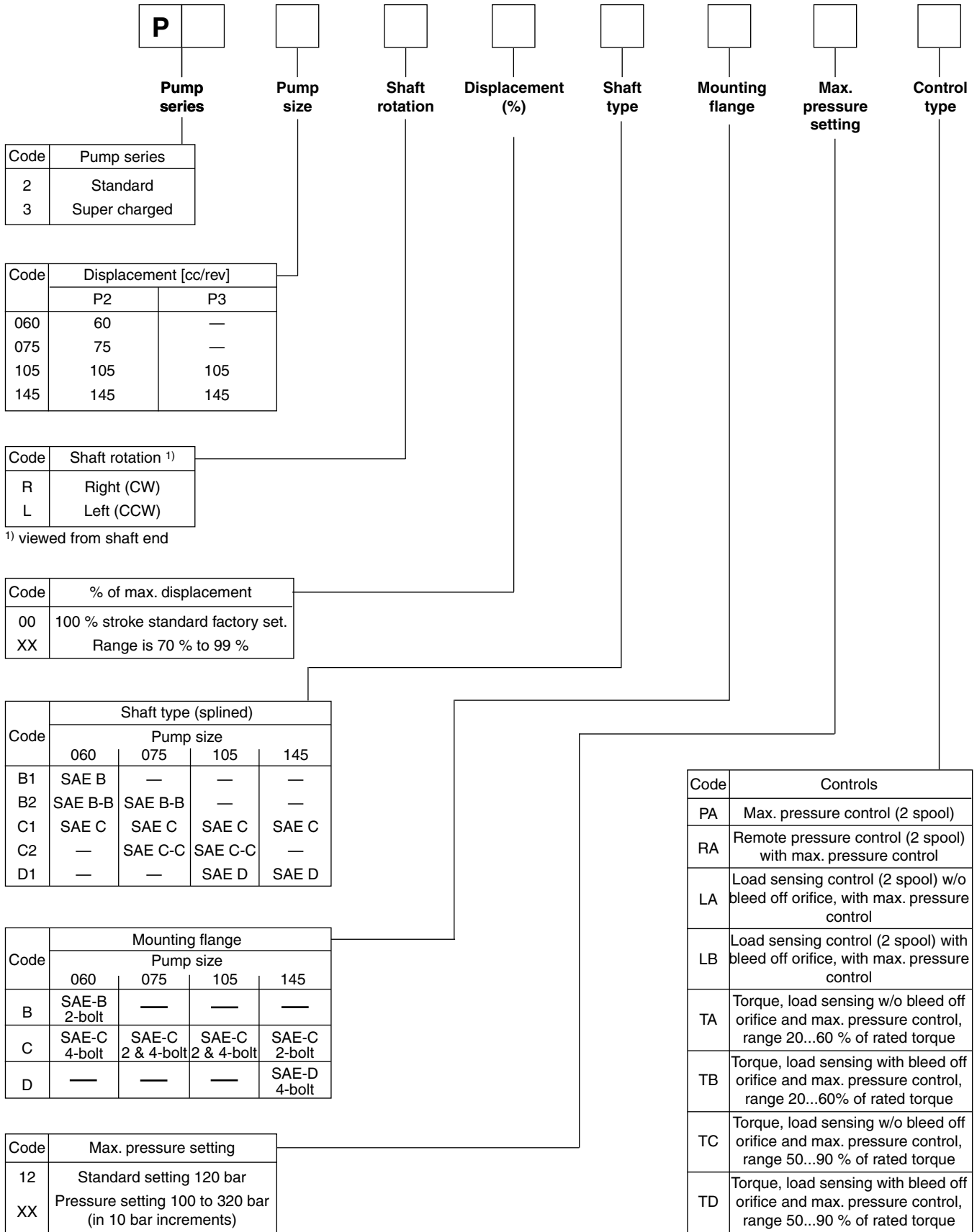


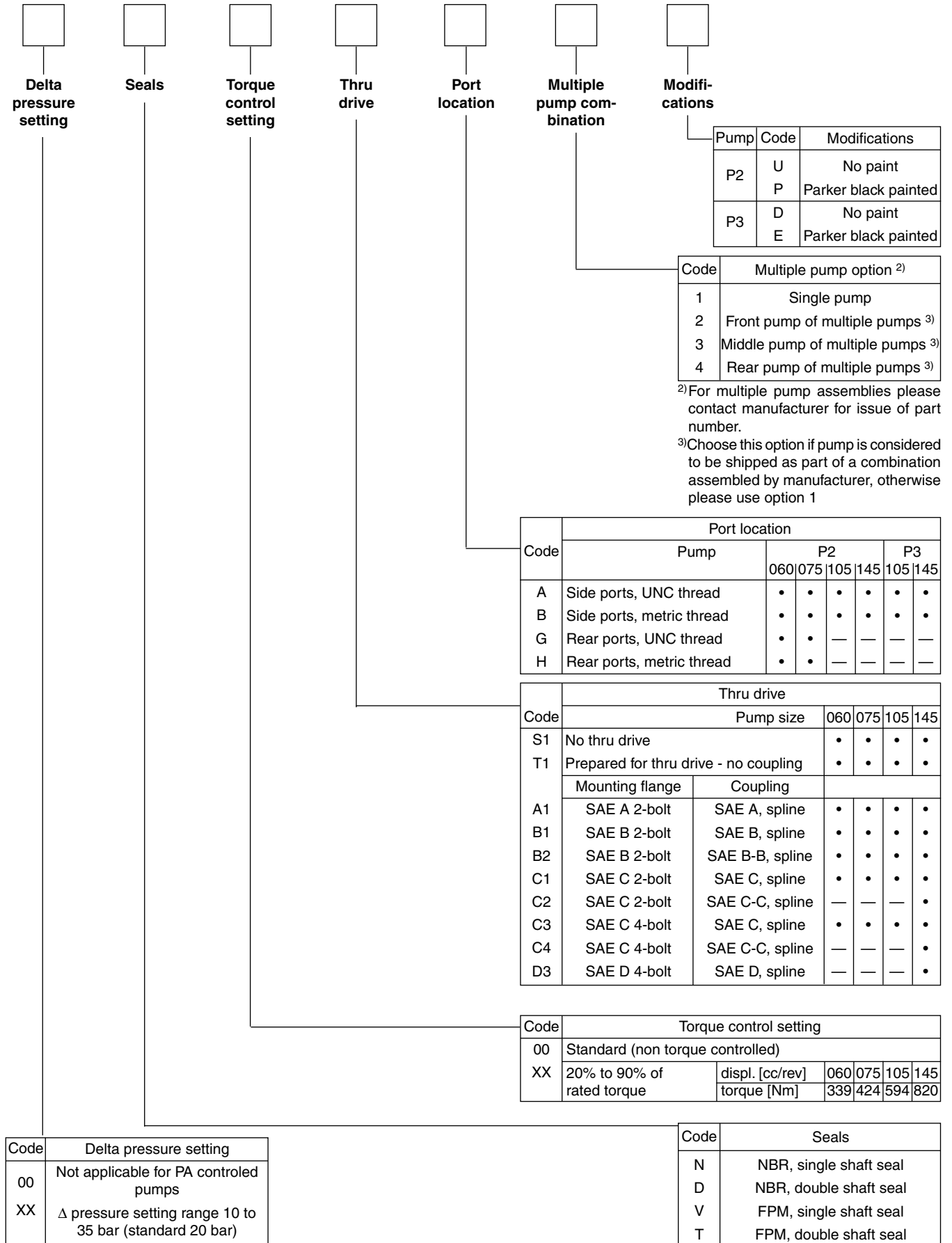
**P3 Series**



**Technical Data**

		P2 Series				P3 Series	
		P2060	P2075	P2105	P2145	P3105	P3145
<b>Frame size</b>							
Max. displacement	[cm <sup>3</sup> /rev]	60	75	105	145	105	145
Self-priming speed at 1 bar absolute inlet pressure	[rpm]	2800	2500	2300	2200	2600	2500
Max. continuous pressure	[bar]	320	320	320	320	320	320
Peak pressure	[bar]	370	370	370	370	370	370
Min. inlet pressure absolute	[bar]	0.8	0.8	0.8	0.8	0.8	0.8
at max. speed	[in Hg vacuum]	5.8	5.8	5.8	5.8	5.8	5.8
Max. inlet pressure	[bar]	10	10	10	10	1.5	1.5
Max. case drain pressure	[bar]	0.5	0.5	0.5	0.5	1	1
Noise level at full flow at 1800 rpm and 250 bar	[dbA]	74	76	78	80	78	80
Weight with load sense control	[kg]	37	44	63	78	62	76
Mass moment of inertia (at axis of shaft)	[kg m <sup>2</sup> ]	0.0061	0.0101	0.0168	0.0241	0.0177	0.0264





Pump	Code	Modifications
P2	U	No paint
	P	Parker black painted
P3	D	No paint
	E	Parker black painted

Code	Multiple pump option <sup>2)</sup>
1	Single pump
2	Front pump of multiple pumps <sup>3)</sup>
3	Middle pump of multiple pumps <sup>3)</sup>
4	Rear pump of multiple pumps <sup>3)</sup>

<sup>2)</sup>For multiple pump assemblies please contact manufacturer for issue of part number.

<sup>3)</sup>Choose this option if pump is considered to be shipped as part of a combination assembled by manufacturer, otherwise please use option 1

Code		Port location					
		Pump		P2		P3	
		060	075	105	145	105	145
A	Side ports, UNC thread	•	•	•	•	•	•
B	Side ports, metric thread	•	•	•	•	•	•
G	Rear ports, UNC thread	•	•	—	—	—	—
H	Rear ports, metric thread	•	•	—	—	—	—

Code		Thru drive				
		Pump size		060	075	105
S1	No thru drive	•	•	•	•	
T1	Prepared for thru drive - no coupling	•	•	•	•	
		Mounting flange	Coupling			
A1	SAE A 2-bolt	SAE A, spline	•	•	•	•
B1	SAE B 2-bolt	SAE B, spline	•	•	•	•
B2	SAE B 2-bolt	SAE B-B, spline	•	•	•	•
C1	SAE C 2-bolt	SAE C, spline	•	•	•	•
C2	SAE C 2-bolt	SAE C-C, spline	—	—	—	•
C3	SAE C 4-bolt	SAE C, spline	•	•	•	•
C4	SAE C 4-bolt	SAE C-C, spline	—	—	—	•
D3	SAE D 4-bolt	SAE D, spline	—	—	—	•

Code	Torque control setting					
00	Standard (non torque controlled)					
XX	20% to 90% of rated torque	displ. [cc/rev] torque [Nm]	060 339	075 424	105 594	145 820

Code	Delta pressure setting
00	Not applicable for PA controlled pumps
XX	Δ pressure setting range 10 to 35 bar (standard 20 bar)

Code	Seals
N	NBR, single shaft seal
D	NBR, double shaft seal
V	FPM, single shaft seal
T	FPM, double shaft seal

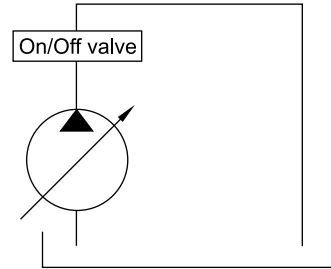
PI P2-P3 UK.PM6.5 RH



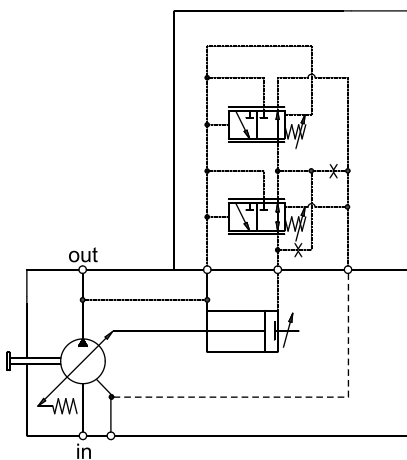
**Pressure control**

The pressure control is used to limit the maximum system pressure. The control acts such that full pump displacement is achieved unless the load pressure reaches the maximum setting of the control. If pump flow is restricted by the system valve, the pump will provide only the flow demanded, but at the maximum pressure setting of the compensator control. If the outlet flow is completely blocked, the pump will de-stroke to zero displacement and maintain the pressure at the setting of the compensator spring.

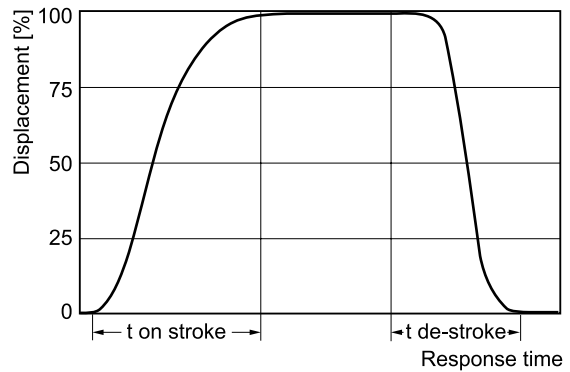
Response times of the pump are collected from a circuit as below by measuring the pumps swash angle movement at different pressures.



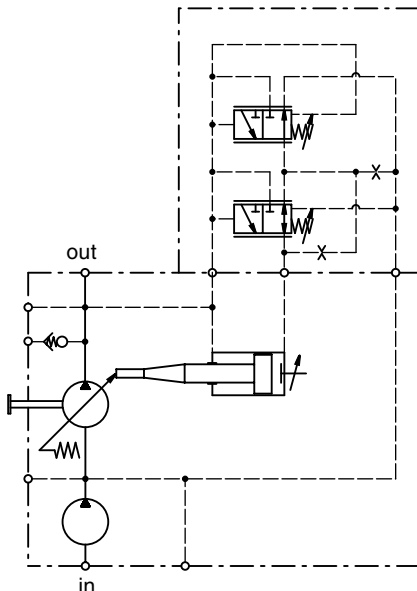
**P2 Control schematics**



**Dynamic characteristic of flow control \***



**P3 Control schematics**



	t on stroke [ms]		t de-stroke [ms]
	against 50 bar	against 220 bar	zero stroke 280 bar
P2060	70	65	30
P2075	70	70	30
P2105 / P3105	120	90	30
P2145 / P3145	160	130	30

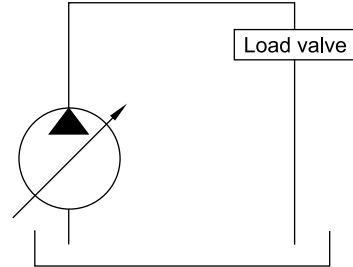
Compensator oil consumption PA control	max. 3.0 l/min
Pressure compensator adjusting range	100 ... 320 bar
Hysteresis and repetitive accuracy	max. 3 bar

\* Curve shown exaggerated

**Remote pressure control**

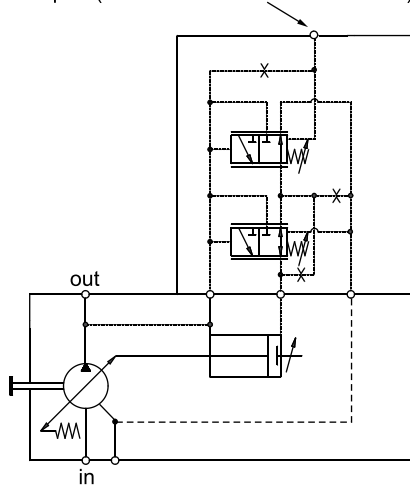
This control allows the pump pressure compensator setting to be adjusted from a remote relief valve. The control acts such that when full pump displacement is achieved the load pressure reaches the maximum setting of the remote relief valve. If pump flow is restricted by the system valve, the pump will provide only the flow demanded, but at the maximum pressure setting of the compensator control. If the outlet flow is completely blocked, the pump will de-stroke to zero displacement and maintain the pressure at the setting of the remote relief valve.

Response times of the pump are collected from a circuit as below by measuring the pumps swash angle movement at different pressures.

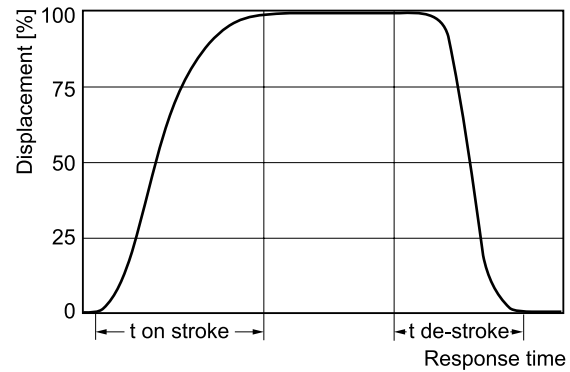


**P2 Control schematics**

X port (connect remote relief valve here)

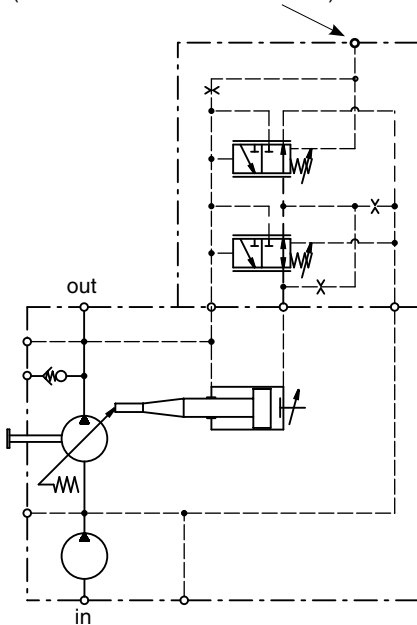


**Dynamic characteristic of flow control \***



**P3 Control schematics**

X port (connect remote relief valve here)



	t on stroke [ms]	t de-stroke [ms]	
	stand by to 250 bar	250 bar to stand by	50 bar to stand by
P2060	60	30	40
P2075	80	35	40
P2105 / P3105	100	40	45
P2145 / P3145	120	45	50

Compensator oil consumption RA control	max. 3.0 l/min
Pilot pressure valve oil consumption	max. 2.0 l/min
Delta P compensator adjusting range	10 ... 35 bar
Pressure compensator adjusting range	100 ... 320 bar
Hysteresis and repetitive accuracy	max. 3 bar

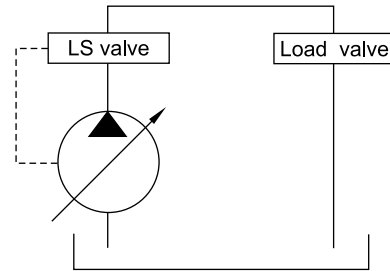
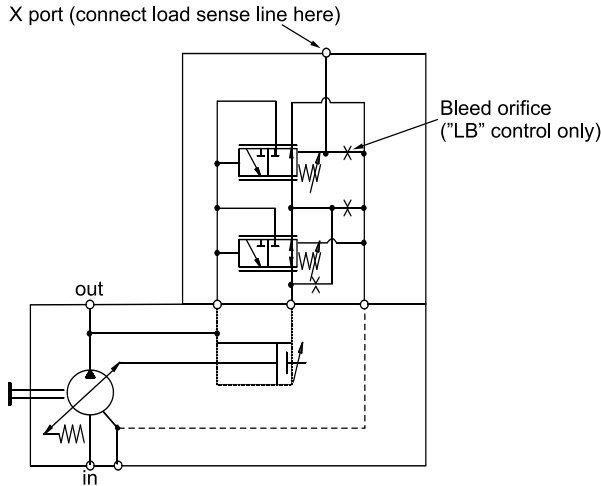
\* Curve shown exaggerated

**Load sensing control with maximum pressure control**

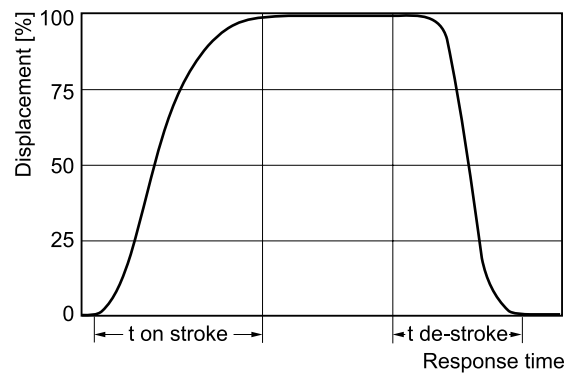
These controls feature load sensing and maximum pressure compensation. Load sense controls are used to match pump flow to system demands.

Response times of the pump are collected from a circuit as below by measuring the pumps swash angle movement at different pressures.

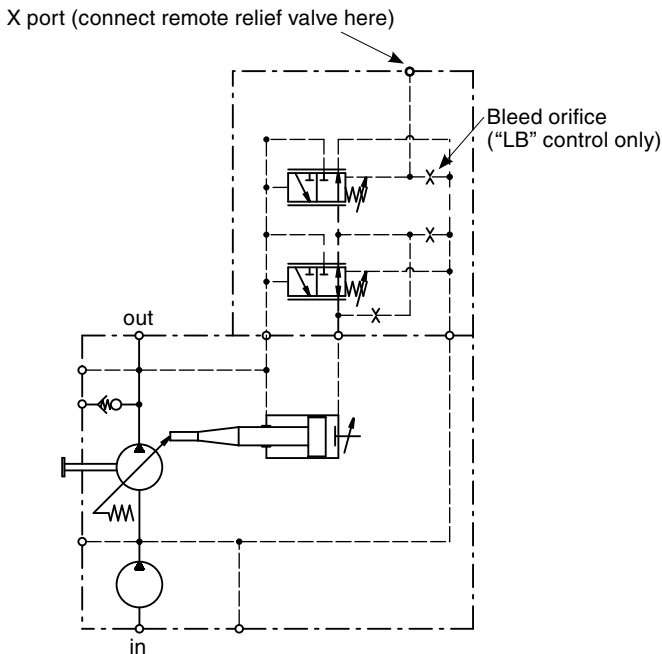
**P2 Control schematics**



**Dynamic characteristic of flow control \***



**P3 Control schematics**

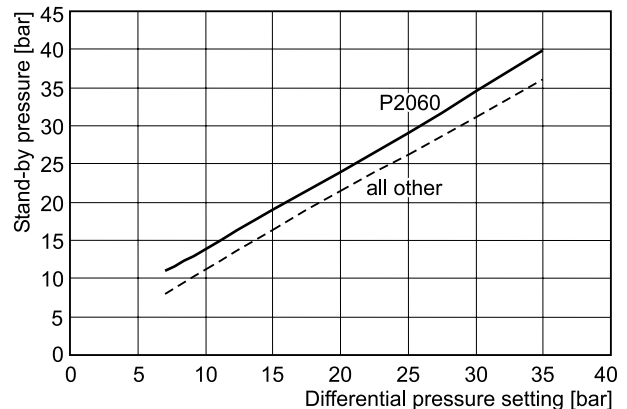


	t on stroke [ms]		t de-stroke [ms]	
	stand by to 250 bar	250 bar to stand by	50 bar to stand by	stand by
P2060	60	30	40	
P2075	80	35	40	
P2105 / P3105	100	40	45	
P2145 / P3145	120	45	50	

Compensator oil consumption LA control	max. 3.0 l/min
Compensator oil consumption LB control	max. 4.5 l/min
Load sensing compensator adjusting range	10 ... 35 bar
Pressure compensator adjusting range	100 ... 320 bar
Hysteresis and repetitive accuracy	max. 3 bar

\* Curve shown exaggerated

**Differential setting vs. stand-by pressure**

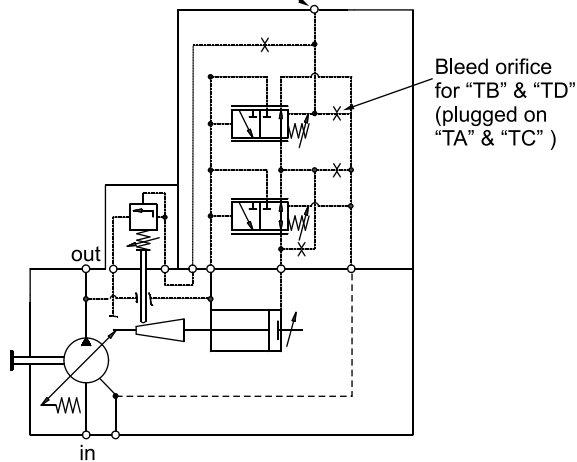


**Torque limiting control with load sensing and maximum pressure control limiter**

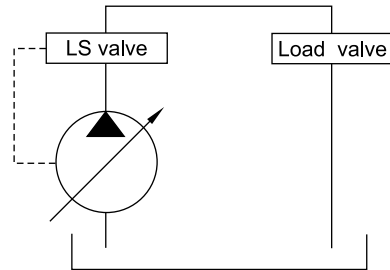
These controls provide the benefits of the load sensing and pressure limiting controls, plus the ability to limit the input torque the pump will draw. These controls are beneficial when the power available from the prime mover for the hydraulics is limited or the application power demand has both high flow/low pressure and low flow/high pressure duty cycles.

**P2 Control schematics**

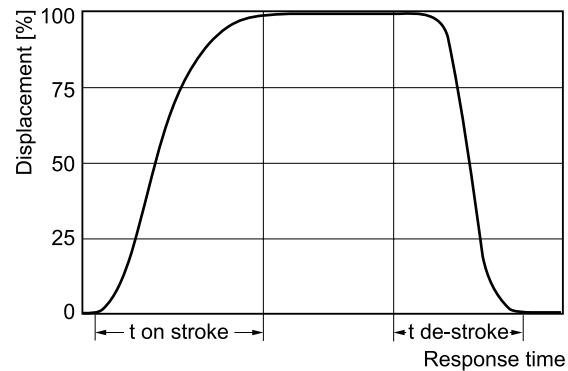
X port (connect load sense line here)



Response times of the pump are collected from a circuit as below by measuring the pumps swash angle movement at different pressures.

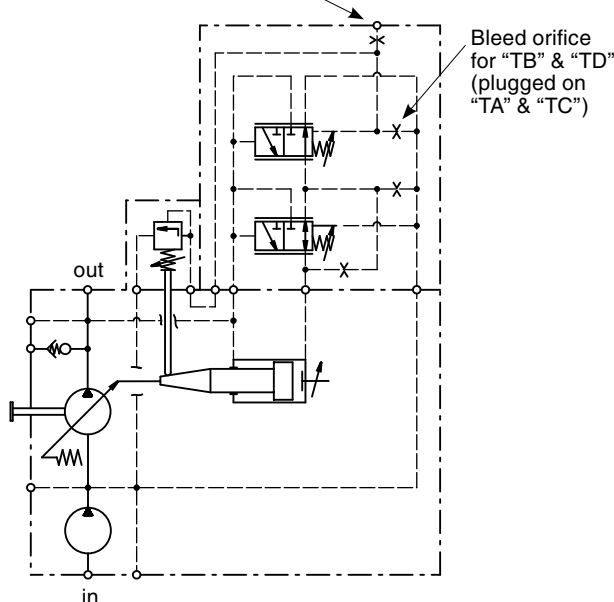


**Dynamic characteristic of flow control \***



**P3 Control schematics**

X port (connect remote relief valve here)

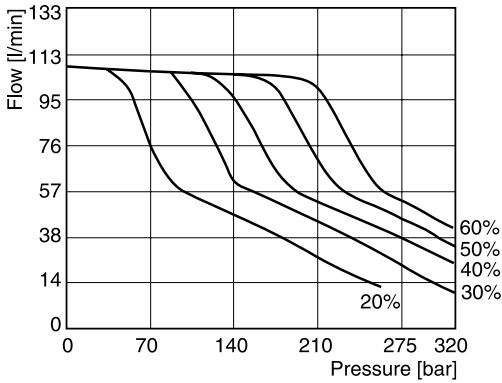


	t on stroke [ms]		t de-stroke [ms]	
	stand by to 250 bar	250 bar to stand by	50 bar to stand by	stand by
P2060	60	30	40	
P2075	80	35	40	
P2105 / P3105	100	40	45	
P2145 / P3145	120	45	50	

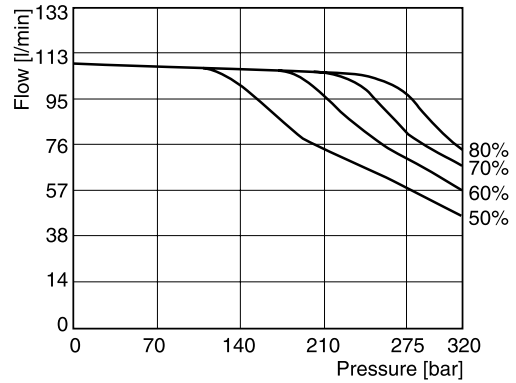
Compensator oil consumption TA, TC control	max. 3.0 l/min
Compensator oil consumption TB, TD control	max. 4.5 l/min
Torque control valve oil consumption	max. 2.0 l/min
Load sensing compensator adjusting range	10 ... 35 bar
Pressure compensator adjusting range	100 ... 320 bar
Hysteresis and repetitive accuracy	max. 3 bar

\* Curve shown exaggerated

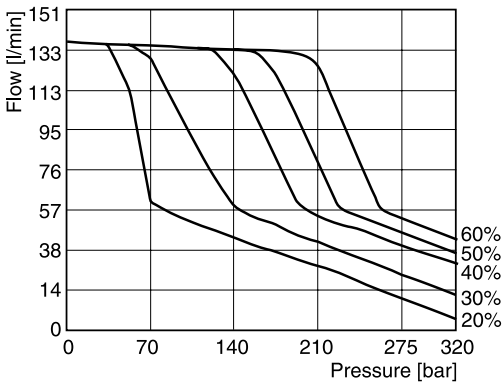
**P2060 - 20...60 % Torque (1800 rpm)**



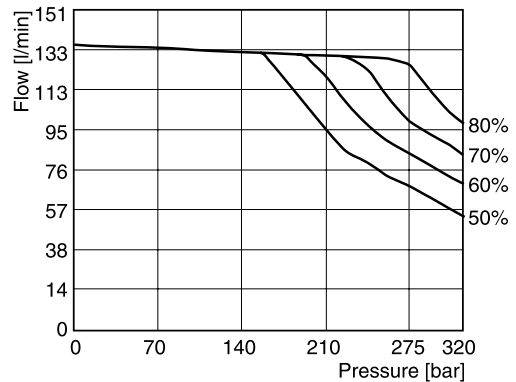
**P2060 - 50...90 % Torque (1800 rpm)**



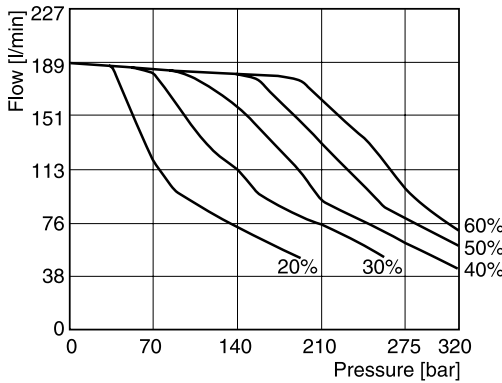
**P2075 - 20...60 % Torque (1800 rpm)**



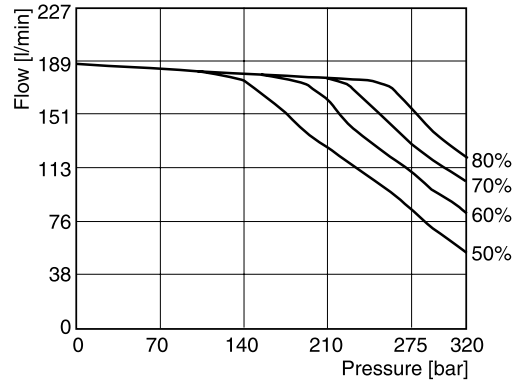
**P2075 - 50...90 % Torque (1800 rpm)**



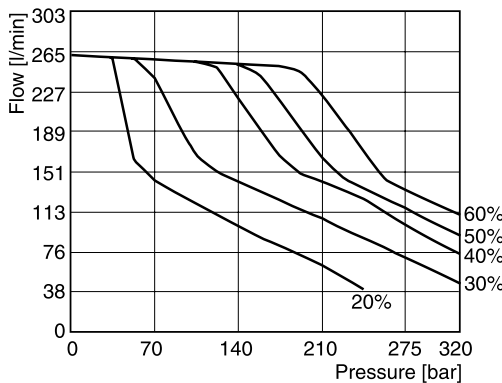
**P2105 - 20...60 % Torque (1800 rpm)**



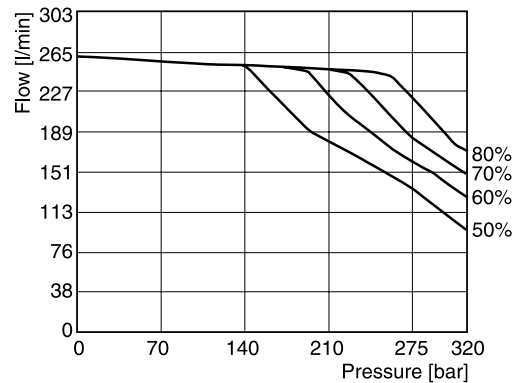
**P2105 - 50...90 % Torque (1800 rpm)**



**P2145 - 20...60 % Torque (1800 rpm)**

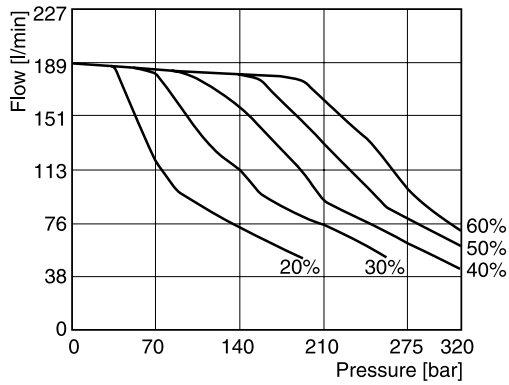


**P2145 - 50...90 % Torque (1800 rpm)**

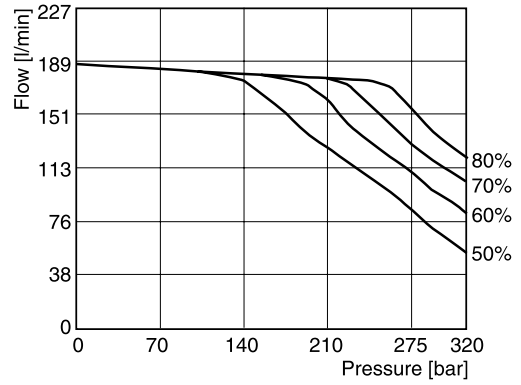


Fluid: Mineral oil ISO VG 32 at 40°C ; Inlet pressure: 1.0 bar (absolute) measured at inlet port.

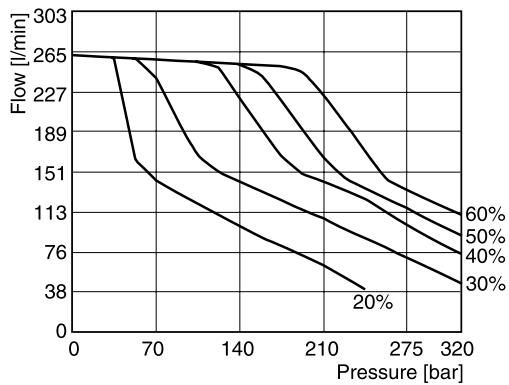
**P3105 - 20...60 % Torque (1800 rpm)**



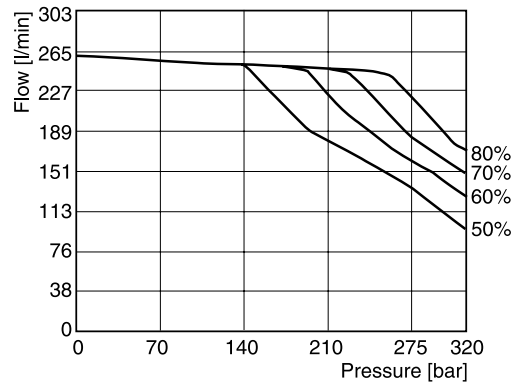
**P3105 - 50...90 % Torque (1800 rpm)**



**P3145 - 20...60 % Torque (1800 rpm)**



**P3145 - 50...90 % Torque (1800 rpm)**



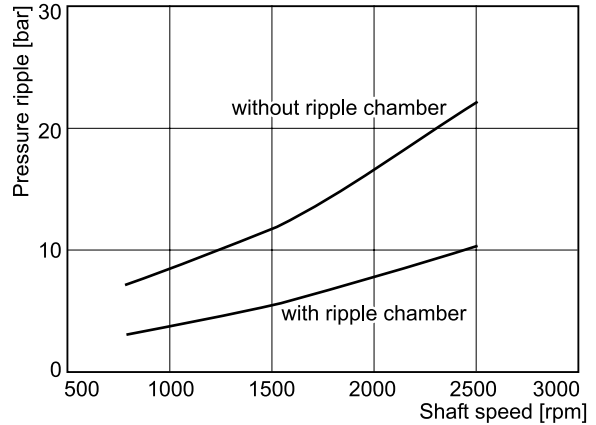
Fluid: Mineral oil ISO VG 32 at 40°C ; Inlet pressure: 1.0 bar (absolute) measured at inlet port.

**Ripple chamber**

**Pressure ripple at 200 bar**

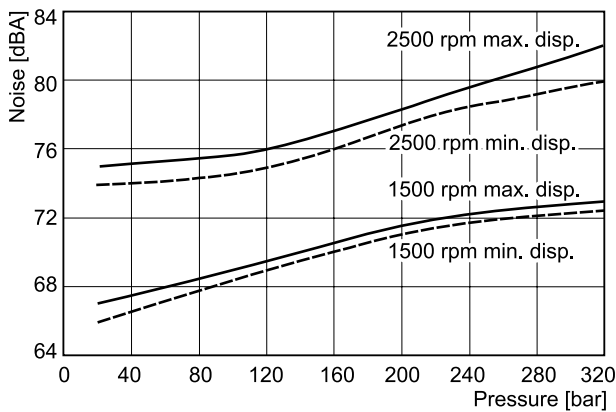
The chart on the right refers to the “Ripple Chamber” technology engineered into the P2 and P3 series pumps. The ripple chamber reduces flow pulsation and due to this pressure pulsation (called “ripple”) at the outlet of the pump. This technology reduces the ripple by 40–60%. This leads to a significant reduction in overall system noise without additional components or cost.

**The ripple chamber is standard on all P2 and P3 series side ported pumps.**

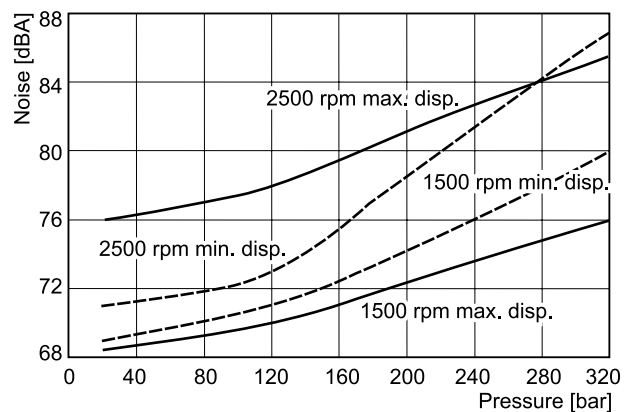


**P2 Noise characteristics at max./min. displacement**

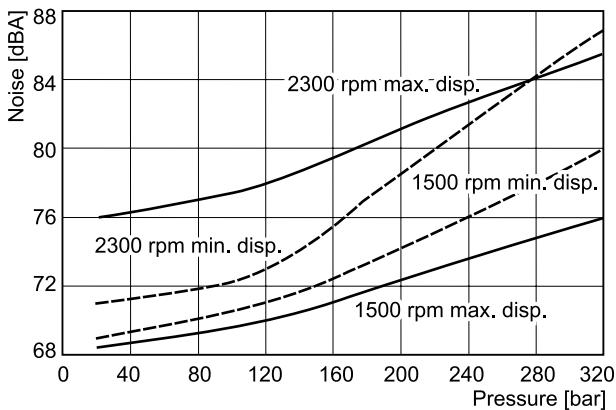
**P2060 Noise characteristics**



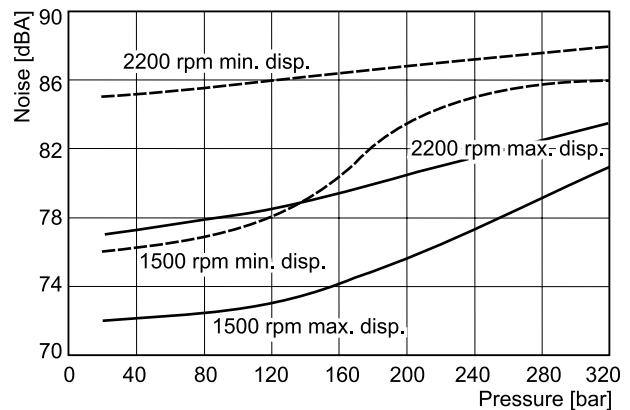
**P2075 Noise characteristics**



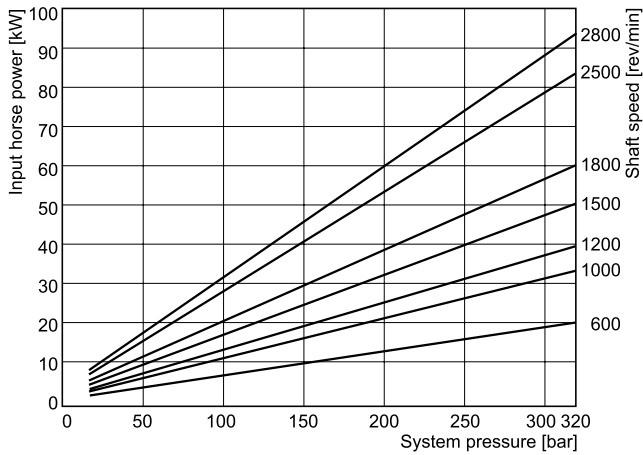
**P2105 Noise characteristics**



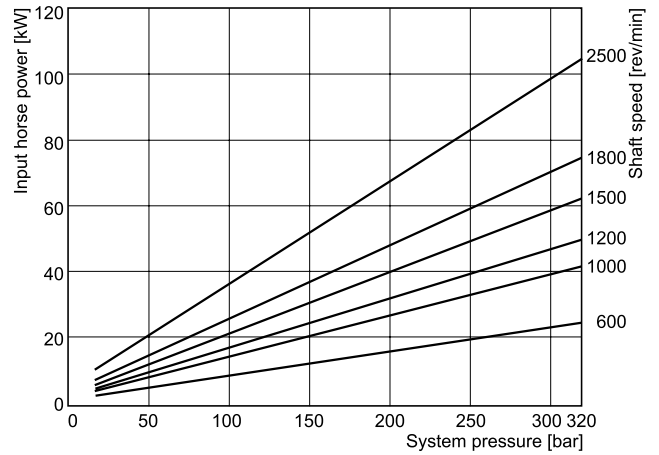
**P2145 Noise characteristics**



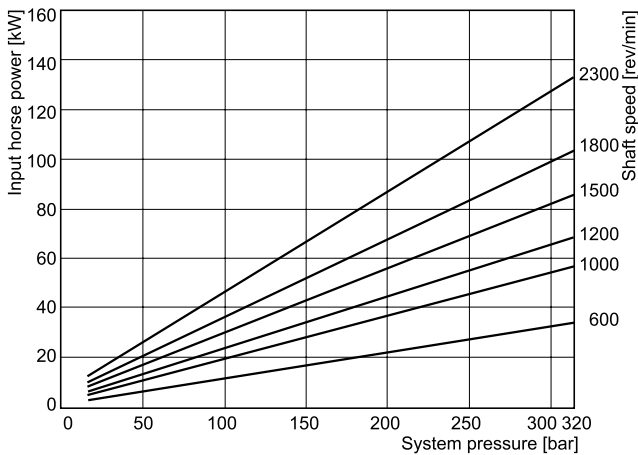
**P2 Series-typical drive power at full displacement  
 P2060 Input power - full stroke**



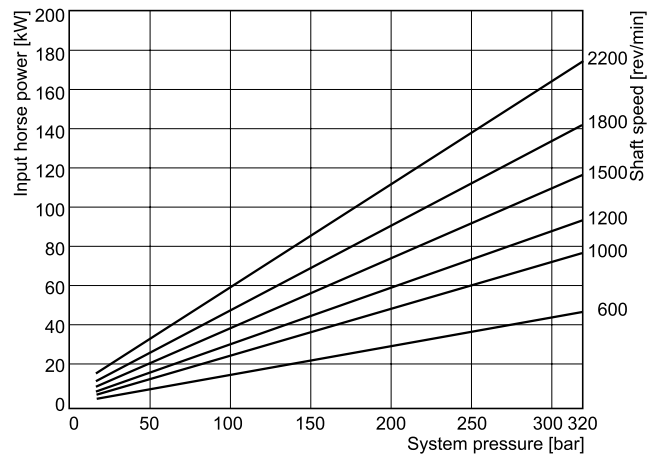
**P2075 Input power - full stroke**



**P2105 Input power - full stroke**

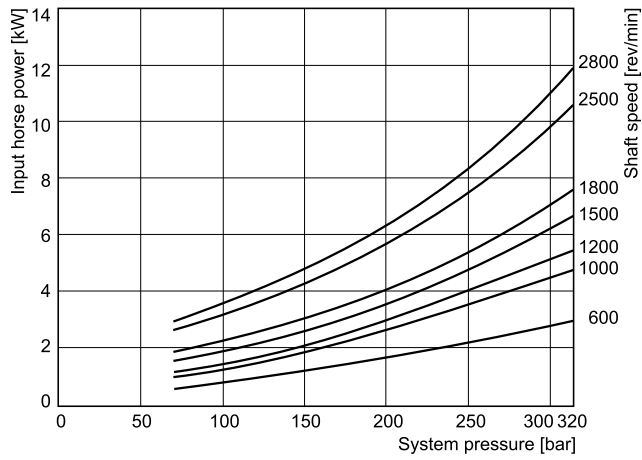


**P2145 Input power - full stroke**

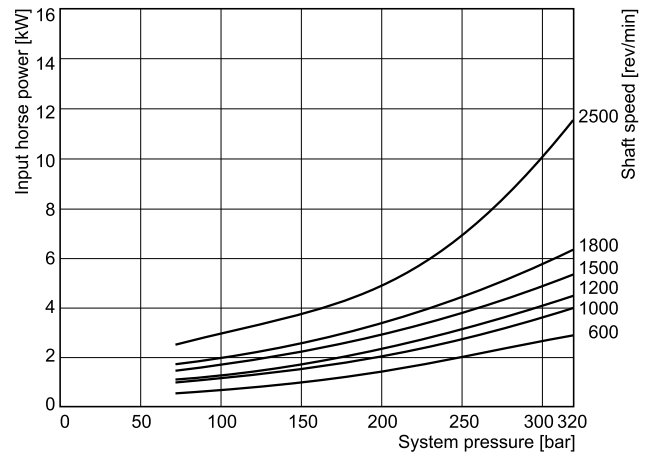


Fluid: Mineral oil ISO VG 32 at 40°C ; Inlet pressure: 1.0 bar (absolute) measured at inlet port.

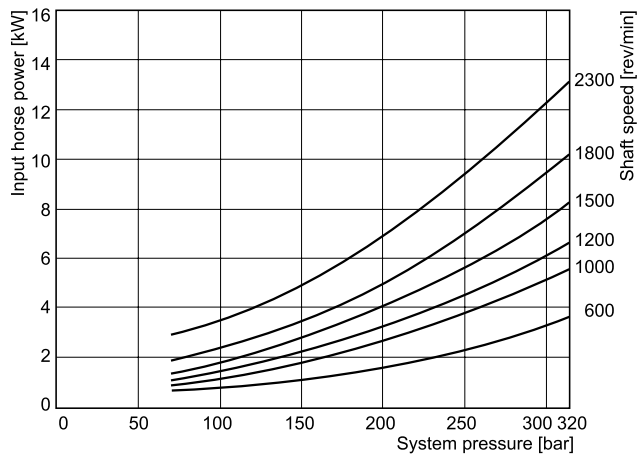
**P2 Series-typical compensated power  
 P2060 Input power - zero stroke**



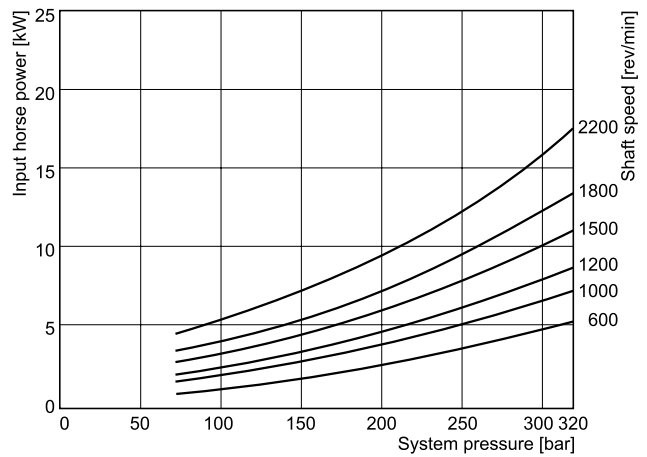
**P2075 Input power - zero stroke**



**P2105 Input power - zero stroke**



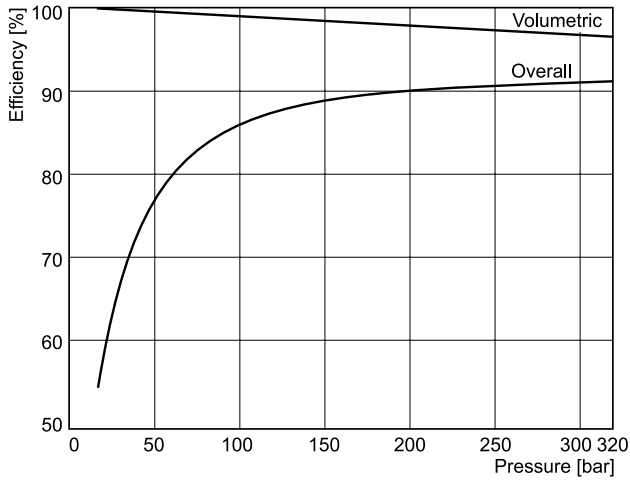
**P2145 Input power - zero stroke**



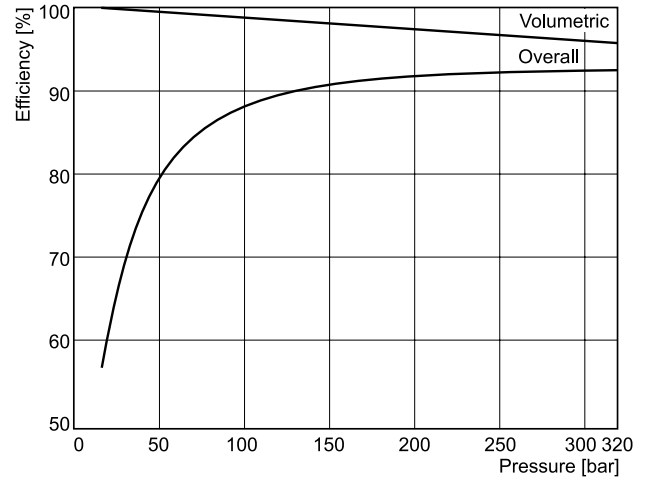
Fluid: Mineral oil ISO VG 32 at 40°C ; Inlet pressure: 1.0 bar (absolute) measured at inlet port.

**P2 Series-typical efficiency at full displacement at 1800 rpm**

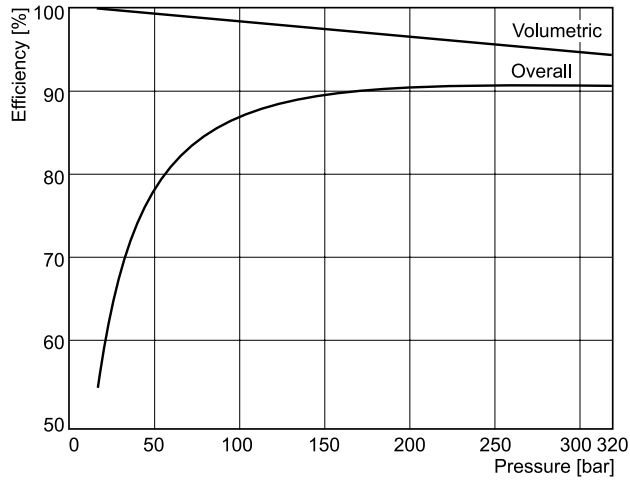
**P2060 Efficiency at 1800 rpm**



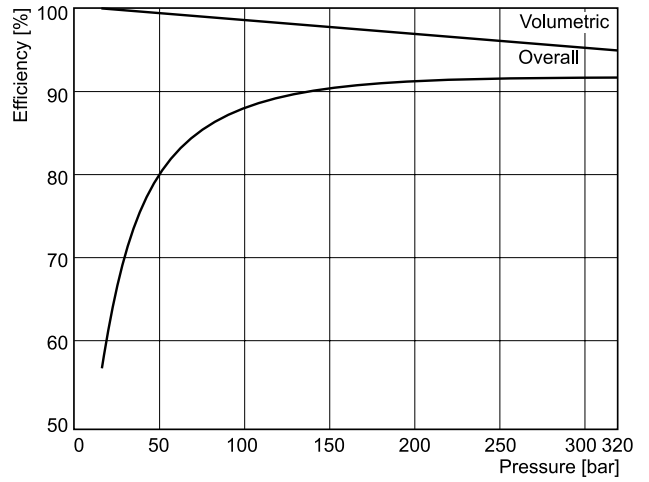
**P2075 Efficiency at 1800 rpm**



**P2105 Efficiency at 1800 rpm**



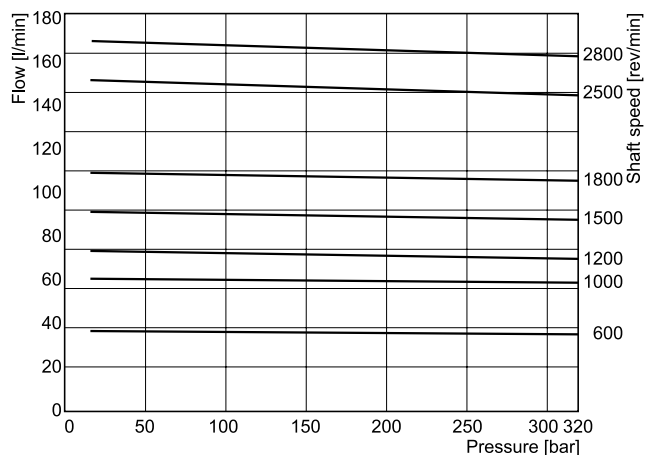
**P2145 Efficiency at 1800 rpm**



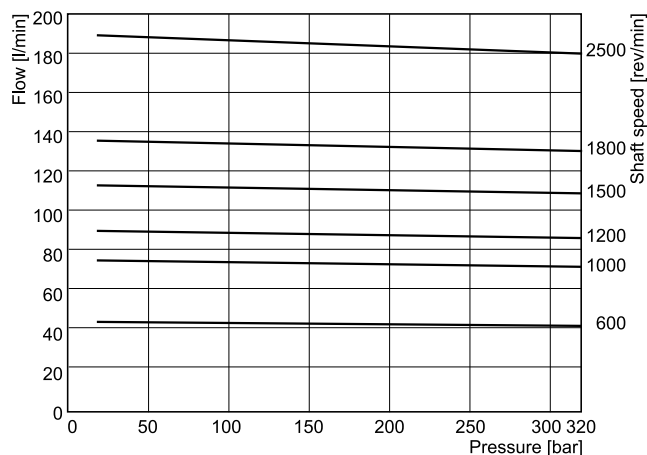
Fluid: Mineral oil ISO VG 32 at 40°C ; Inlet pressure: 1.0 bar (absolute) measured at inlet port.

**P2 Series-typical flow vs. pressure**

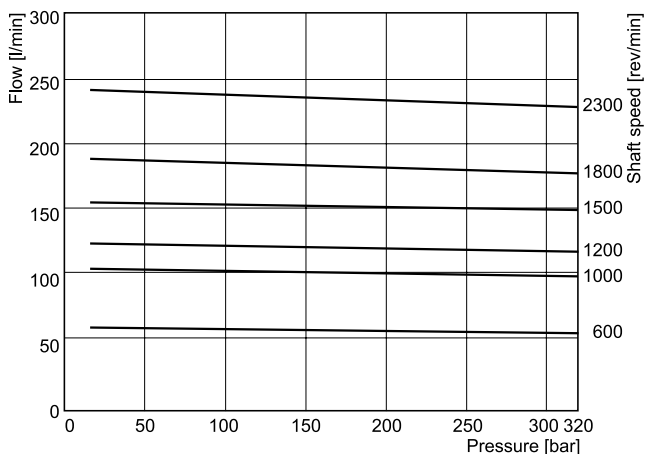
**P2060 Outlet flow - full stroke**



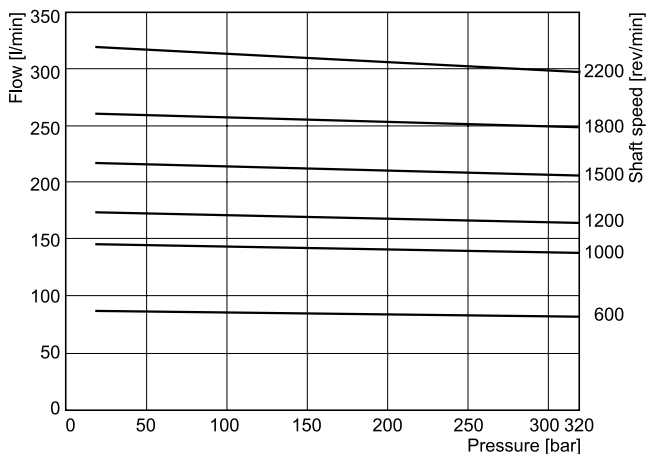
**P2075 Outlet flow - full stroke**



**P2105 Outlet flow - full stroke**



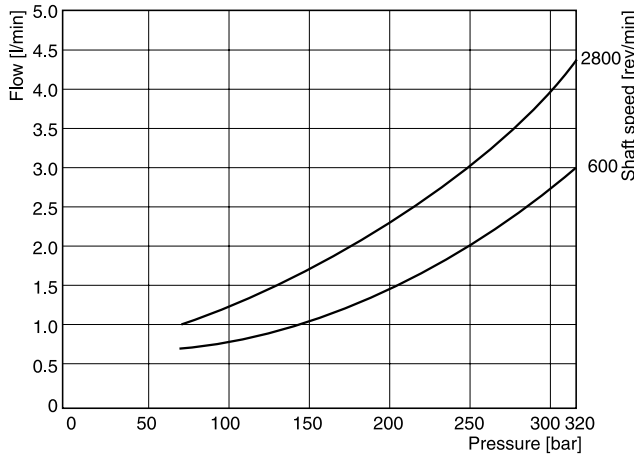
**P2145 Outlet flow - full stroke**



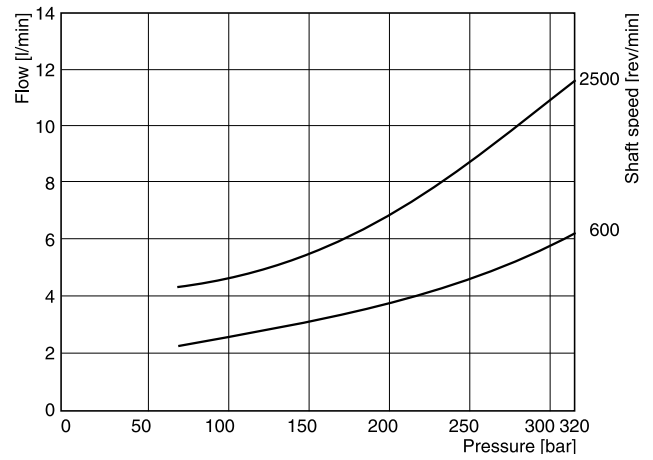
Fluid: Mineral oil ISO VG 32 at 40°C ; Inlet pressure: 1.0 bar (absolute) measured at inlet port.

**P2 Series-typical compensated case drain flow**

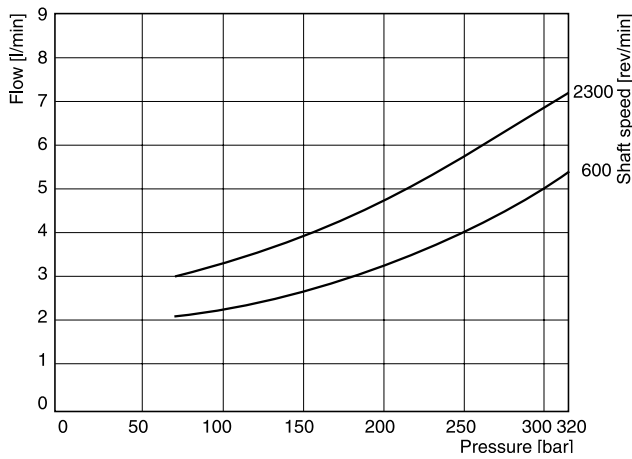
**P2060 Drain flow at zero stroke**



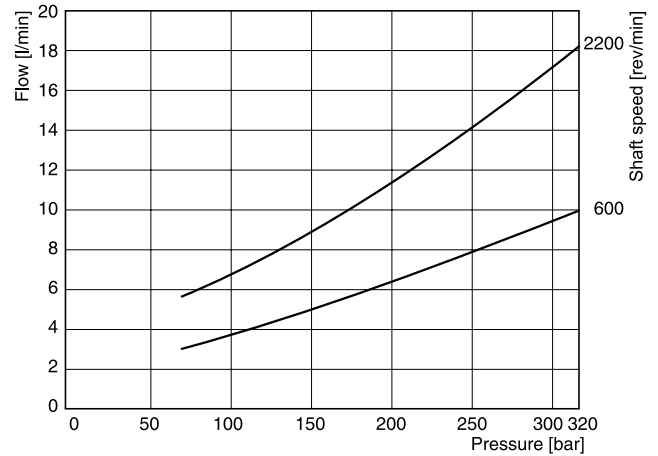
**P2075 Drain flow at zero stroke**



**P2105 Drain flow at zero stroke**



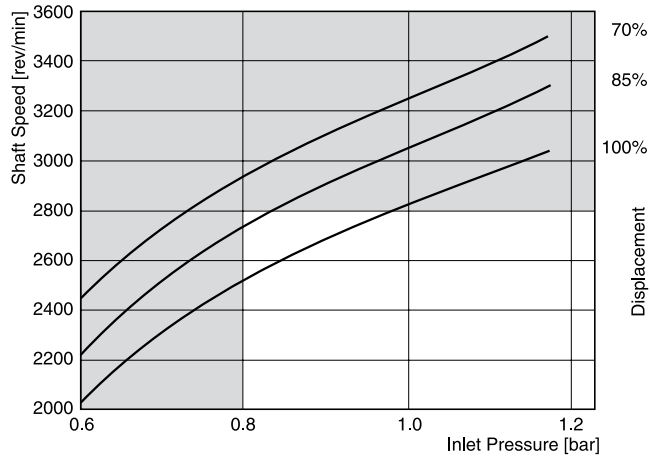
**P2145 Drain flow at zero stroke**



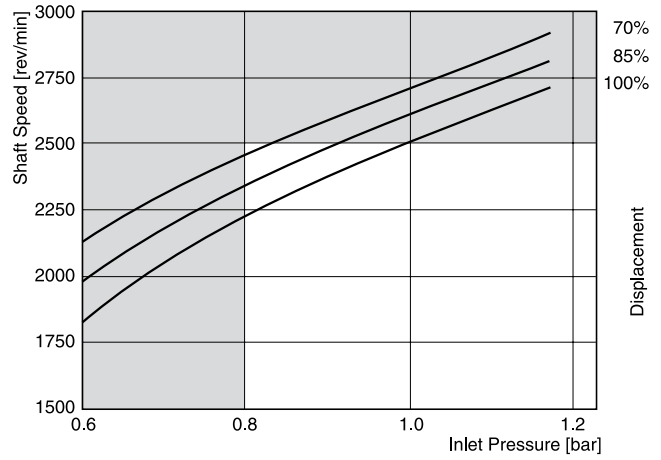
Fluid: Mineral oil ISO VG 32 at 40°C ; Inlet pressure: 1.0 bar (absolute) measured at inlet port.

**P2 Series-typical inlet characteristics vs. speed at various percentage displacements**

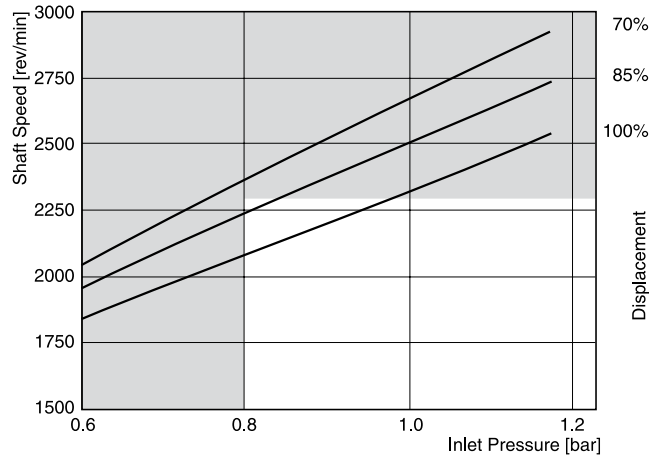
**P2060 Inlet characteristics**



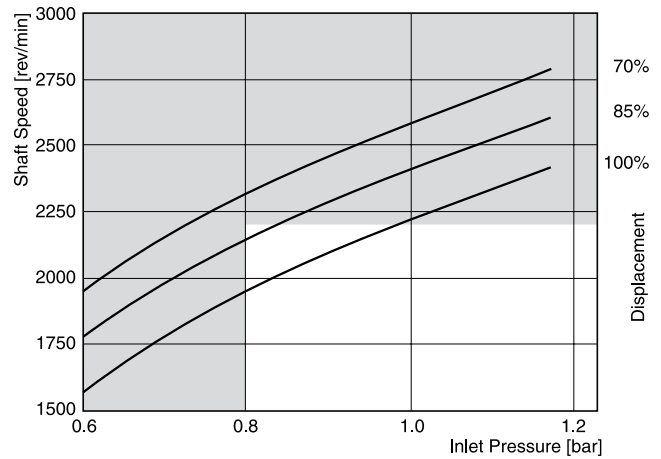
**P2075 Inlet characteristics**



**P2105 Inlet characteristics**



**P2145 Inlet characteristics**



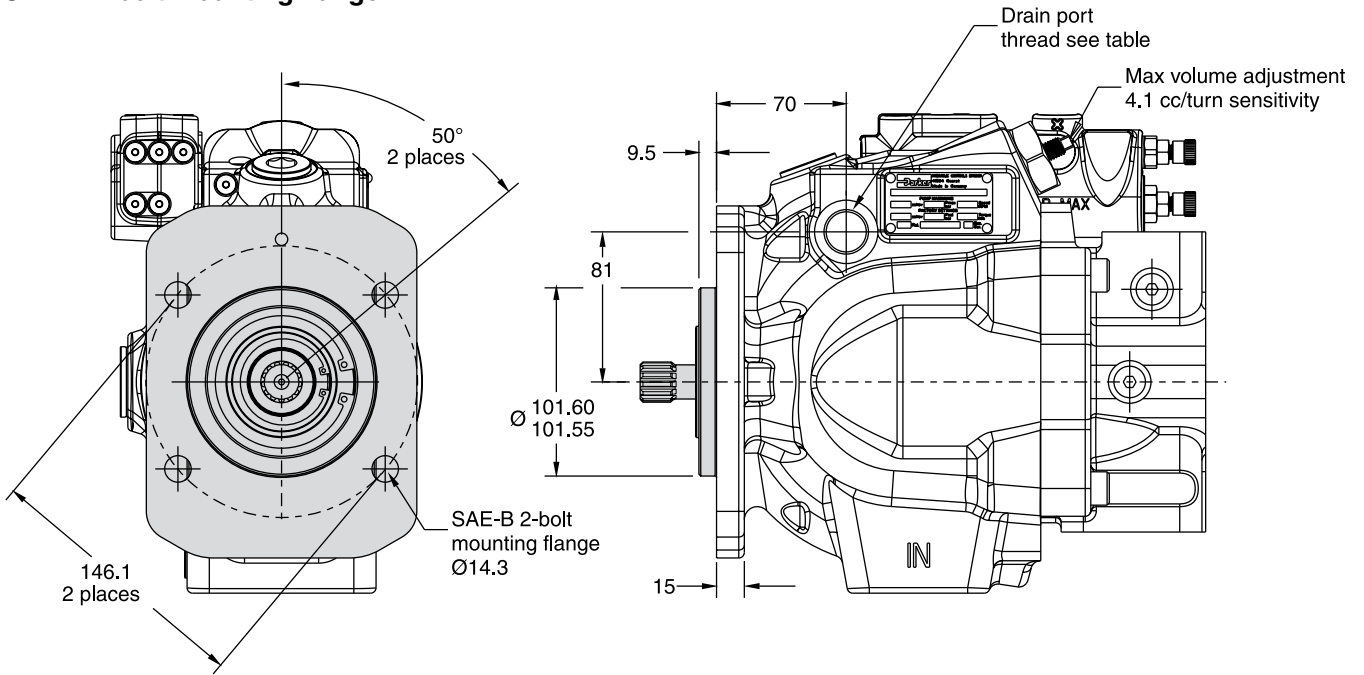
Fluid: Mineral oil ISO VG 32 at 40°C ; Inlet pressure: 1.0 bar (absolute) measured at inlet port.

For operation at these conditions, please consult manufacturer for approval.

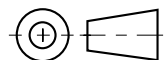
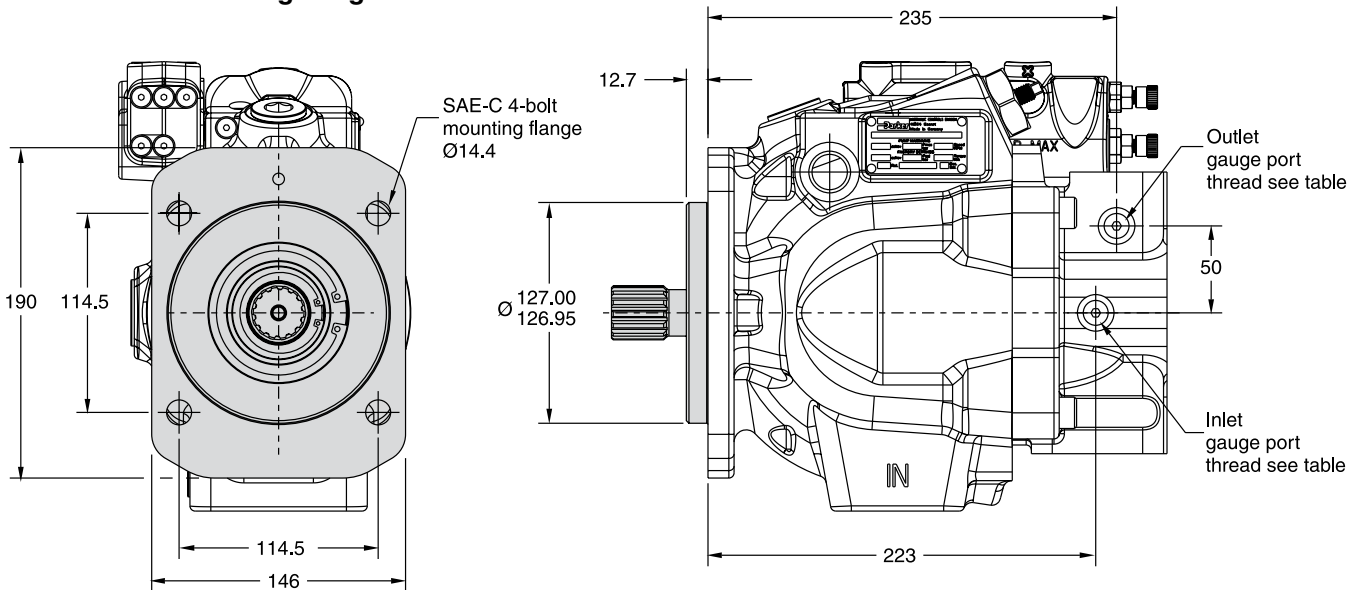
**Dimensions**

**P2060 Mounting flange**

**SAE B 2-bolt mounting flange**



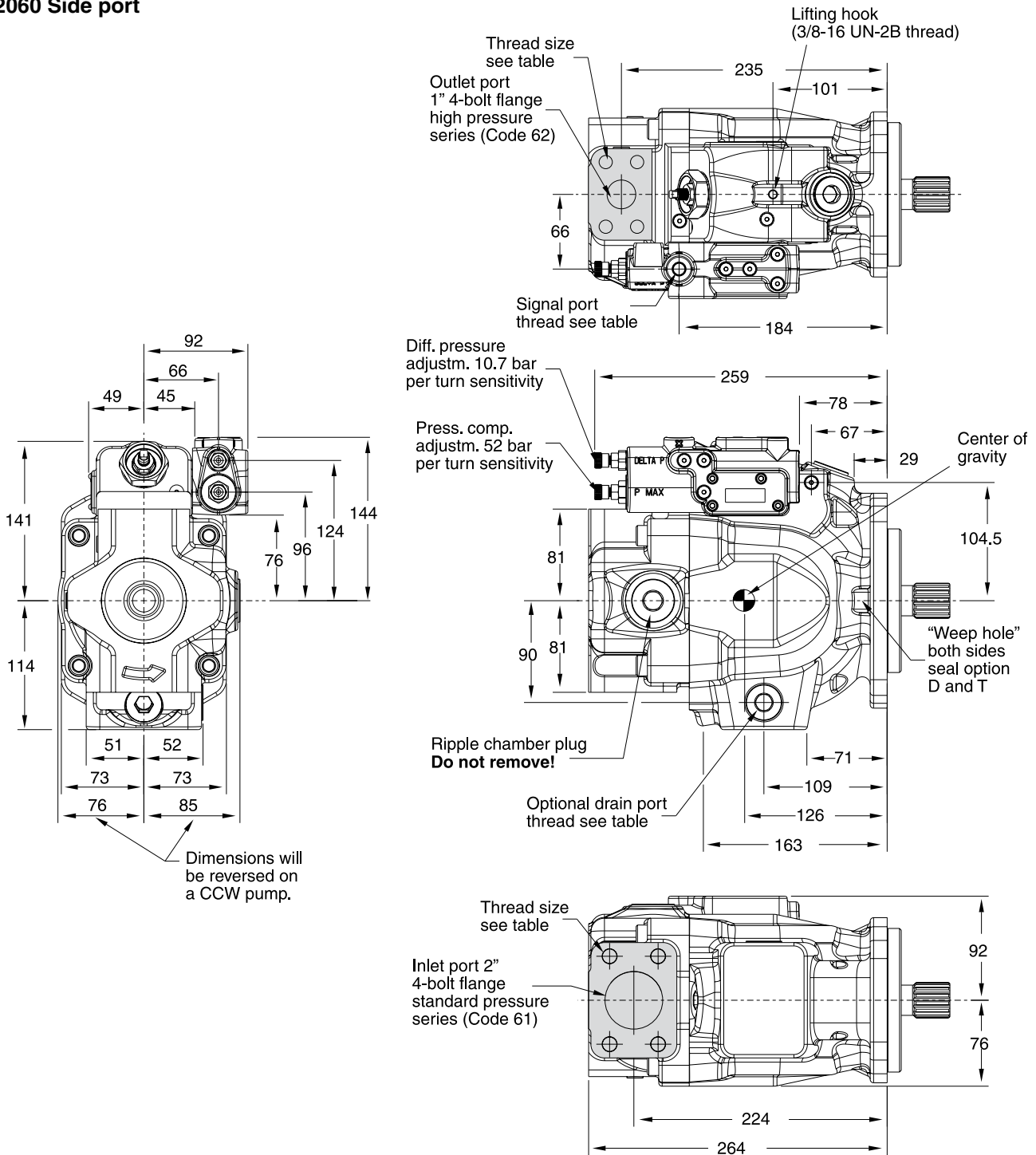
**SAE C 4-bolt mounting flange**



CW pump shown.  
CCW pump will have inlet and outlet gauge ports reversed.

Port ordering code	Drain port	Inlet gauge port / Outlet gauge port / Signal port
"A" side - UNC	SAE-10 straight thread / O-ring port: 7/8-14 UN thread	SAE-4 straight thread / O-ring port: 7/16-20 UN thread
"B" side - metric	ISO 6149 straight thread / O-ring port: M22 x 1.5 thread	ISO 6149 straight thread / O-ring port: M12 x 1.5 thread

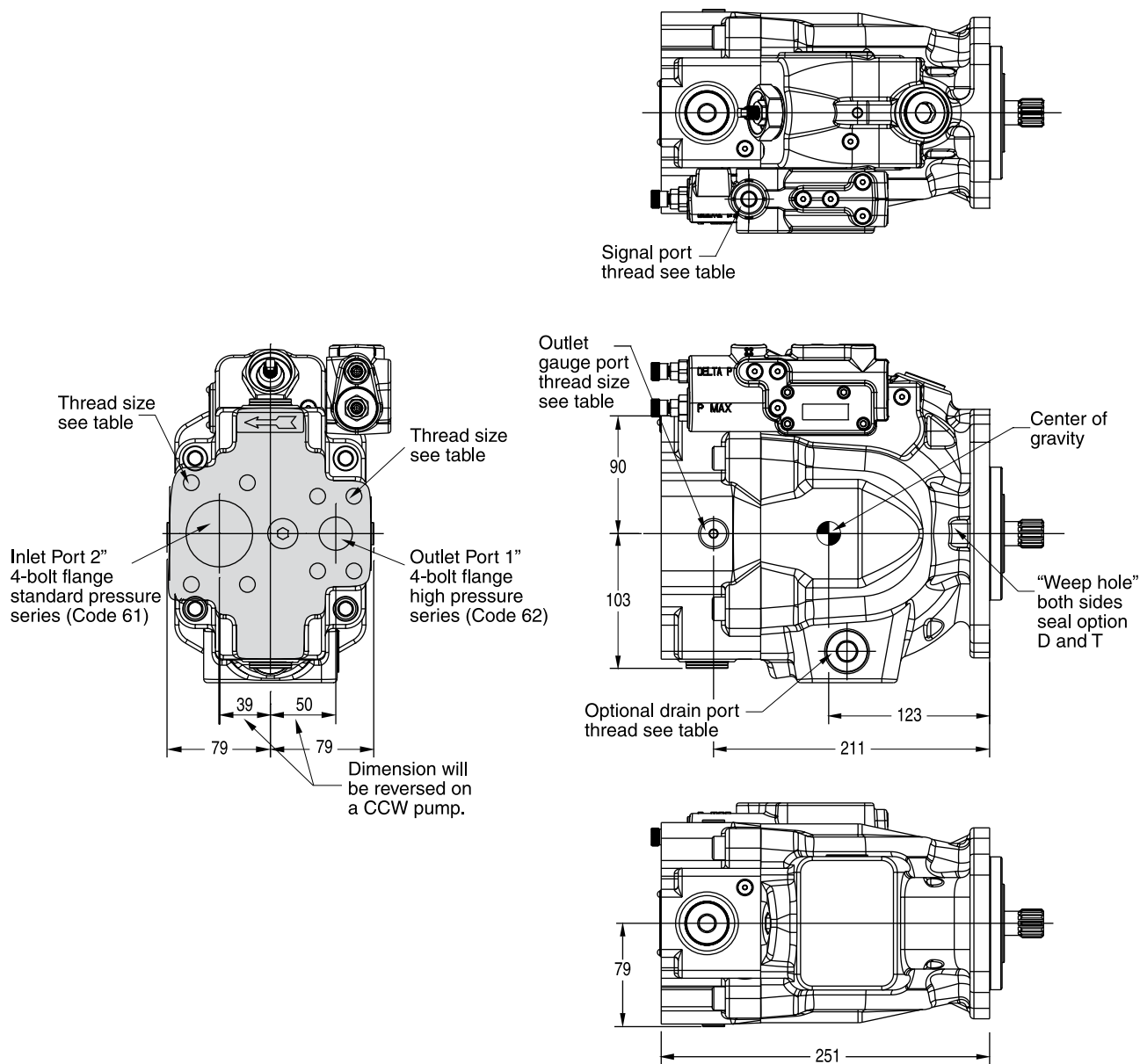
**P2060 Side port**



Pump shown is a CW rotation P2060 series pump with load sense and max. pressure compensator. CCW pump will have inlet and outlet gauge ports reversed.

Port option	Drain port	Inlet port	Outlet port	Inlet gauge port / Outlet gauge port / Signal port
"A" side - UNC	SAE-10 straight thread / O-ring port: 7/8-14 UN thread	1/2-13 UN	7/16-14 UN	SAE-4 straight thread / O-ring port: 7/16-20 UN thread
"B" side - metric	ISO 6149 straight thread / O-ring port: M22 x 1.5 thread	M12 x 1.75	M12 x 1.75	ISO 6149 straight thread / O-ring port: M12 x 1.5 thread

**P2060 Rear port**



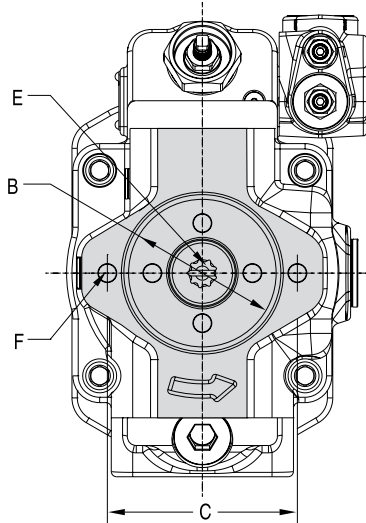
Pump shown is a clockwise rotation P2060 series pump with load sense and max. pressure compensator.  
 CCW pump will have inlet and outlet ports and gauge ports reversed.  
 Does not include ripple chamber.

Port option	Drain port	Inlet port	Outlet port	Inlet gauge port / Outlet gauge port / Signal port
"G" rear - UNC	SAE-10 straight thread / O-ring port: 7/8-14 UN thread	1/2-13 UN	7/16-14 UN	SAE-4 straight thread / O-ring port: 7/16-20 UN thread
"H" rear - metric	ISO 6149 straight thread / O-ring port: M22 x 1.5 thread	M12 x 1.75	M12 x 1.75	ISO 6149 straight thread / O-ring port: M12 x 1.5 thread

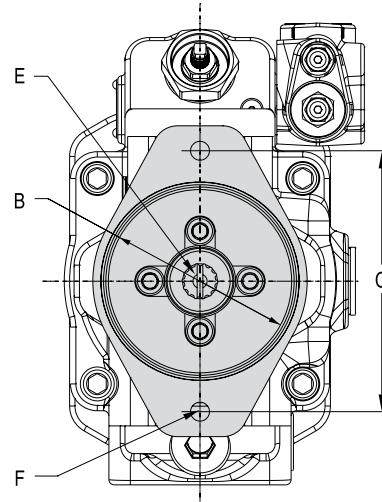
PI P2-P3 UK.PM6.5 RH



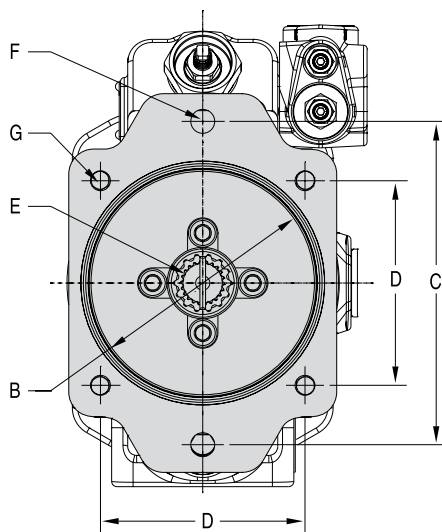
**P2060 Thru-Shaft Option**  
**A1 configuration**



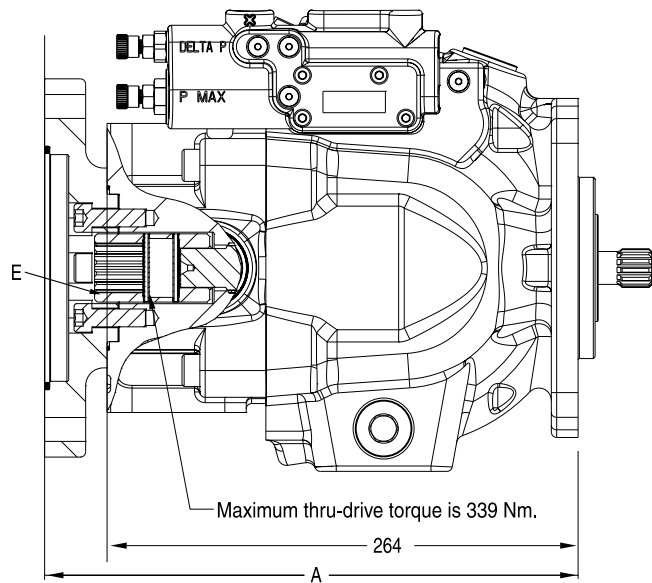
**B1 and B2 configurations**



**C1 and C3 configurations**

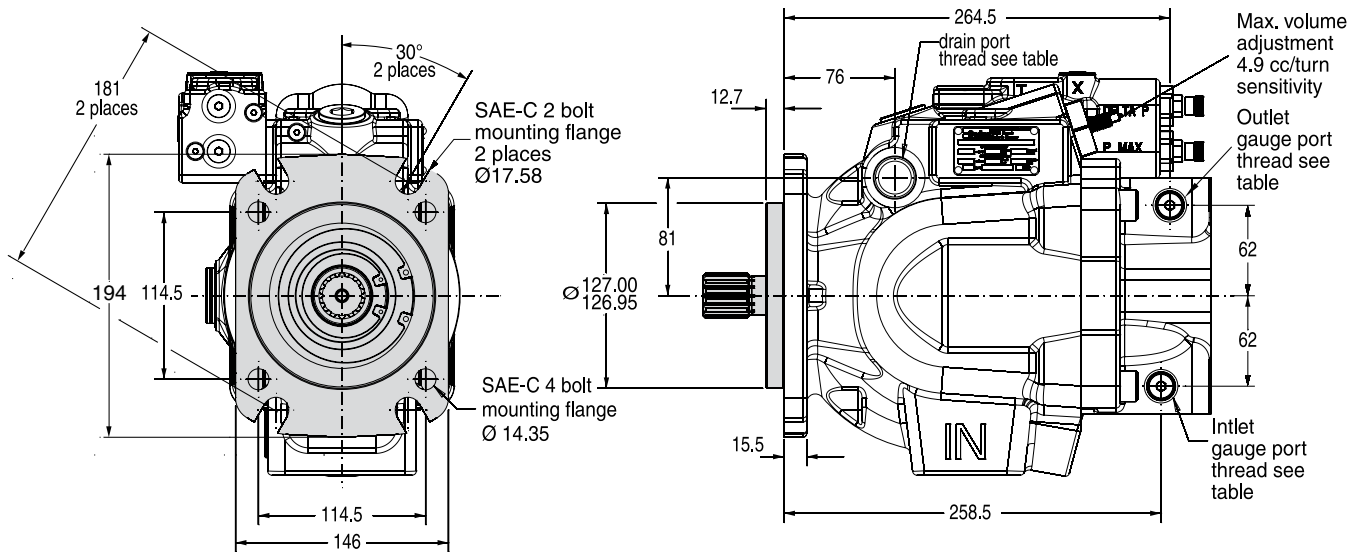


**P2060 partial cut-away of thru-drive area**

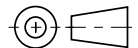


Thru-shaft option	A	B Ø	C	D	E	F UNC	F metric	G UNC	G metric	Pump weight
<b>A1</b>	264	82.625 82.575	106.38	N/A	SAE-A spline 9 tooth 16/32 pitch	3/8-16 UNC-2B THD	M10 x 1.5 THD	N/A	N/A	36.2 kg
<b>B1</b>	297	101.676 101.625	146.05	N/A	SAE-B spline 13 tooth 16/32 pitch	1/2-13 UNC-2B THD	M12 x 1.75 THD	N/A	N/A	38.9 kg
<b>B2</b>	297	101.676 101.625	146.05	N/A	SAE-BB spline 15 tooth 16/32 pitch	1/2-13 UNC-2B THD	M12 x 1.75 THD	N/A	N/A	38.9 kg
<b>C1 C3</b>	299	127.076 127.025	180.98	114.5	SAE-C spline 14 tooth 12/24 pitch	5/8-11 UNC-2B THD	M16 x 2 THD	1/2-13 UNC-2B THD	M12 x 1.75 THD	40.2 kg

**P2075 Mounting flange**

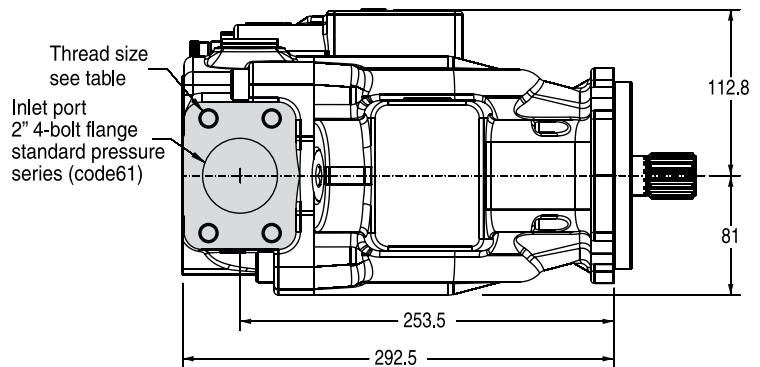
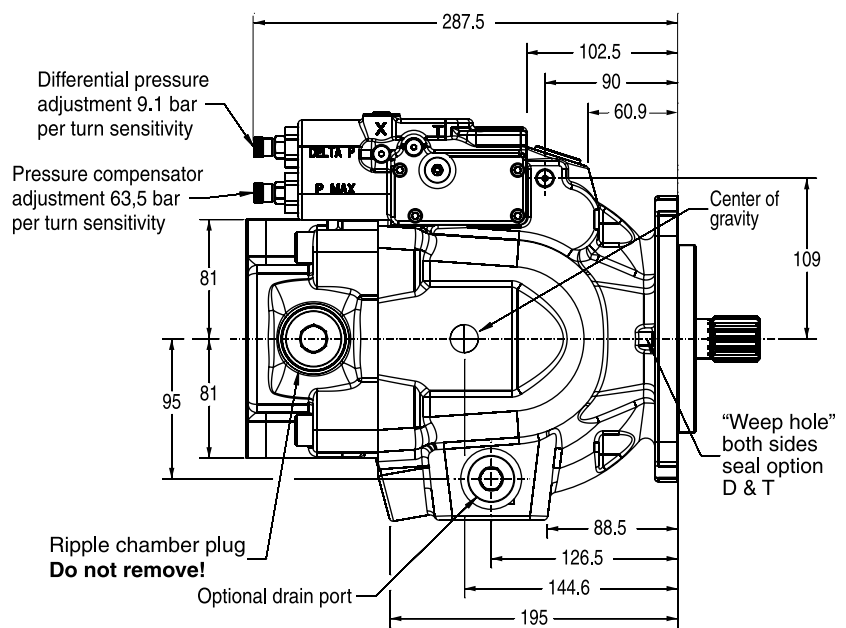
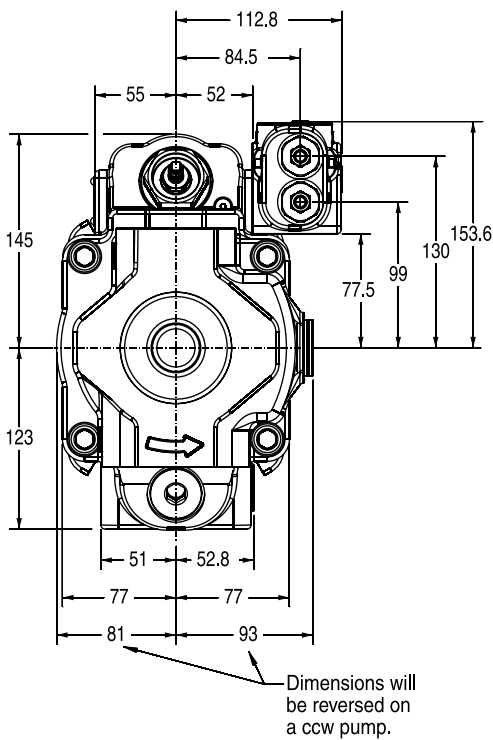
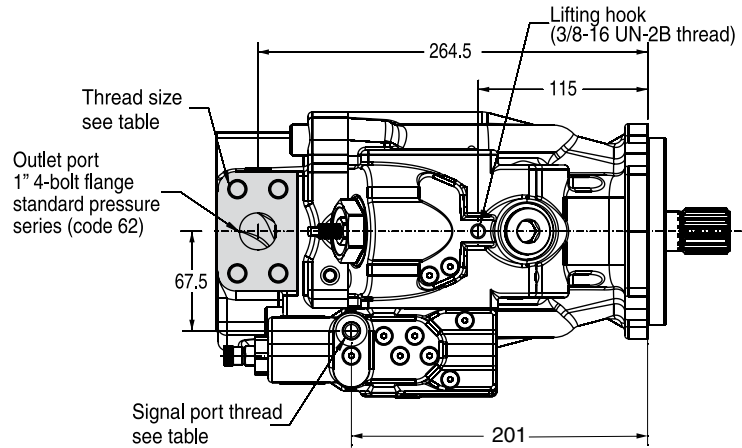


CW pump shown.  
 CCW pump will have inlet and outlet gauge ports reversed.

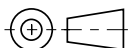


Port ordering code	Drain port	Inlet gauge port / Outlet gauge port
"A" side - UNC	SAE-12 straight thread / O-ring port: 1-1/16-12 UN thread	SAE-4 straight thread / O-ring port: 7/16-20 UN thread
"B" side - metric	ISO 6149 straight thread / O-ring port: M27 x 2 thread	ISO 6149 straight thread / O-ring port: M12 x 1.5 thread

**P2075 Side port**

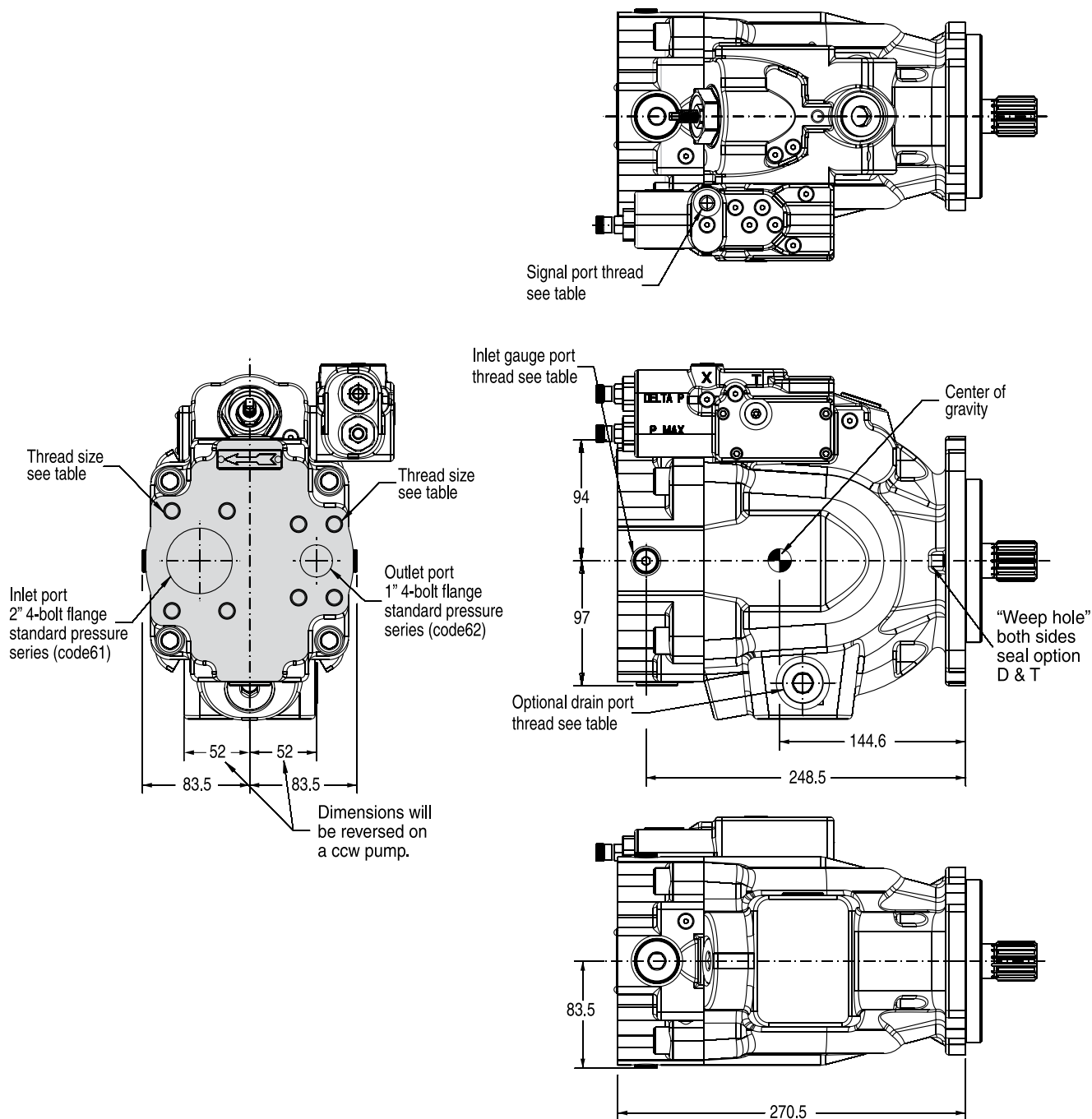


CW pump shown.  
 CCW pump will have inlet and outlet gauge ports reversed.

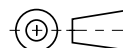


Port option	Drain port	Inlet port	Outlet port	Inlet gauge port / Outlet gauge port / Signal port
"A" side - UNC	SAE-12 straight thread / O-ring port: 1-1/16-12 thread	1/2-13 UN	7/16-14 UN	SAE-4 straight thread / O-ring port: 7/16-20 UN thread
"B" side - metric	ISO 6149 straight thread / O-ring port: M27 x 2 thread	M12 x 1.75	M12 x 1.75	ISO 6149 straight thread / O-ring port: M12 x 1.5 thread

**P2075 Rear port**



Pump shown is a clockwise rotation P2075 series pump with load sense and max. pressure compensator.  
 CCW pump will have inlet and outlet ports and gauge ports reversed.  
 Does not include ripple chamber.

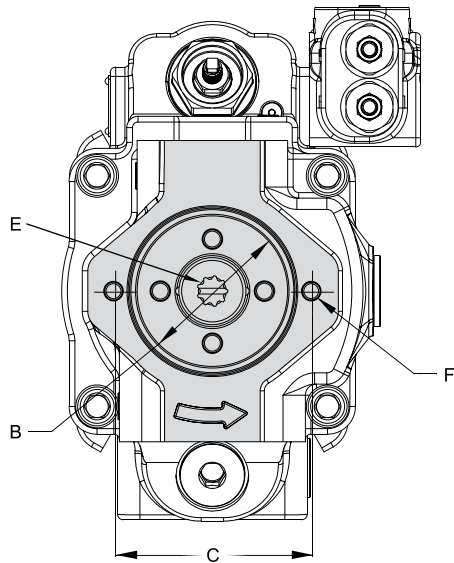


Port option	Drain port	Inlet port	Outlet port	Inlet gauge port / Outlet gauge port / Signal port
"G" rear - UNC	SAE-12 straight thread / O-ring port: 1-1/16-12 thread	1/2-13 UN	7/16-14 UN	SAE-4 straight thread / O-ring port: 7/16-20 UN thread
"H" rear - metric	ISO 6149 straight thread / O-ring port: M27 x 2 thread	M12 x 1.75	M12 x 1.75	ISO 6149 straight thread / O-ring port: M12 x 1.5 thread

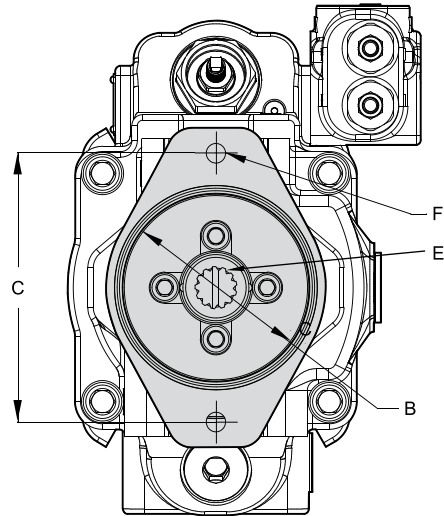
PI P2-P3 UK.PM6.5 RH



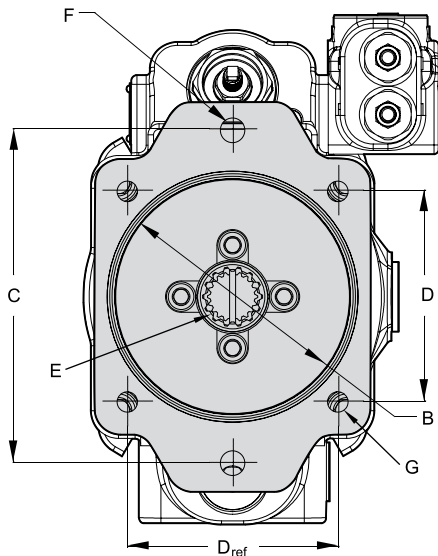
**P2075 Thru-shaft option  
 A1 configuration**



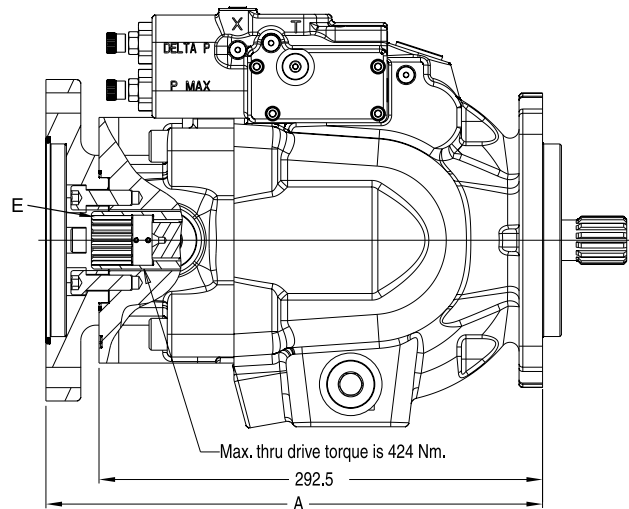
**B1 and B2 configurations**



**C1 and C3 configurations**



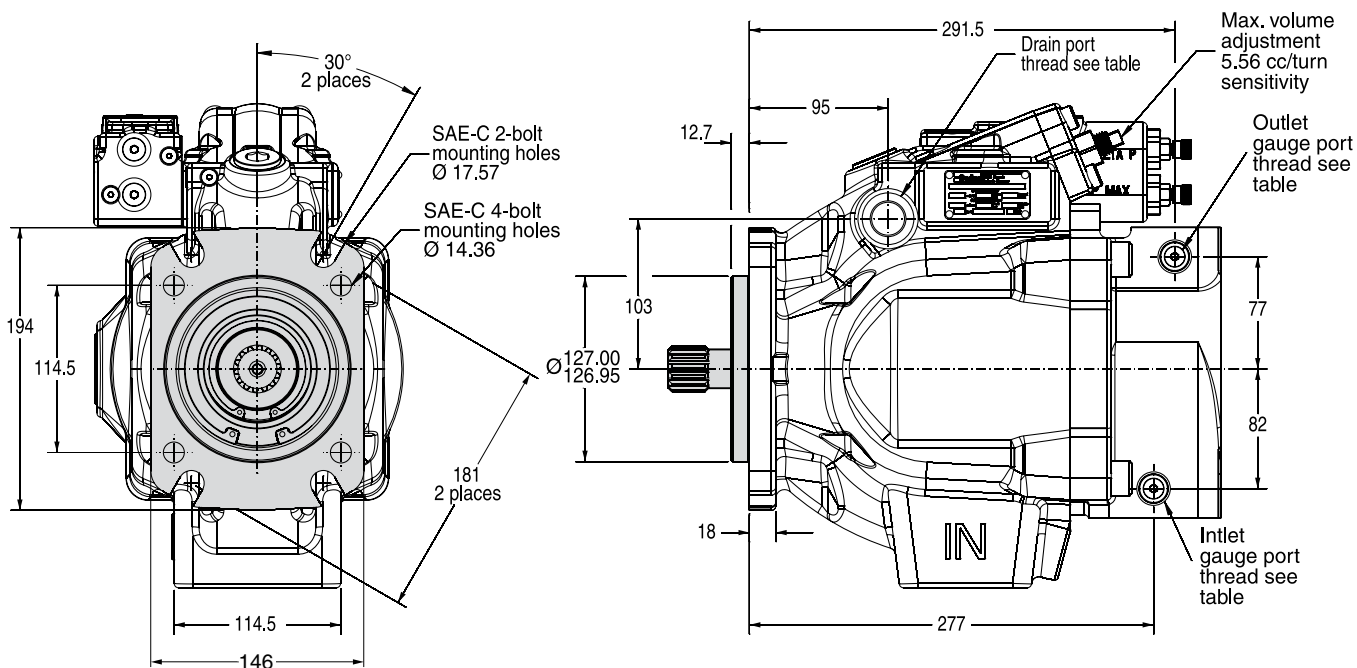
**P2075 partial cut-away of thru-drive area**



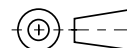
Pumps will be assembled with flange adapters as shown. Options B1, B2, C1 and C3 can be rotated 90°.

Thru-shaft option	A	B Ø	C	D	E	F UNC	F metric	G UNC	G metric	Pump weight
<b>A1</b>	292.5	82.625 82.575	106.38	N/A	SAE-A spline 9 tooth 16/32 pitch	3/8-16 UNC-2B THD	M10 x 1.5 THD	N/A	N/A	44 kg
<b>B1</b>	325.5	101.676 101.625	146.05	N/A	SAE-B spline 13 tooth 16/32 pitch	1/2-13 UNC-2B THD	M12 x 1.75 THD	N/A	N/A	46.5 kg
<b>B2</b>	325.5	101.676 101.625	146.05	N/A	SAE-BB spline 15 tooth 16/32 pitch	1/2-13 UNC-2B THD	M12 x 1.75 THD	N/A	N/A	46.5 kg
<b>C1 C3</b>	327.5	127.076 127.025	180.98	114.5	SAE-C spline 14 tooth 12/24 pitch	5/8-11 UNC-2B THD	M16 x 2 THD	1/2-13 UNC-2B THD	M12 x 1.75 THD	48 kg

**P2105 Mounting flange**

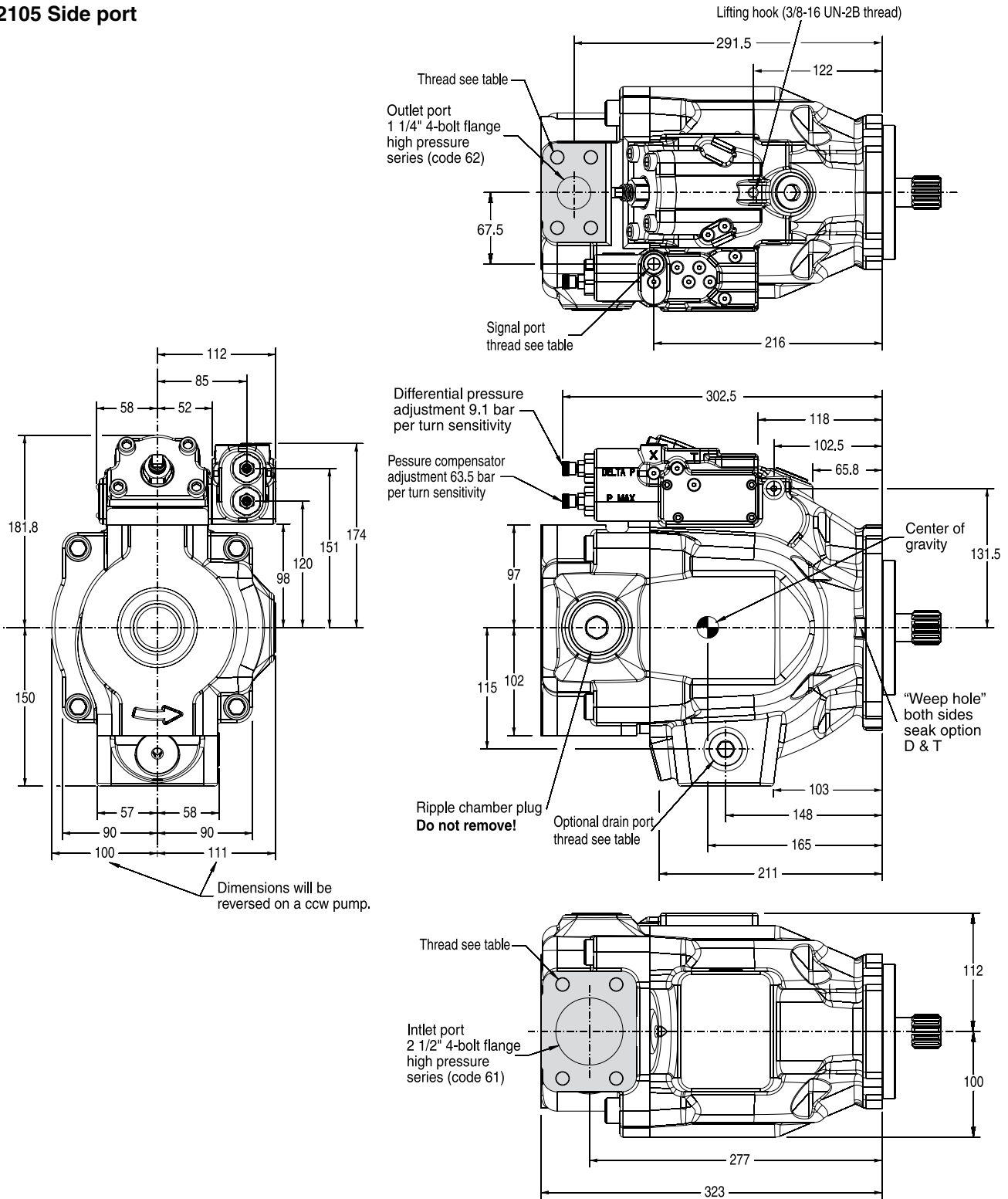


CW pump shown.  
 CCW pump will have inlet and outlet gauge ports reversed.

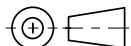


Port ordering code	Drain port	Inlet gauge port / Outlet gauge port
"A" side - UNC	SAE-12 straight thread / O-ring port: 1-1/16-12 UN thread	SAE-4 straight thread / O-ring port: 7/16-20 UN thread
"B" side - metric	ISO 6149 straight thread / O-ring port: M27 x 2 thread	ISO 6149 straight thread / O-ring port: M12 x 1.5 thread

**P2105 Side port**

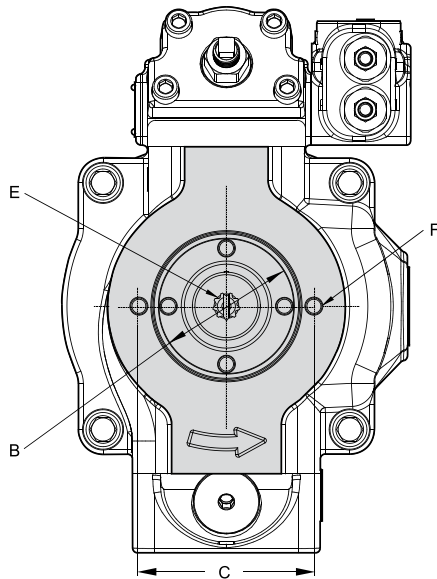


CW pump shown.  
 CCW pump will have inlet and outlet gauge ports reversed.

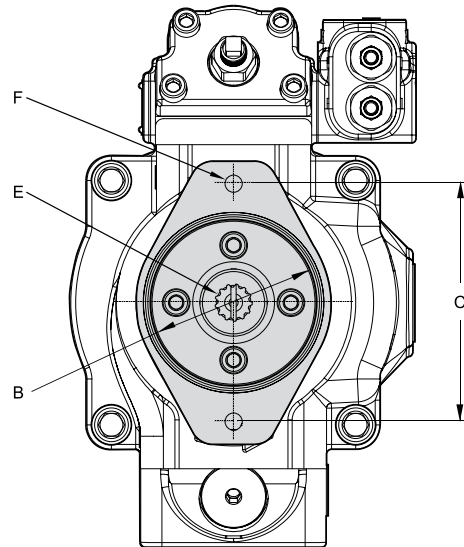


Port option	Drain port	Inlet port	Outlet port	Inlet gauge port / Outlet gauge port / Signal port
"A" side - UNC	SAE-12 straight thread / O-ring port: 1-1/16-12 thread	1/2-13 UN	1/2-13 UN	SAE-4 straight thread / O-ring port: 7/16-20 UN thread
"B" side - metric	ISO 6149 straight thread / O-ring port: M27 x 2 thread	M12 x 1.75	M12 x 1.75	ISO 6149 straight thread / O-ring port: M12 x 1.5 thread

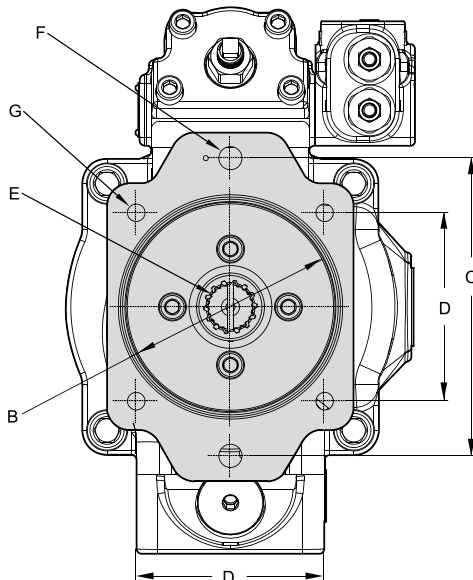
**P2105 Thru-shaft option**  
**A1 configuration**



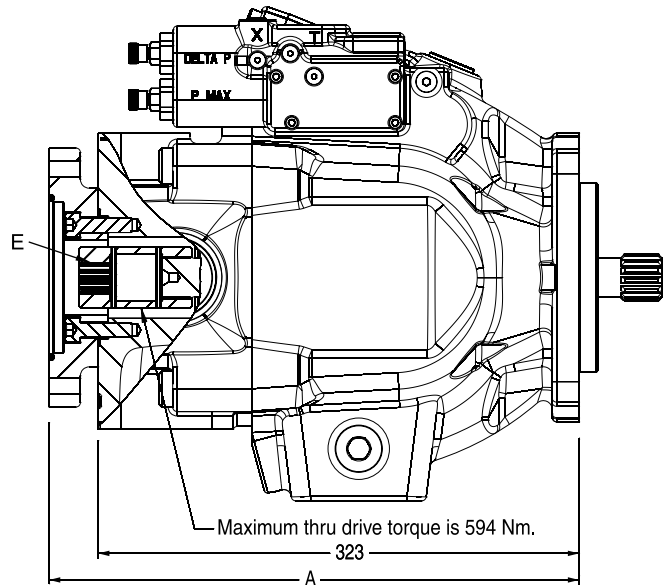
**B1 and B2 configurations**



**C1 and C3 configurations**



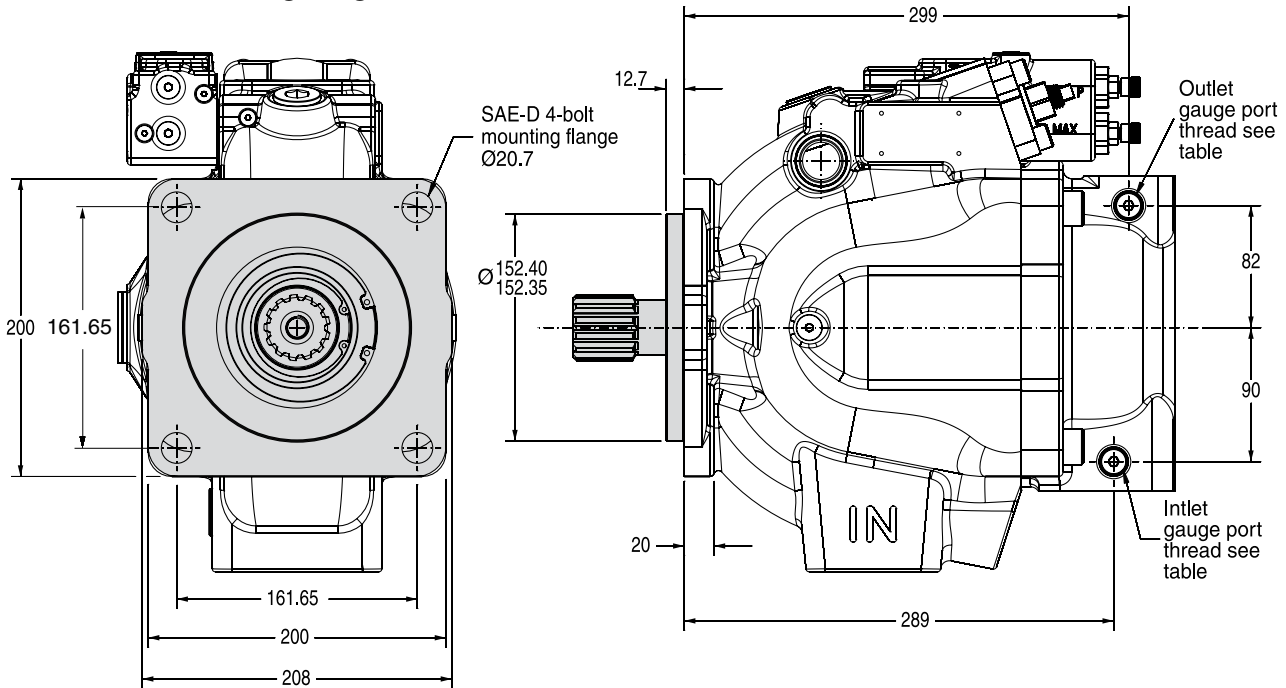
**P2105 partial cut-away of thru-drive area**



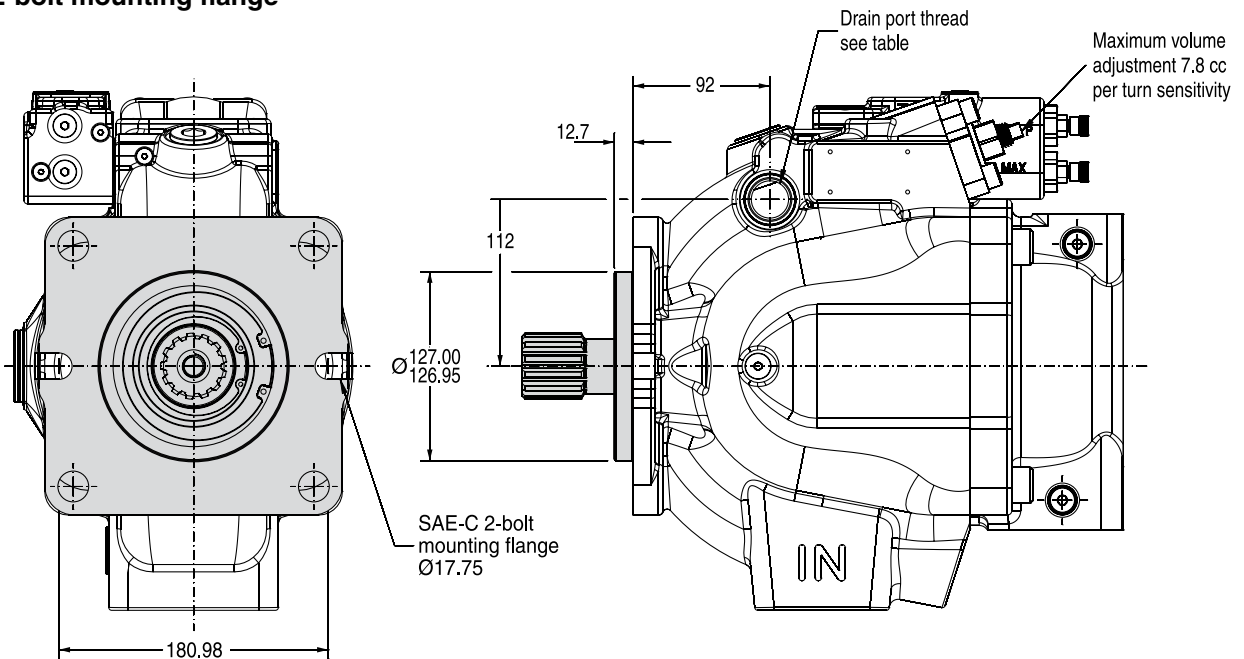
Pumps will be assembled with flange adapters as shown. Options B1, B2, C1 and C3 can be rotated 90°.

Thru-shaft option	A	B Ø	C	D	E	F UNC	F metric	G UNC	G metric	Pump weight
<b>A1</b>	323	82.625 82.575	106.38	N/A	SAE-A spline 9 tooth 16/32 pitch	3/8-16 UNC-2B THD	M10 x 1.5 THD	N/A	N/A	61 kg
<b>B1</b>	356	101.676 101.625	146.05	N/A	SAE-B spline 13 tooth 16/32 pitch	1/2-13 UNC-2B THD	M12 x 1.75 THD	N/A	N/A	64 kg
<b>B2</b>	356	101.676 101.625	146.05	N/A	SAE-BB spline 15 tooth 16/32 pitch	1/2-13 UNC-2B THD	M12 x 1.75 THD	N/A	N/A	64 kg
<b>C1, C3</b>	358	127.075 127.025	180.98	114.5	SAE-C spline 14 tooth 12/24 pitch	5/8-11 UNC-2B THD	M16 x 2 THD	1/2-13 UNC-2B THD	M12 x 1.75 THD	65 kg

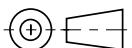
**P2145 Mounting flange  
SAE D 4-bolt mounting flange**



**SAE C 2-bolt mounting flange**

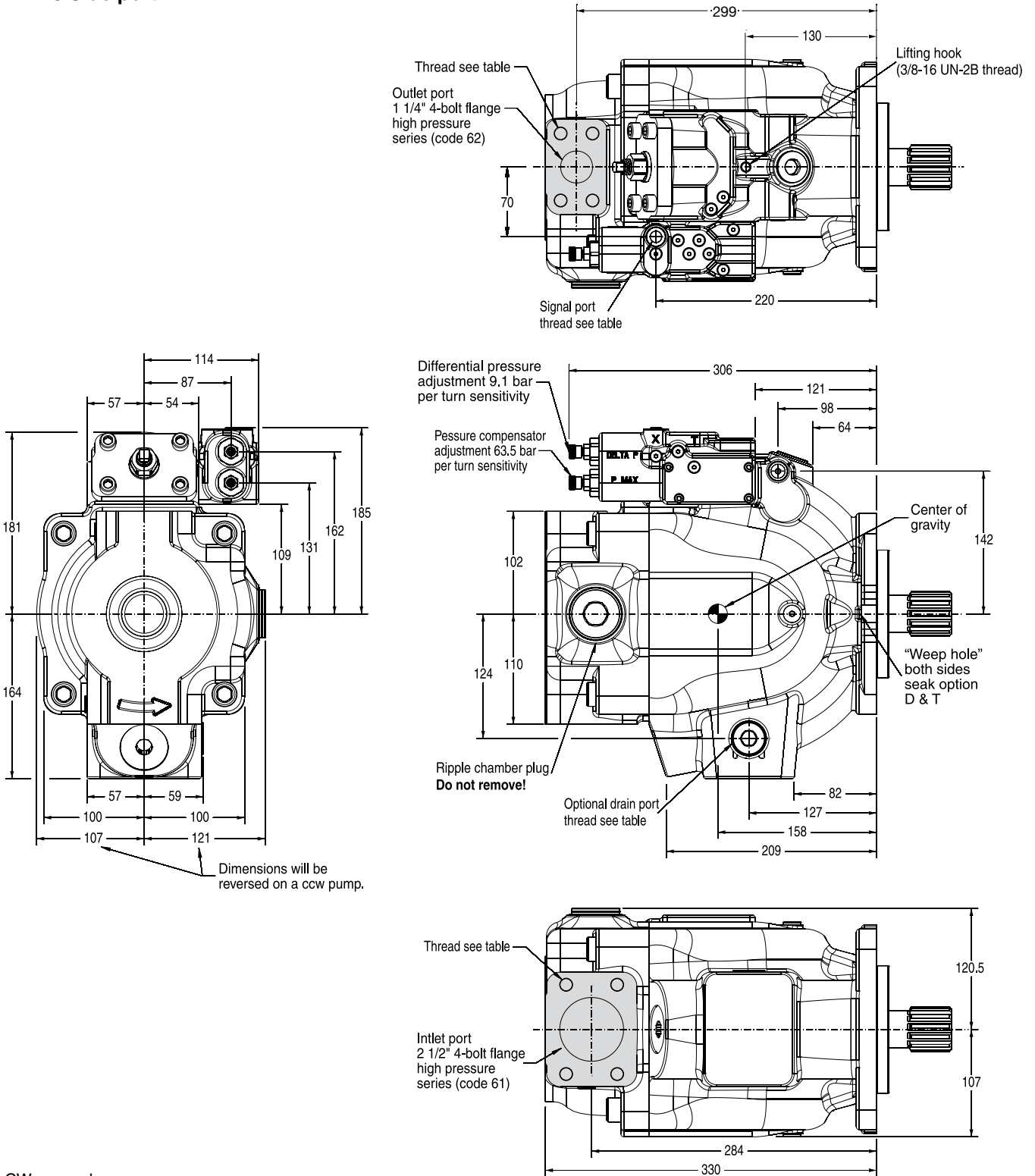


CW pump shown.  
CCW pump will have inlet and outlet gauge ports reversed.

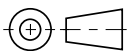


Port ordering code	Drain port	Inlet gauge port / Outlet gauge port
"A" side - UNC	SAE-12 straight thread / O-ring port: 1-1/16-12 UN thread	SAE-4 straight thread / O-ring port: 7/16-20 UN thread
"B" side - metric	ISO 6149 straight thread / O-ring port: M27 x 2 thread	ISO 6149 straight thread / O-ring port: M12 x 1.5 thread

**P2145 Side port**

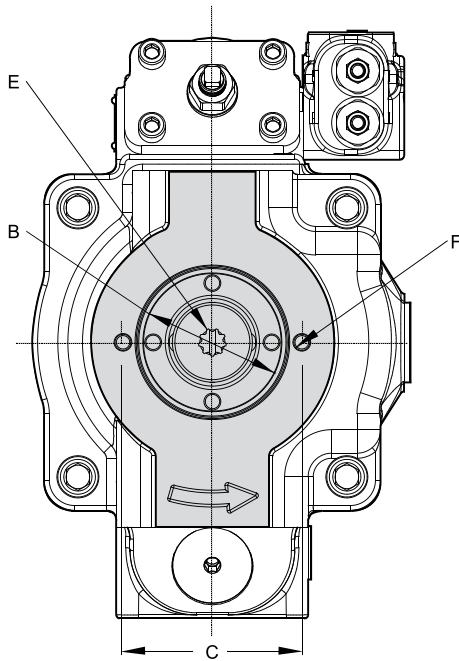


CW pump shown.  
 CCW pump will have inlet and outlet gauge ports reversed.

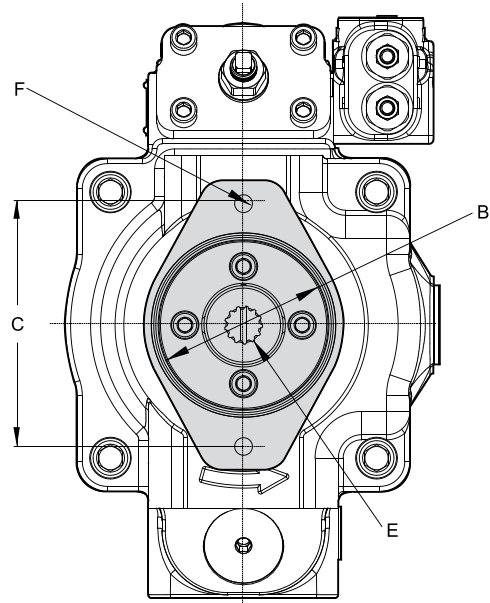


Port option	Drain port	Inlet port	Outlet port	Inlet gauge port / Outlet gauge port / Signal port
"A" side - UNC	SAE-12 straight thread / O-ring port: 1-1/16-12 thread	1/2-13 UN	1/2-13 UN	SAE-4 straight thread / O-ring port: 7/16-20 UN thread
"B" side - metric	ISO 6149 straight thread / O-ring port: M27 x 2 thread	M12 x 1.75	M12 x 1.75	ISO 6149 straight thread / O-ring port: M12 x 1.5 thread

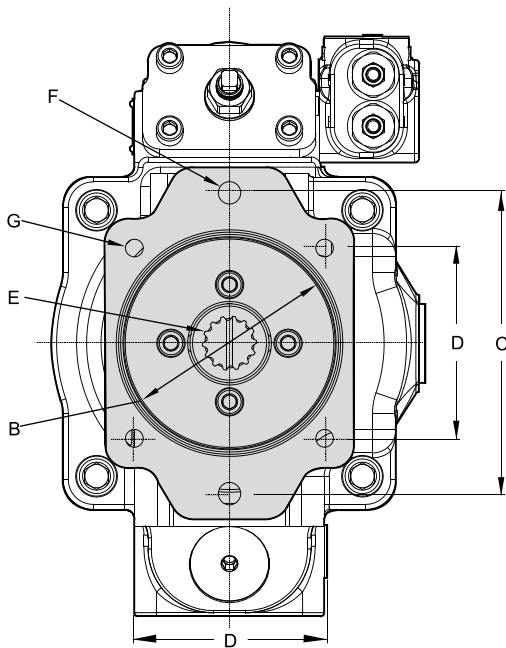
**P2145 Thru-shaft option  
 A1 configuration**



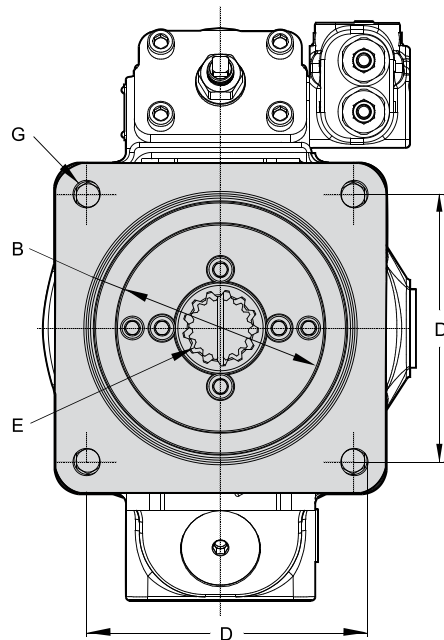
**B1 and B2 configurations**



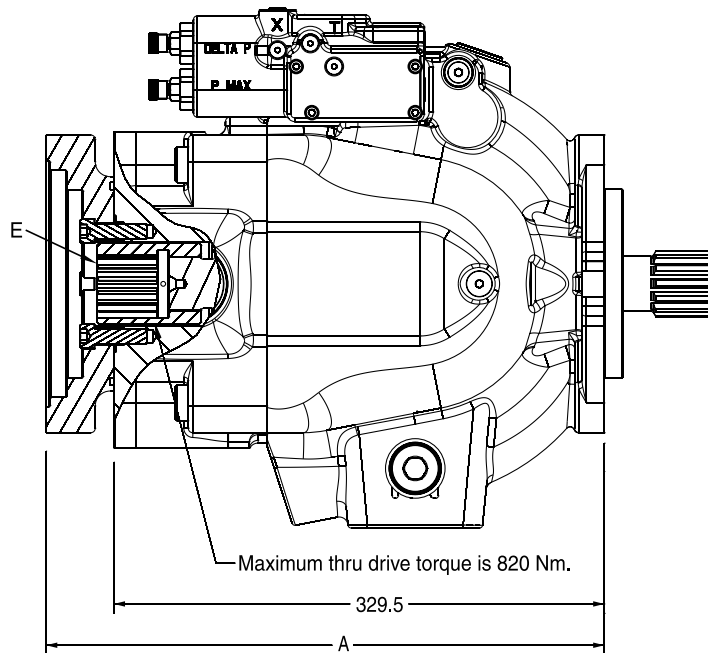
**C1, C2, C3 and C4 configurations**



**D3 configuration**



**P2145 Thru-drive option**

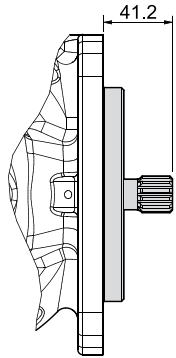


Thru-shaft option	A	B Ø	C	D	E	F UNC	F metric	G UNC	G metric	Pump weight
<b>A1</b>	329.5	82.626 82.575	106.38	N/A	SAE-A spline 9 tooth 16/32 pitch	3/8-16 UNC-2B THD	M10 x 1.5 THD	N/A	N/A	79.8 kg
<b>B1</b>	362.5	101.676 101.625	146.05	N/A	SAE-B spline 13 tooth 16/32 pitch	1/2-13 UNC-2B THD	M12 x 1.75 THD	N/A	N/A	82.6 kg
<b>B2</b>	362.5	101.676 101.625	146.05	N/A	SAE-BB spline 15 tooth 16/32 pitch	1/2-13 UNC-2B THD	M12 x 1.75 THD	N/A	N/A	82.6 kg
<b>C1 &amp; C2</b>	364.5	127.075 127.025	180.98	NA	SAE-C spline 14 tooth 12/24 pitch	5/8-11 UNC-2B THD	M16 x 2 THD	1/2-13 UNC-2B THD	M12 x 1.75 THD	83.9 kg
<b>C3</b>	364.5	127.075 127.025	180.98	114.5	SAE-C spline 14 tooth 12/24 pitch	5/8-11 UNC-2B THD	M16 x 2 THD	1/2-13 UNC-2B THD	M12 x 1.75 THD	83.9 kg
<b>C4</b>	364.5	127.075 127.025	180.98	114.5	SAE-CC spline 17 tooth 12/24 pitch	5/8-11 UNC-2B THD	M16 x 2 THD	1/2-13 UNC-2B THD	M12 x 1.75 THD	83.9 kg
<b>D3</b>	375	152.475 152.425	NA	161.65	SAE-D spline 13 tooth 8/16 pitch	NA	NA	3/4-10 UNC-2B THD	M16 x 2 THD	88 kg

**Dimensions**

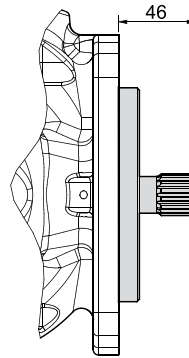
**P2 Shaft options**

**B1**



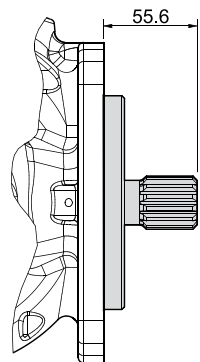
SAE "B" spline  
13 tooth  
16/32 pitch  
30° involute spline  
Max. input torque 209 Nm

**B2**



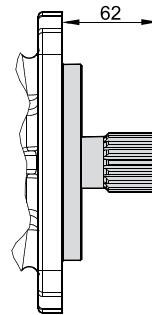
SAE "B-B" spline  
15 tooth  
16/32 pitch  
30° involute spline  
Max. input torque 337 Nm

**C1**



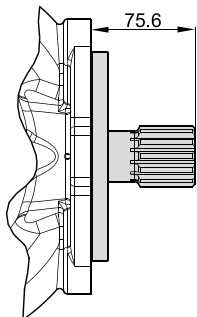
SAE "C" spline  
14 tooth  
12/24 pitch  
30° involute spline  
Max. input torque 641 Nm

**C2**



SAE "C-C" spline  
17 tooth  
12/24 pitch  
30° involute spline  
Max. input torque 1217 Nm

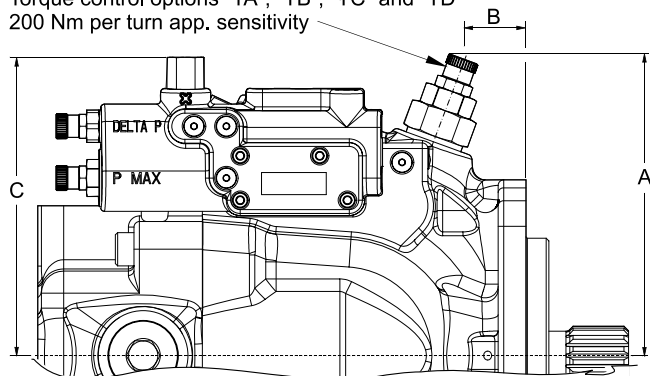
**D1**



SAE D  
13 tooth  
8/16 pitch  
30° involute spline  
Max. input torque 1701 Nm

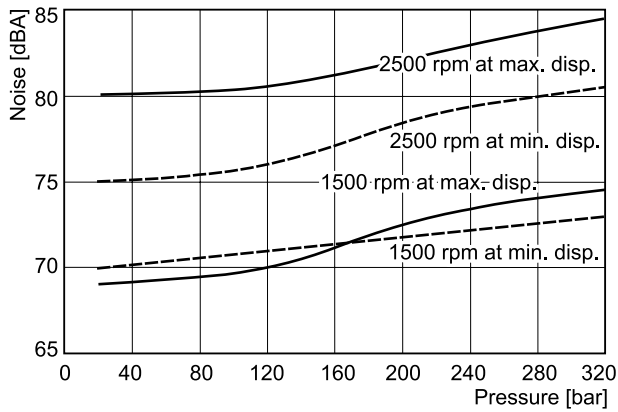
**Dimensions**

Torque control options "TA", "TB", "TC" and "TD"  
200 Nm per turn app. sensitivity

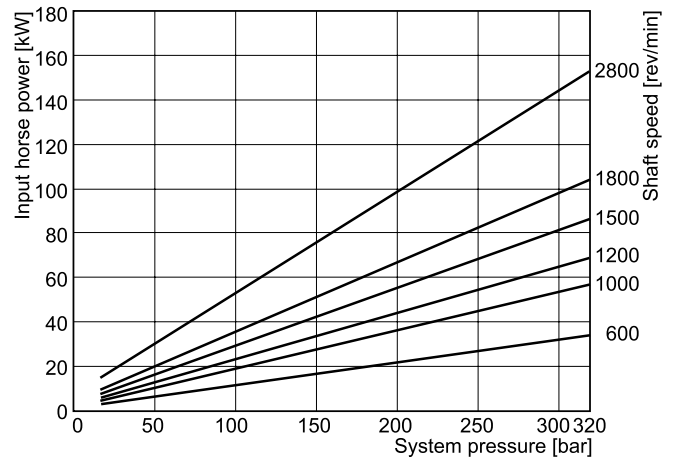


	P2060	P2075	P2105	P2145
<b>A</b>	163	171	190	202
<b>B</b>	34	69	69	69
<b>C</b>	161	154	175	186

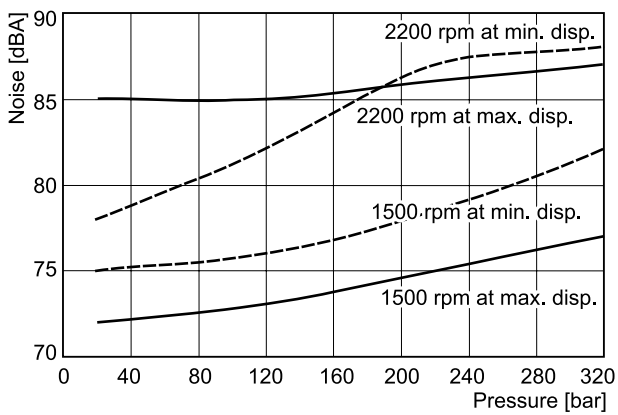
**P3 Noise characteristics at max./min. displacement**  
**P3105 Noise characteristics**



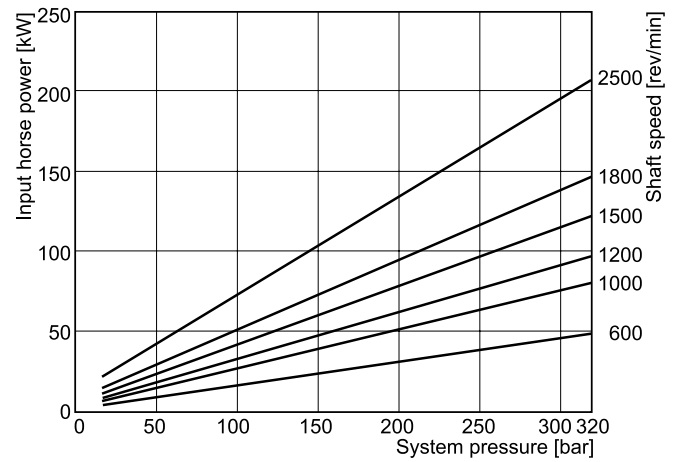
**P3 Series-typical drive power at full displacement**  
**P3105 Input power - full stroke**



**P3145 Noise characteristics**

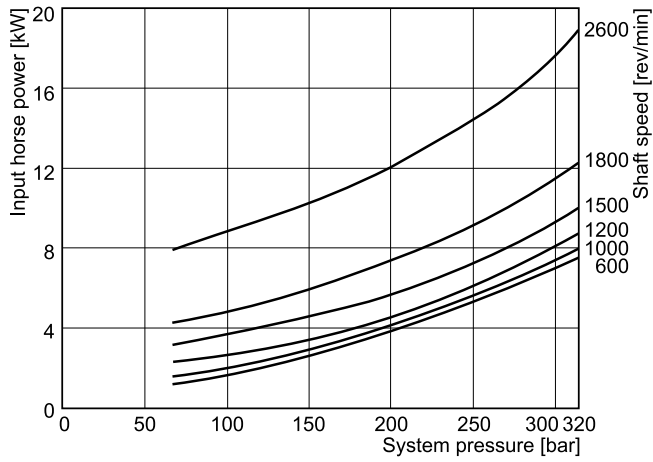


**P3145 Input power - full stroke**

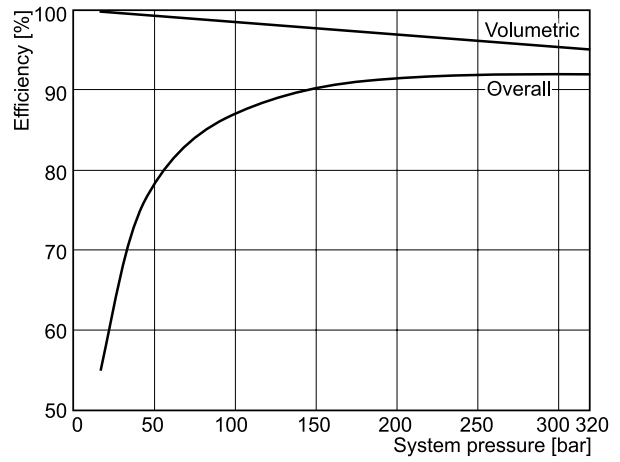


Fluid: Mineral oil ISO VG 32 at 40°C ; Inlet pressure: 1.0 bar (absolute) measured at inlet port.

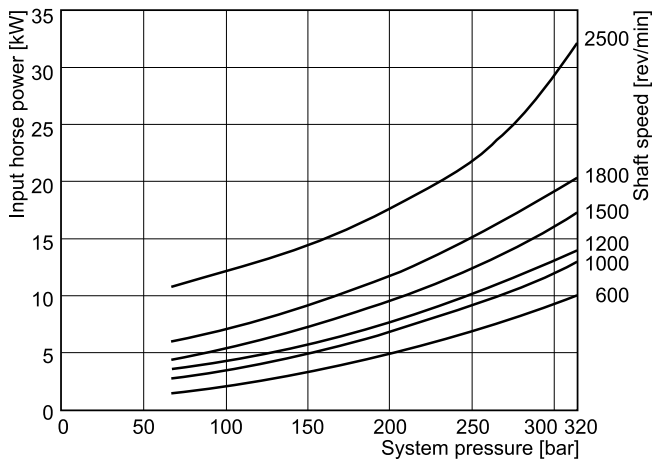
**P3 Series-typical compensated power  
 P3105 Input power - zero stroke**



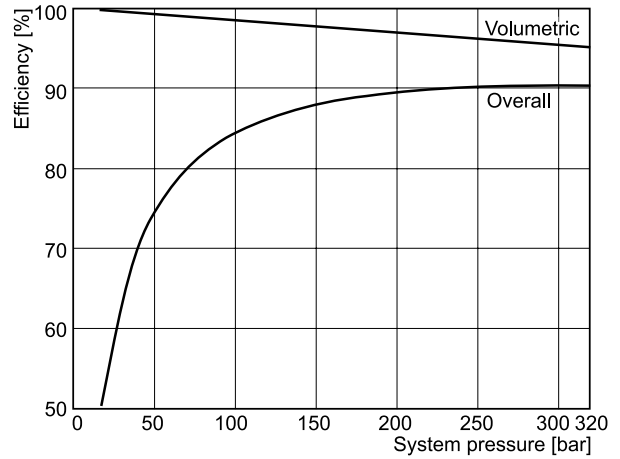
**P3 Series-typical efficiency at full displ. at 1800 rpm  
 P3105 Efficiency at 1800 rpm**



**P3145 Input power - zero stroke**



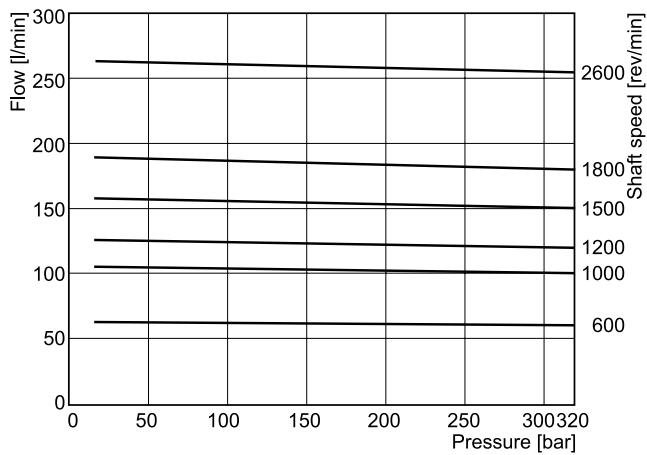
**P3145 Efficiency at 1800 rpm**



Fluid: Mineral oil ISO VG 32 at 40°C ; Inlet pressure: 1.0 bar (absolute) measured at inlet port.

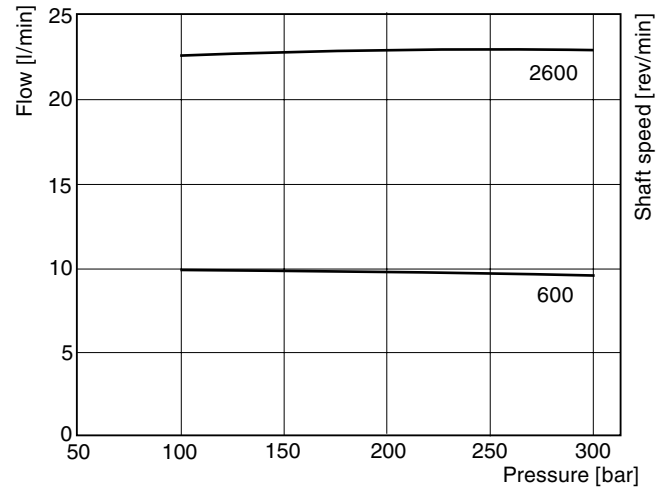
**P3 Series-typical flow vs. pressure**

**P3105 Outlet flow - full stroke**

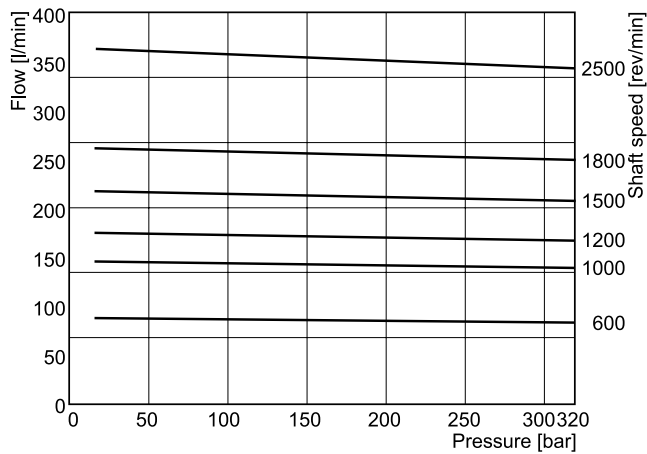


**P3 Series-typical compensated control drain flow**

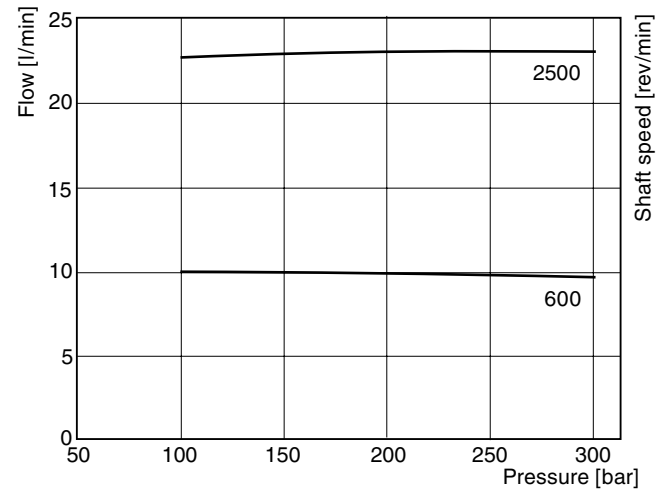
**P3105 Drain flow at zero stroke**



**P3145 Outlet flow - full stroke**



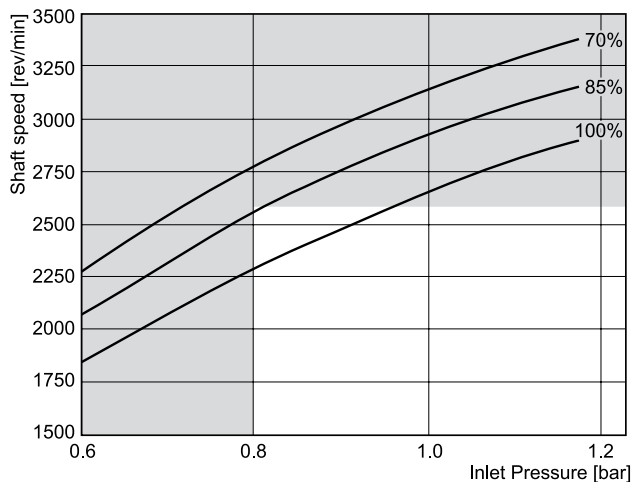
**P3145 Drain flow at zero stroke**



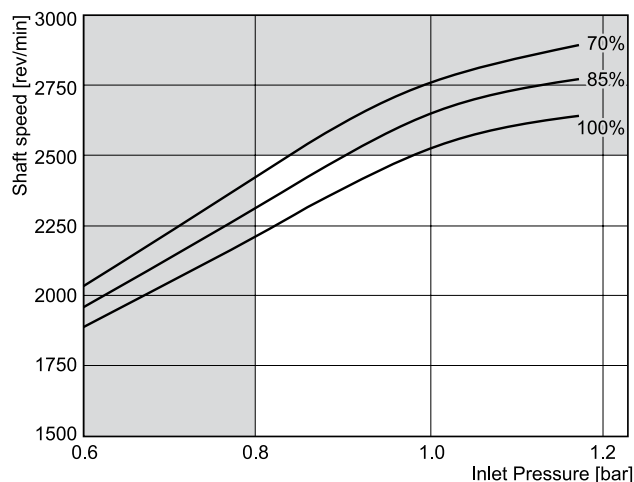
Fluid: Mineral oil ISO VG 32 at 40°C ; Inlet pressure: 1.0 bar (absolute) measured at inlet port.

**P3 Series-typical inlet characteristics vs. speed at various percentage displacements**

**P3105 Inlet characteristics**



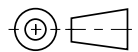
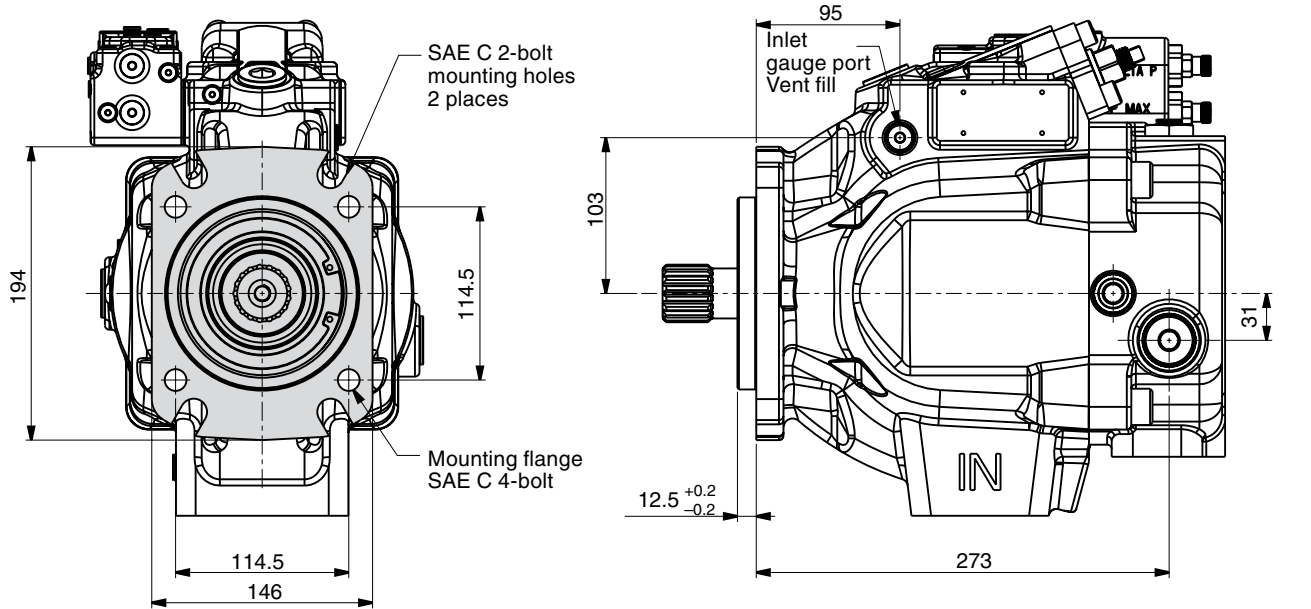
**P3145 Inlet characteristics**



Fluid: Mineral oil ISO VG 32 at 40°C ; Inlet pressure: 1.0 bar (absolute) measured at inlet port.

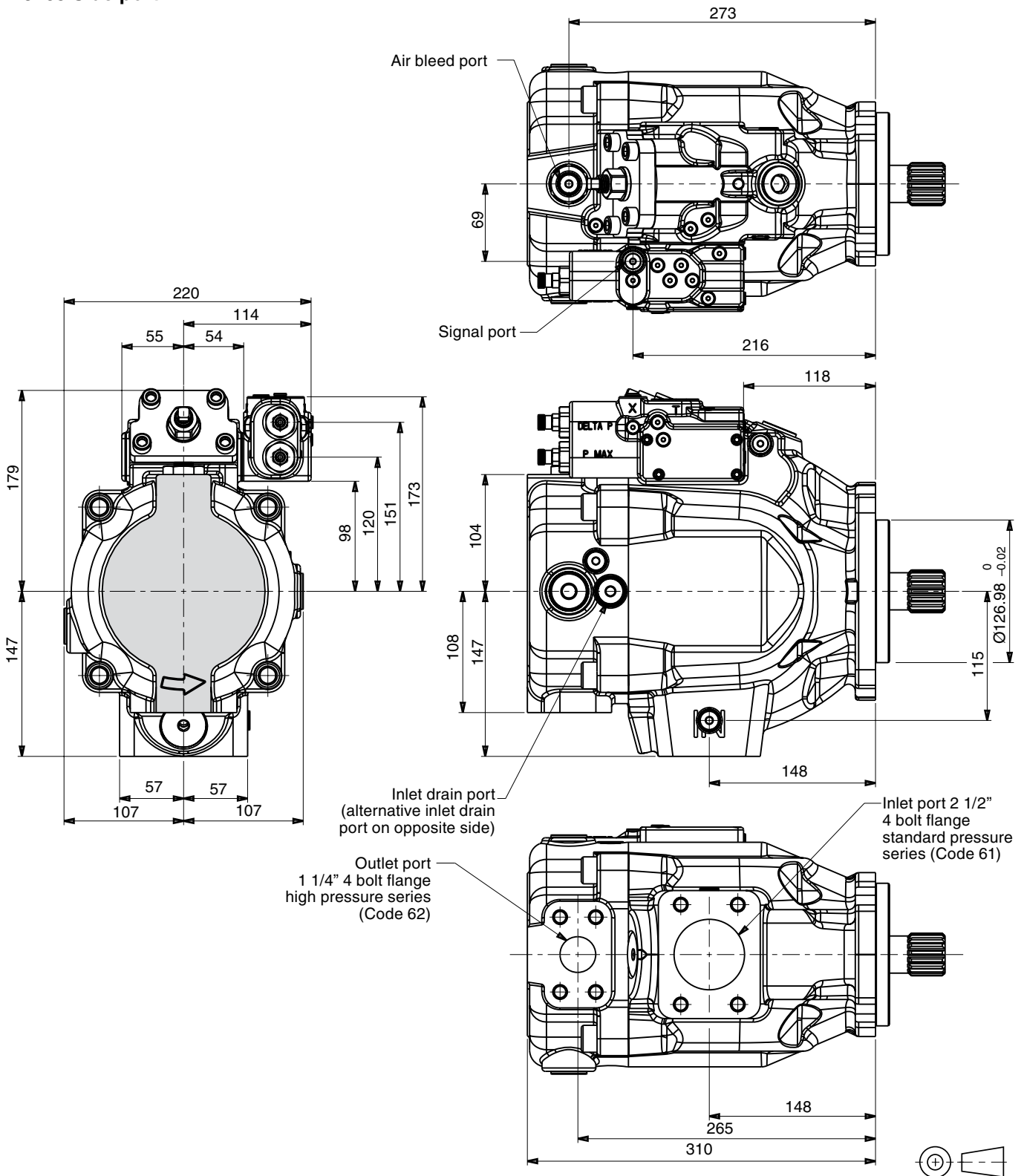
For operation at these speeds, please consult manufacturer for approval.

**P3105 Mounting flange**



Port ordering code	Airbleed port / vent port
"A" side - UNC	SAE-4 straight thread / O-ring port: 7/16-20 UN thread
"B" side - metric	ISO 6149 straight thread / O-ring port: M12 x 1.5 thread

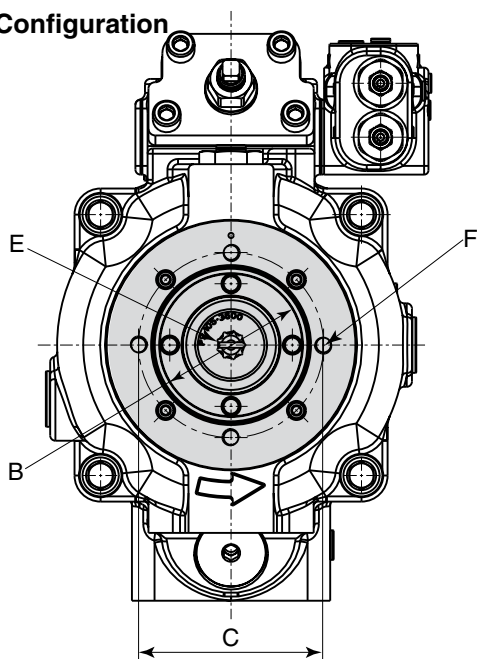
**P3105 Side port**



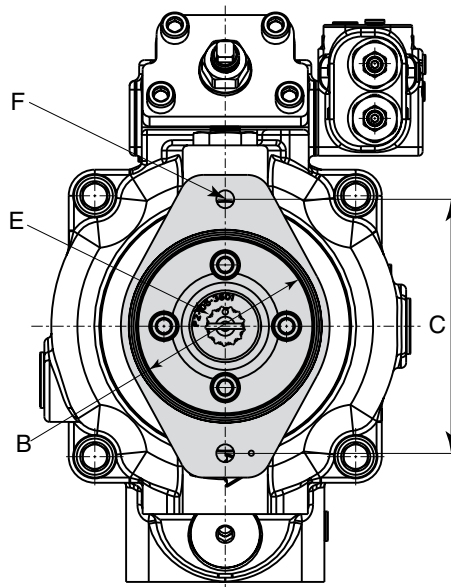
Port ordering code	Inlet port	Outlet port	Inlet gauge port / Outlet gauge port / Airbleed port / Signal port
"A" side - UNC	1/2-13 UNC	1/2-13 UNC	SAE-4 straight thread / O-ring port: 7/16-20 UN thread
"B" side - metric	M12 x 1.75	M12 x 1.75	ISO 6149 straight thread / O-ring port: M12 x 1.5 thread

**P3105 Thru-shaft option**

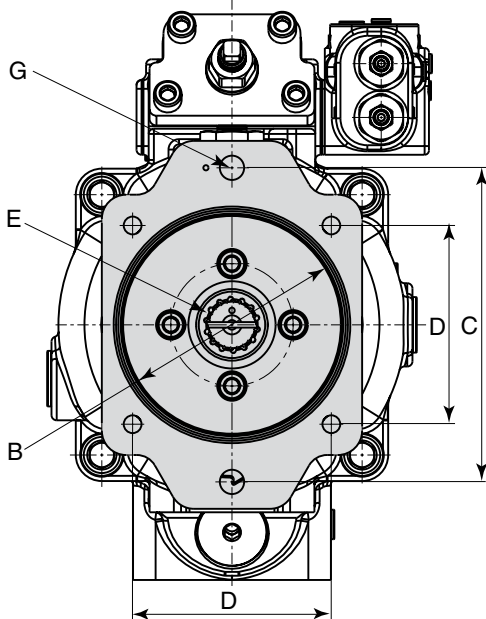
**A1 Configuration**



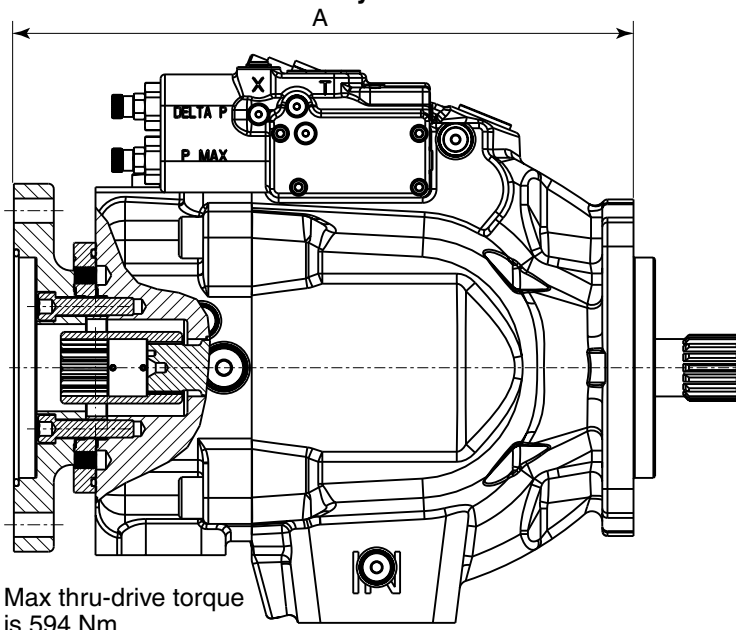
**B1 and B2 Configuration**



**C1 and C3 Configuration**



**P3105 Partial cut-away of thru-drive area**

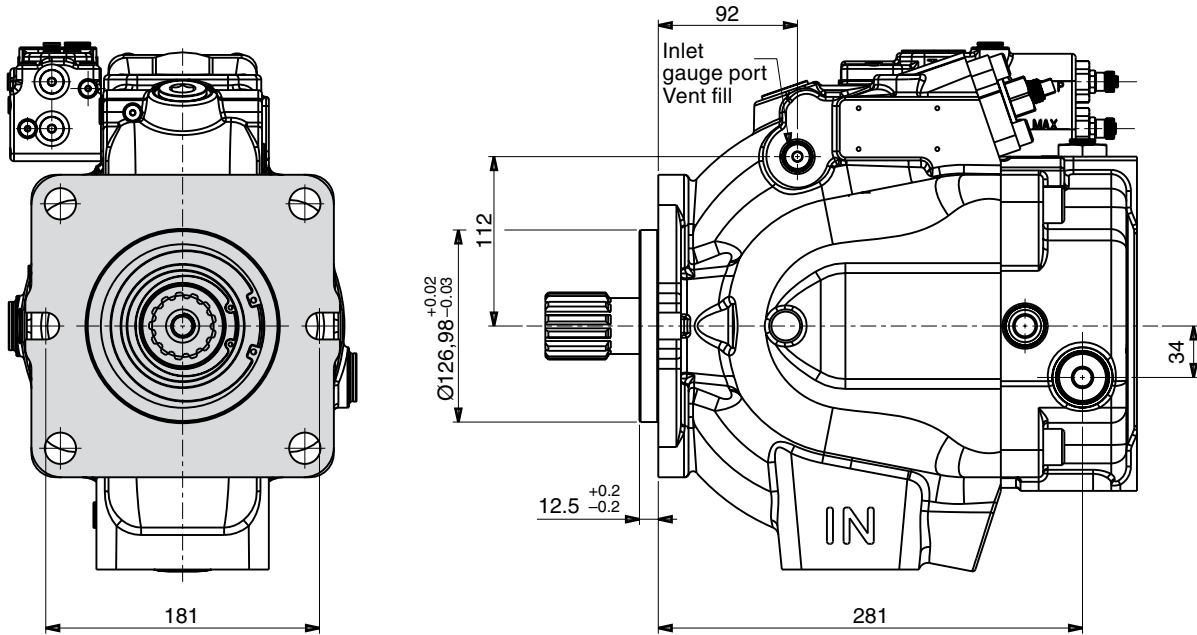


Thru-shaft option	A	B Ø	C	D	E	F UNC	F metric	G UNC	G metric
<b>A1</b>	292.5	82.626 82.575	106.3	N/A	SAE-A spline 9 tooth 16/32 pitch	3/ 16 UNC-2B THD	M10 x 1.5 THD	N/A	N/A
<b>B1</b>	325.5	101.676 101.625	146.1	N/A	SAE-B spline 13 tooth 16/32 pitch	1/2-13 UNC-2B THD	M12 x 1.75 THD	N/A	N/A
<b>B2</b>	325.5	101.676 101.625	146.1	N/A	SAE-BB spline 15 tooth 16/32 pitch	1/2-13 UNC-2B THD	M12 x 1.75 THD	N/A	N/A
<b>C1 C3</b>	327.5	127.075 127.025	181	114.5	SAE-C spline 14 tooth 12/24 pitch	1/2-13 UNC-2B THD	M12 x 1.75 THD	5/8-11 UNC-2B THD	M16 x 2 THD

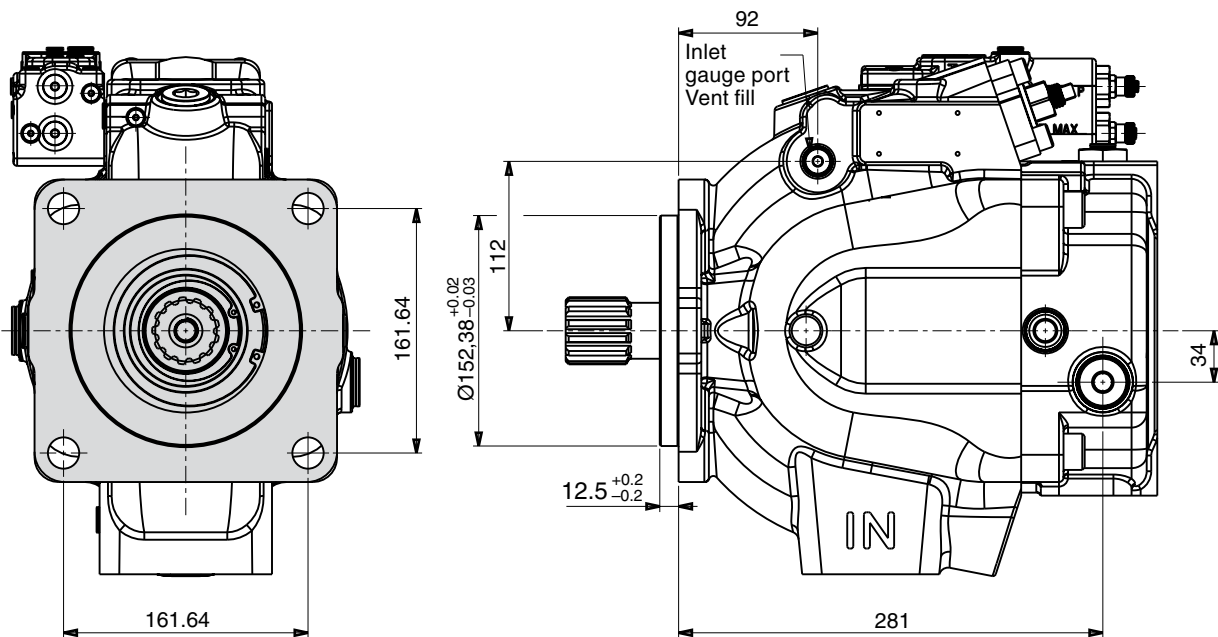
PI P2-P3 UK.PM6.5 RH



**P3145 Mounting flange**  
**SAE C 2-bolt mounting flange**

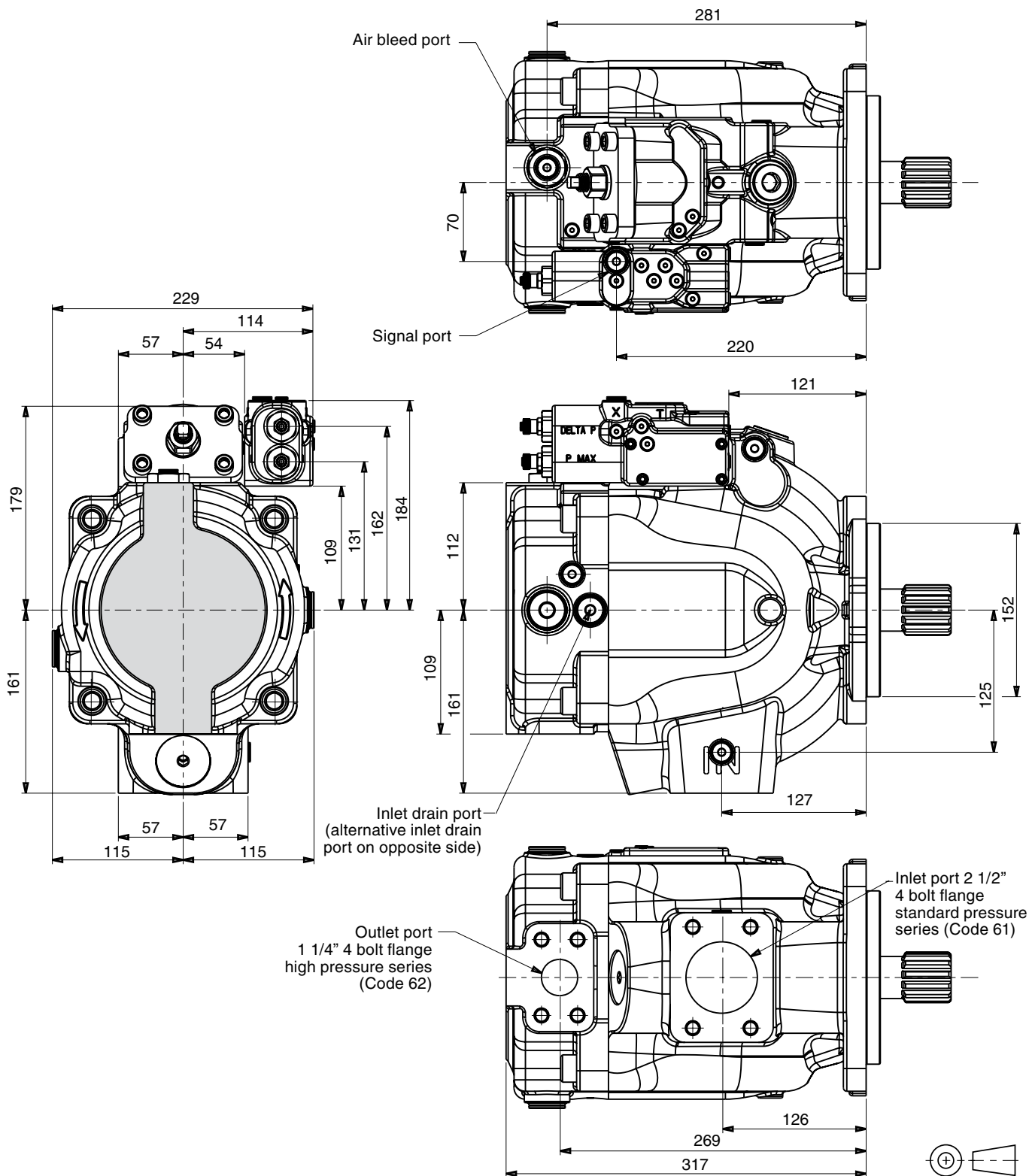


**SAE D 4-bolt mounting flange**



Port ordering code	Airbleed port / vent port
"A" side - UNC	SAE-4 straight thread / O-ring port: 7/8-20 UN thread
"B" side - metric	ISO 6149 straight thread / O-ring port: M12 x 1.5 thread

**P3145 Side port**

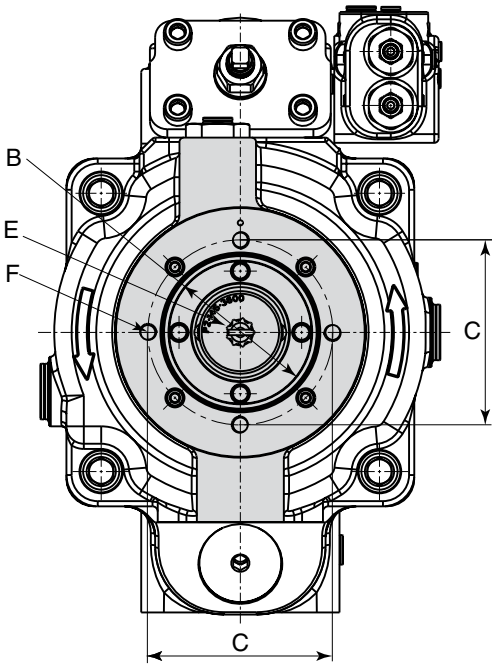


Port ordering code	Inlet port	Outlet port	Inlet gauge port / Outlet gauge port / Airbleed port / Signal port
"A" side - UNC	1/2-13 UNC	1/2-13 UNC	SAE-4 straight thread / O-ring port: 7/16-20 UN thread
"B" side - metric	M12 x 1.75	M12 x 1.75	ISO 6149 straight thread / O-ring port: M12 x 1.5 thread

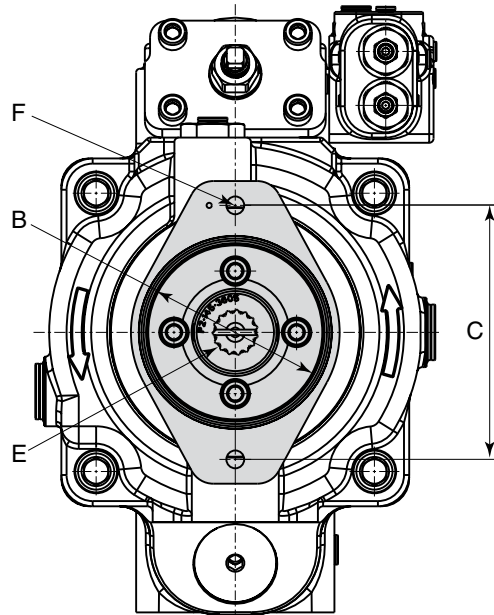
PI P2-P3 UK.PM6.5 RH



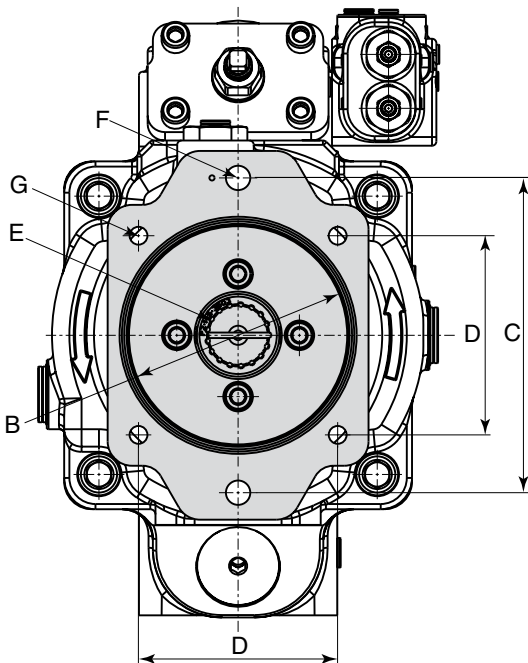
**P3145 Thru-shaft option**  
**A1 Configuration**



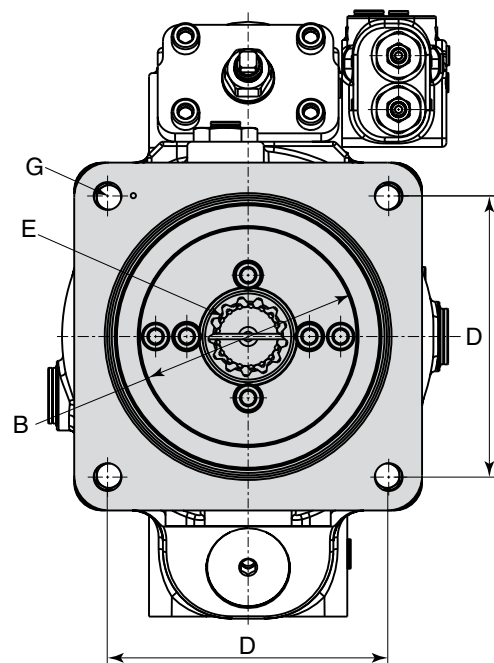
**B1 and B2 Configuration**



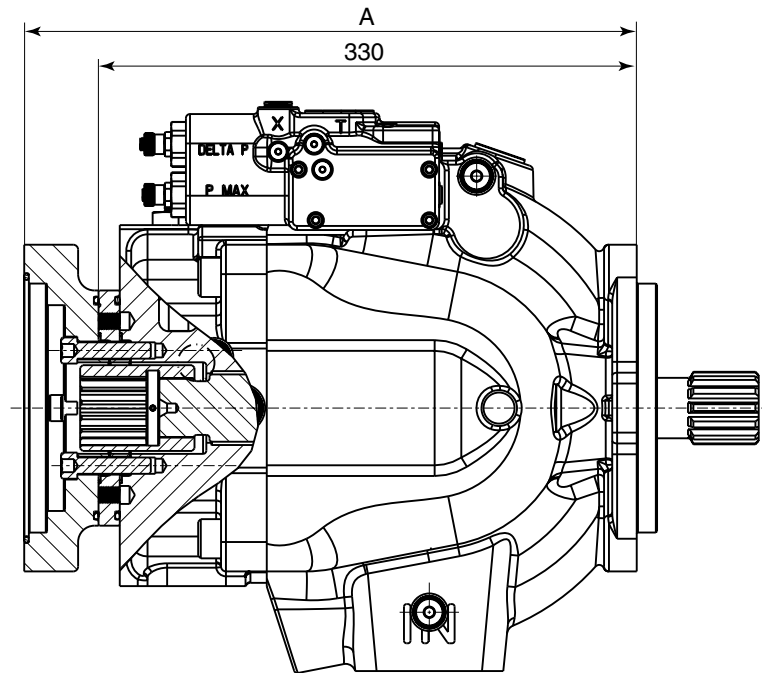
**C1, C2, C3 and C4 Configuration**



**D3 Configuration**



**P3145 Thru-drive option**



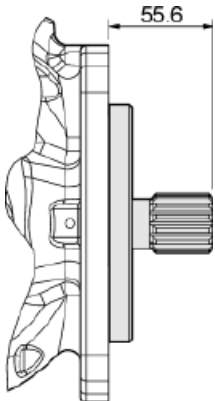
Max thru-drive torque is 820 Nm

Thru-shaft option	A	B Ø	C	D	E	F UNC	F metric	G UNC	G metric	Pump weight
<b>A1</b>	329.5	82.626 82.575	106.38	N/A	SAE-A spline 9 tooth 16/32 pitch	3/8-16 UNC-2B THD	M10 x 1.5 THD	N/A	N/A	75.7 kg
<b>B1</b>	362.5	101.676 101.625	146.05	N/A	SAE-B spline 13 tooth 16/32 pitch	1/2-13 UNC-2B THD	M12 x 1.75 THD	N/A	N/A	78.5 kg
<b>B2</b>	362.5	101.676 101.625	146.05	N/A	SAE-BB spline 15 tooth 16/32 pitch	1/2-13 UNC-2B THD	M12 x 1.75 THD	N/A	N/A	78.5 kg
<b>C1</b>	364.5	127.075 127.025	180.98	NA	SAE-C spline 14 tooth 12/24 pitch	5/8-11 UNC-2B THD	M16 x 2 THD	1/2-13 UNC-2B THD	M12 x 1.75 THD	80 kg
<b>C2</b>	364.5	127.075 127.025	180.98	NA	SAE-C spline 17 tooth 12/24 pitch	5/8-11 UNC-2B THD	M16 x 2 THD	1/2-13 UNC-2B THD	M12 x 1.75 THD	80 kg
<b>C3</b>	364.5	127.075 127.025	180.98	114.5	SAE-C spline 14 tooth 12/24 pitch	5/8-11 UNC-2B THD	M16 x 2 THD	1/2-13 UNC-2B THD	M12 x 1.75 THD	80 kg
<b>C4</b>	364.5	127.075 127.025	180.98	114.5	SAE-CC spline 17 tooth 12/24 pitch	5/8-11 UNC-2B THD	M16 x 2 THD	1/2-13 UNC-2B THD	M12 x 1.75 THD	80 kg
<b>D3</b>	375	152.475 152.425	NA	161.65	SAE-D spline 13 tooth 8/16 pitch	NA	NA	3/4-10 UNC-2B THD	M16 x 2 THD	83.9 kg

**Dimensions**

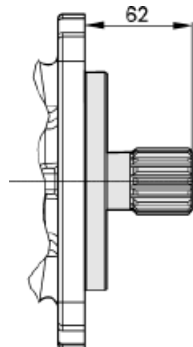
**P3 Shaft options**

**“C1” Shaft option**



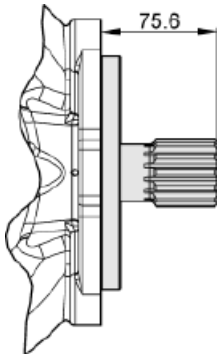
SAE “C” spline  
14 tooth  
12/24 pitch  
30° involute spline  
max. input torque 641Nm

**“C2” Shaft option**



SAE “CC” spline  
17 tooth  
12/24 pitch  
30° involute spline  
max. input torque 1217Nm

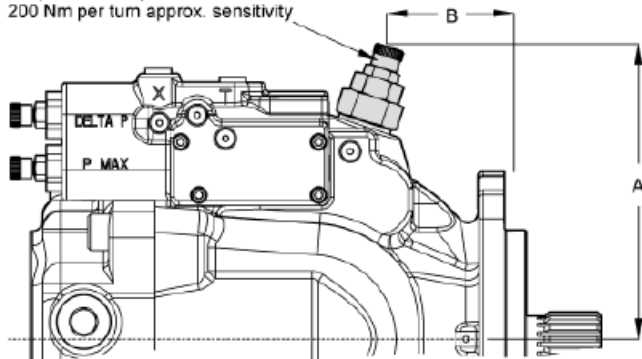
**“D1” Shaft option**



SAE D  
13 tooth  
8/16 pitch  
30° involute spline  
max. input torque 1701Nm

**Dimensions**

Torque control options “TA”, “TB”, “TC” and “TD”  
200 Nm per turn approx. sensitivity



	P3105	P3145
A	190	202
B	69	69

**Fluid recommendations**

- Normal mineral oil
- Premium hydraulic fluid / HLP oil
- Bio-degradable hydraulic fluid
- Synthetic hydraulic fluid
- Fire resistant fluids, water based fluids (HFC)

**Note:** Maximum system pressure reduced to 210bar for water based fluids. Bearing life time reduced to 25% by using water based fluids.

**Viscosity**

Min. viscosity for short periods: 10 mm<sup>2</sup>/s (cSt)  
 Normal operating viscosity: 15...40 mm<sup>2</sup>/s (cSt)  
 Max. viscosity for short periods: 1000 mm<sup>2</sup>/s (cSt)

**Filtration**

For maximum pump and system component functionality and life, the system should be protected from contamination by effective filtration.

Fluid cleanliness should be in accordance with ISO classification ISO 4406. The quality of filter elements should be in accordance with ISO standards.

Recommendation for filtration:

Class 21/18/14, according to ISO 4406

**Seals**

Check hydraulic fluid specification for chemical resistance of seal material.

Check temperature range of seal material and compare with max. system and ambient temperature.

N - Nitrile, single shaft seal -40 ... +90 °C

D - Nitrile, double shaft seal -40 ... +90 °C

V - Fluorocarbon, single shaft seal -15 ... +150 °C

T - Fluorocarbon, double shaft seal -15 ... +150 °C

**Note:** The highest fluid temperature will be at the drain port of the pump, up to 20°C higher than in the reservoir.

**Axial / Radial Loads**

Units subjected to radial loads require the installation of an outboard bearing. Axial Loads are not permitted.

**Note**

This document and other information from Parker Hannifin GmbH, its subsidiaries, sales offices and authorized distributors provide product or system options for further investigation by users having technical expertise. Before you select or use any product or system it is important that you analyse all aspects of your application and review the information concerning the product or system in the current product catalogue. Due to the variety of operating conditions and applications for these products or systems, the user, through his own analysis and testing, is solely responsible for making the final selection of the products and systems and assuring that all performance and safety requirements of the application are met. The products are subject to change by Parker Hannifin GmbH at any time without notice.

# Parker Worldwide

**AE – UAE, Dubai**  
Tel: +971 4 8127100  
parker.me@parker.com

**AR – Argentina, Buenos Aires**  
Tel: +54 3327 44 4129

**AT – Austria, Wiener Neustadt**  
Tel: +43 (0)2622 23501-0  
parker.austria@parker.com

**AT – Eastern Europe, Wiener Neustadt**  
Tel: +43 (0)2622 23501 900  
parker.easteurope@parker.com

**AU – Australia, Castle Hill**  
Tel: +61 (0)2-9634 7777

**AZ – Azerbaijan, Baku**  
Tel: +994 50 2233 458  
parker.azerbaijan@parker.com

**BE/LU – Belgium, Nivelles**  
Tel: +32 (0)67 280 900  
parker.belgium@parker.com

**BR – Brazil, Cachoeirinha RS**  
Tel: +55 51 3470 9144

**BY – Belarus, Minsk**  
Tel: +375 17 209 9399  
parker.belarus@parker.com

**CA – Canada, Milton, Ontario**  
Tel: +1 905 693 3000

**CH – Switzerland, Etoy**  
Tel: +41 (0) 21 821 02 30  
parker.switzerland@parker.com

**CL – Chile, Santiago**  
Tel: +56 2 623 1216

**CN – China, Shanghai**  
Tel: +86 21 2899 5000

**CZ – Czech Republic, Klecany**  
Tel: +420 284 083 111  
parker.czechrepublic@parker.com

**DE – Germany, Kaarst**  
Tel: +49 (0)2131 4016 0  
parker.germany@parker.com

**DK – Denmark, Ballerup**  
Tel: +45 43 56 04 00  
parker.denmark@parker.com

**ES – Spain, Madrid**  
Tel: +34 902 330 001  
parker.spain@parker.com

**FI – Finland, Vantaa**  
Tel: +358 (0)20 753 2500  
parker.finland@parker.com

**FR – France, Contamine s/Arve**  
Tel: +33 (0)4 50 25 80 25  
parker.france@parker.com

**GR – Greece, Athens**  
Tel: +30 210 933 6450  
parker.greece@parker.com

**HK – Hong Kong**  
Tel: +852 2428 8008

**HU – Hungary, Budapest**  
Tel: +36 1 220 4155  
parker.hungary@parker.com

**IE – Ireland, Dublin**  
Tel: +353 (0)1 466 6370  
parker.ireland@parker.com

**IN – India, Mumbai**  
Tel: +91 22 6513 7081-85

**IT – Italy, Corsico (MI)**  
Tel: +39 02 45 19 21  
parker.italy@parker.com

**JP – Japan, Fujisawa**  
Tel: +(81) 4 6635 3050

**KR – South Korea, Seoul**  
Tel: +82 2 559 0400

**KZ – Kazakhstan, Almaty**  
Tel: +7 7272 505 800  
parker.easteurope@parker.com

**LV – Latvia, Riga**  
Tel: +371 6 745 2601  
parker.latvia@parker.com

**MX – Mexico, Apodaca**  
Tel: +52 81 8156 6000

**MY – Malaysia, Shah Alam**  
Tel: +60 3 7849 0800

**NL – The Netherlands, Oldenzaal**  
Tel: +31 (0)541 585 000  
parker.nl@parker.com

**NO – Norway, Ski**  
Tel: +47 64 91 10 00  
parker.norway@parker.com

**NZ – New Zealand, Mt Wellington**  
Tel: +64 9 574 1744

**PL – Poland, Warsaw**  
Tel: +48 (0)22 573 24 00  
parker.poland@parker.com

**PT – Portugal, Leca da Palmeira**  
Tel: +351 22 999 7360  
parker.portugal@parker.com

**RO – Romania, Bucharest**  
Tel: +40 21 252 1382  
parker.romania@parker.com

**RU – Russia, Moscow**  
Tel: +7 495 645-2156  
parker.russia@parker.com

**SE – Sweden, Spånga**  
Tel: +46 (0)8 59 79 50 00  
parker.sweden@parker.com

**SG – Singapore**  
Tel: +65 6887 6300

**SK – Slovakia, Banská Bystrica**  
Tel: +421 484 162 252  
parker.slovakia@parker.com

**SL – Slovenia, Novo Mesto**  
Tel: +386 7 337 6650  
parker.slovenia@parker.com

**TH – Thailand, Bangkok**  
Tel: +662 717 8140

**TR – Turkey, Istanbul**  
Tel: +90 216 4997081  
parker.turkey@parker.com

**TW – Taiwan, Taipei**  
Tel: +886 2 2298 8987

**UA – Ukraine, Kiev**  
Tel: +380 44 494 2731  
parker.ukraine@parker.com

**UK – United Kingdom, Warwick**  
Tel: +44 (0)1926 317 878  
parker.uk@parker.com

**US – USA, Cleveland (industrial)**  
Tel: +1 216 896 3000

**US – USA, Lincolnshire (mobile)**  
Tel: +1 847 821 1500

**VE – Venezuela, Caracas**  
Tel: +58 212 238 5422

**ZA – South Africa, Kempton Park**  
Tel: +27 (0)11 961 0700  
parker.southafrica@parker.com

## European Product Information Centre

Free phone: 00 800 27 27 5374  
(from AT, BE, CH, CZ, DE, DK, EE, ES, FI, FR, IE, IL, IS, IT, LU, MT, NL, NO, PL, PT, RU, SE, UK, ZA)  
Fax: +44 1442 458112

## US Product Information Centre

Free phone: 1-800-27 27 537  
www.parker.com

