



**AMF** 1.2MPa(12bar)

## 旋转式过滤器

### Spin-on Filters



R1



R2



S1



S2



#### 材料

滤头:铝

旋装滤芯:钢

**压力 (ISO 10771-1:2002)**

最大工作压力: 1.2 MPa (12 bar)

试验压力: 1.5 MPa (15bar)

爆破压力: 2.5 MPa (25 bar)

标准滤芯: 400KPa (4 bar)

旁通阀(回油): 170 kPa (1.7 bar) +/-10%

旁通阀(吸油): 35 kPa (0.35 bar) +/-10%

**工作温度: -25° to +110° C**

#### MATERIALS

Head: Aluminium

Spin-on Cartridge: Steel

**PRESSURE (ISO 10771-1:2002)**

Max. working: 1.2 MPa (12 bar)

Test: 1.5 MPa (15 bar)

Bursting: 2.5 MPa (25 bar)

Collapse, differential for the element:  
400KPa(4bar)

**BYPASS VALVE:**

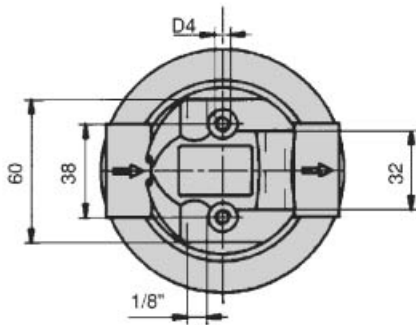
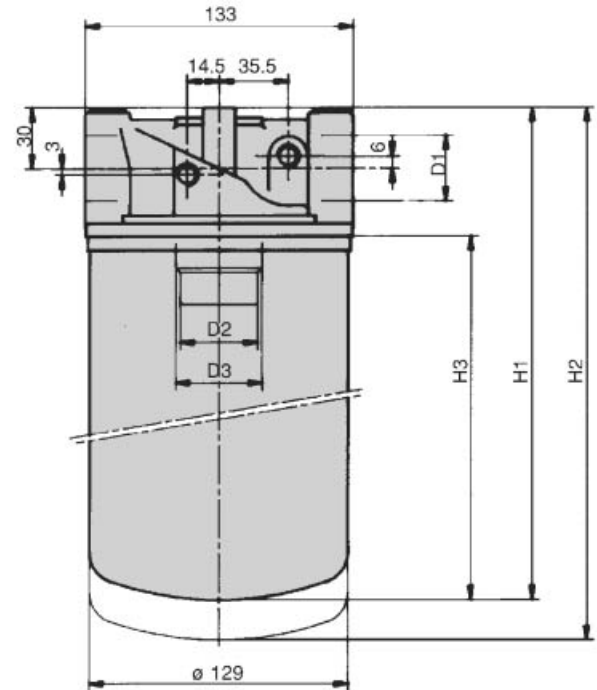
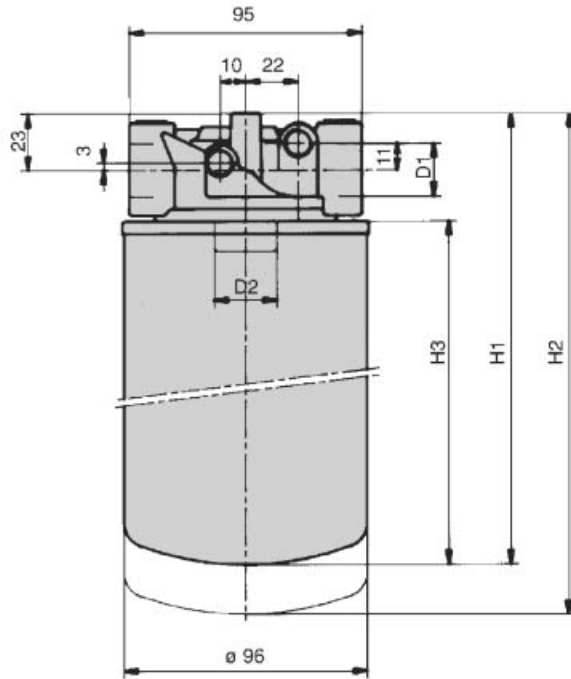
Return: 170 kPa (1.7 bar) +/-10%

Suction: 35 kPa (0.35 bar) +/-10%

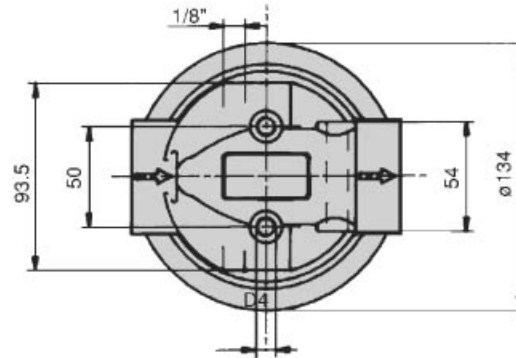
**WORKING TEMPERATURE:**

From -25° to +110° C

外廓尺寸  
DIMENSIONAL LAYOUT



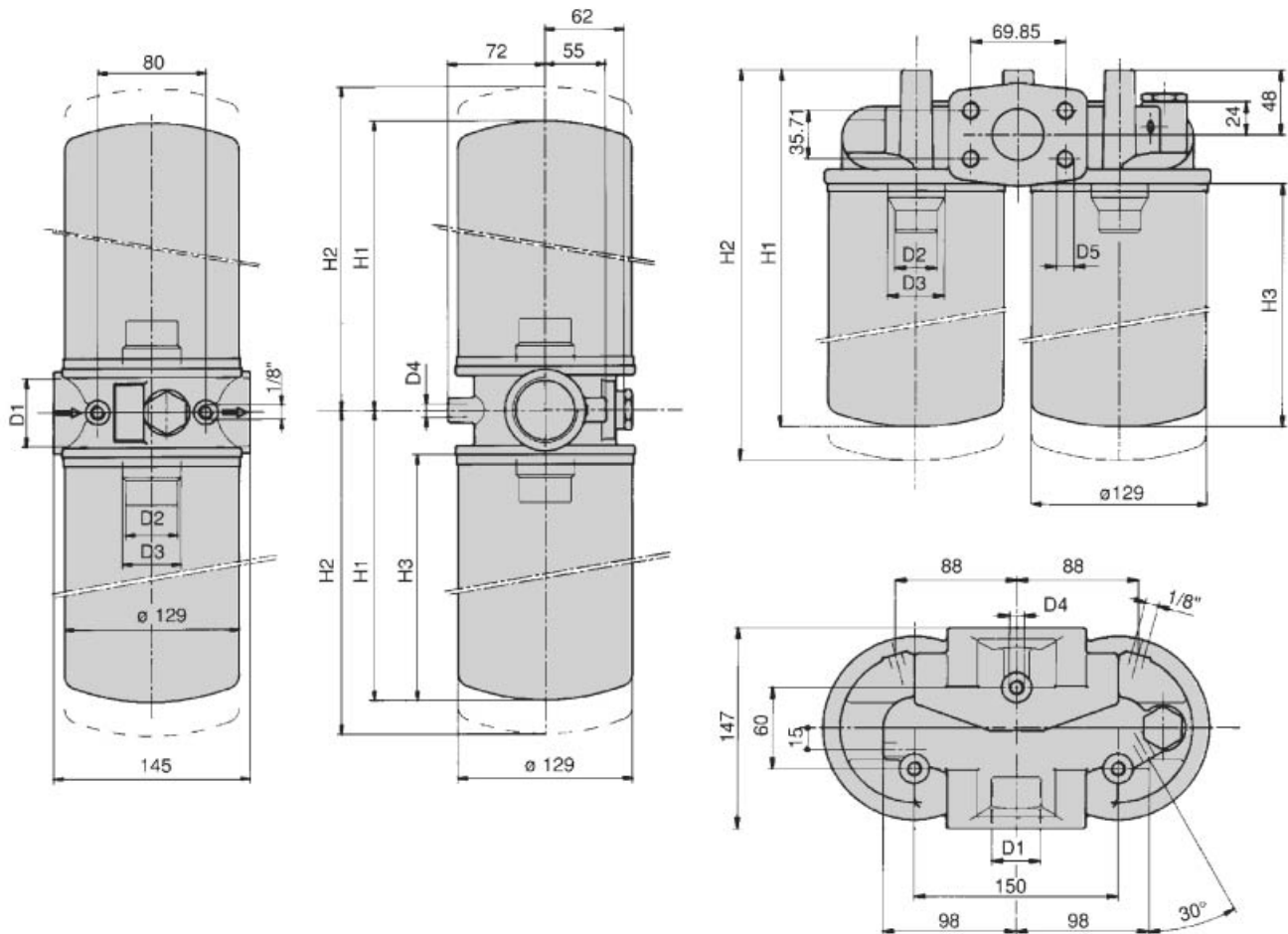
**AMF 15**



**AMF 30**

型号 Type	D1	D2	D3	D4	H1	H2	H3	Kg
<b>AMF 151E</b>	3/4" BSP	3/4" BSP	-	M8	188	208	145	0.8
<b>AMF 152E</b>					234	254	191	0.9
<b>AMF 151A</b>	3/4"NPT	1" 12 UNF	-	1/4"UNC	188	208	145	0.8
<b>AMF 152A</b>					234	254	191	0.9
<b>AMF 301E</b>	1 1/4"BSP	1 1/4"BSP	1 1/2" 16 - UNF	M8	248	278	181	1.8
<b>AMF 302E</b>					293	323	226	1.9
<b>AMF 301A</b>	1 1/4"NPT			5/16"UNC	241	271	175	1.95
<b>AMF 302A</b>					335	365	270	2.1

外廓尺寸  
DIMENSIONAL LAYOUT



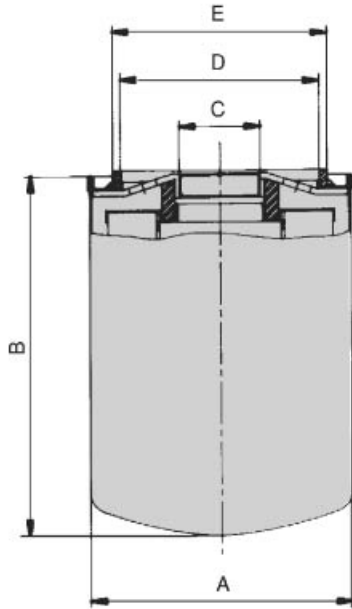
**AMF 60**

**AMF 80**

型号 Type	D1	D2	D3	D4	D5	H1	H2	H3	Kg
<b>AMF 601E</b>	1 1/2" BSP	1 1/4" BSP	1 1/2" 16 - UN	M10	-	216	246	181	3.4
<b>AMF 602E</b>						261	291	226	3.8
<b>AMF 601A</b>	1 1/2" NPT			3/8" UNC	-	209	239	175	3.5
<b>AMF 602A</b>						305	335	270	4.2
<b>AMF 801E1</b>	1 1/2" BSP	1 1/4" BSP	1 1/2" 16 - UN	M10	-	269	299	181	4.7
<b>AMF 802E1</b>						314	344	226	5.1
<b>AMF 801E2</b>	1 1/2" SAE 3000			-	M12	269	299	181	4.7
<b>AMF 802E2</b>						314	344	226	5.1
<b>AMF 801A1</b>	1 1/2" NPT			3/8" UNC	-	262	292	175	4.75
<b>AMF 802A1</b>						357	387	270	5.4
<b>AMF 801A2</b>	1 1/2" SAE 3000			-	1/2" UNC	262	292	175	4.75
<b>AMF 802A2</b>						357	387	270	5.4

滤芯尺寸

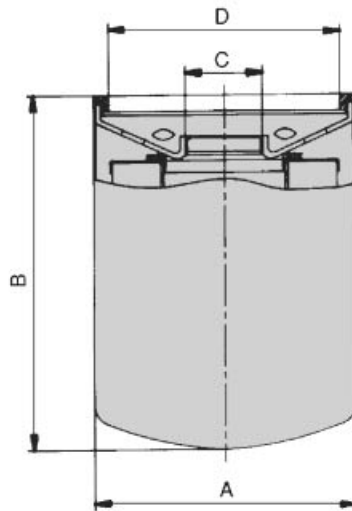
SPIN-ON ELEMENTS DIMENSIONAL LAYOUT



型号 Type	A	B	C	D	E	Kg
CA 151 E	95	145	3/4" BSP	62	72	0.6
CA 151 A			1" - 12UNF			
CA 152 E	95	191	3/4" BSP	62	72	0.7
CA 152 A			1" - 12UNF			
CA 301 E	129	181	1 1/4" BSP	98	108	1.15
CA 302 E		226				1.4

仅按客户要求定制  
On request only

CA 1505	95	90	3/4" BSP	62	72	0.4
---------	----	----	----------	----	----	-----

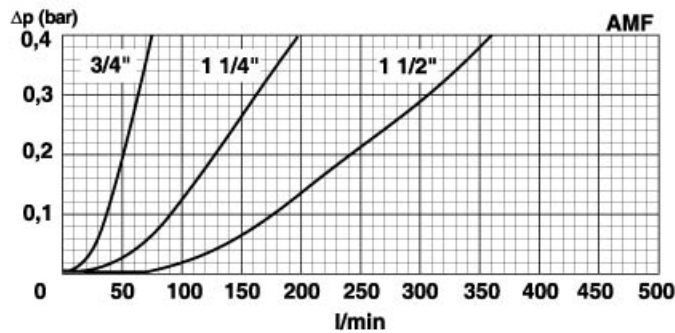


型号 Type	A	B	C	D	Kg
CA 301 A	129	175	1" 1/2 - 16UNF	112.5	1.2
CA 302 A		270			1.6

过滤器总成的压降等于壳体的压降加上清洁滤芯的压降。在选择流量时，过滤器的压降最好小于回油 50KPa(0.5bar)/吸油3KPa(0.03bar)。

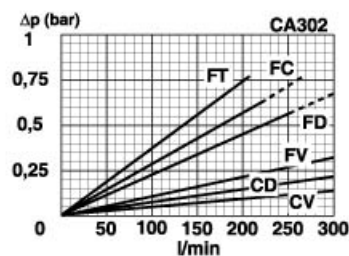
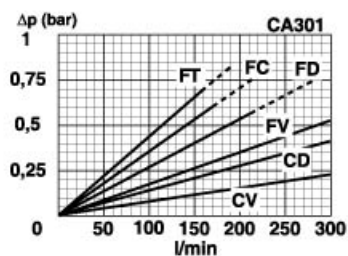
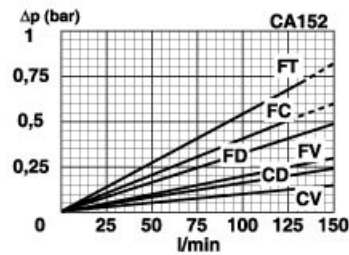
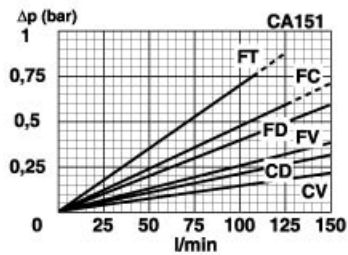
The "Assembly Pressure Drop ( $\Delta P$ )" is obtained by adding the pressure drop values of the Filter Housing and of the Clean Filter Element corresponding to the considered Flow Rate and it must be lower than 50KPa(0.5bar) for return and 3KPa(0.03bar) for suction.

### 用于回油过滤器壳体压降 Filter Housing Pressure Drop for Return

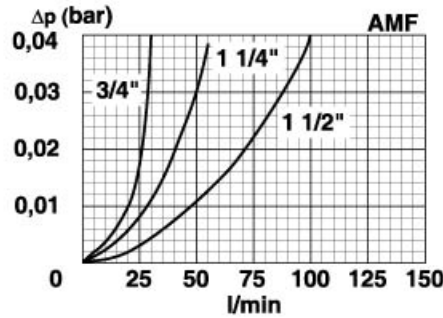


### 清洁滤芯压降 (滤材: 玻纤和纸)

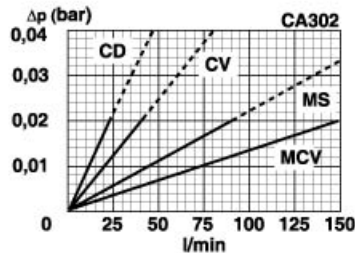
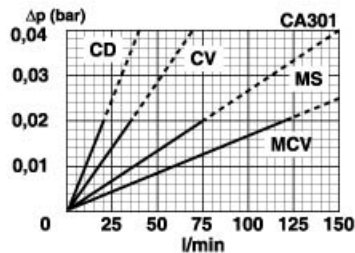
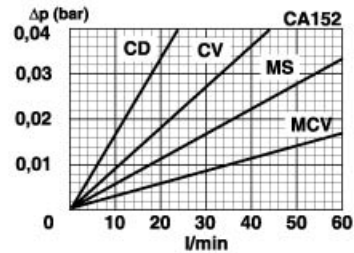
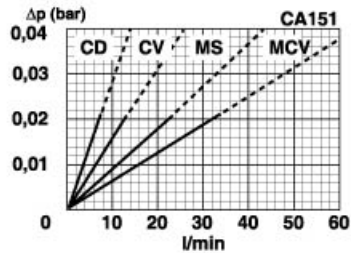
### Clean Filter Element Pressure Drop with F + and C+ Media



## 用于吸油过滤器壳体压降 Filter Housing Pressure Drop for Suction



## 清洁滤芯压降 (滤材: 滤纸和金属网) Clean Filter Element Pressure Drop with C+Wire mesh Media



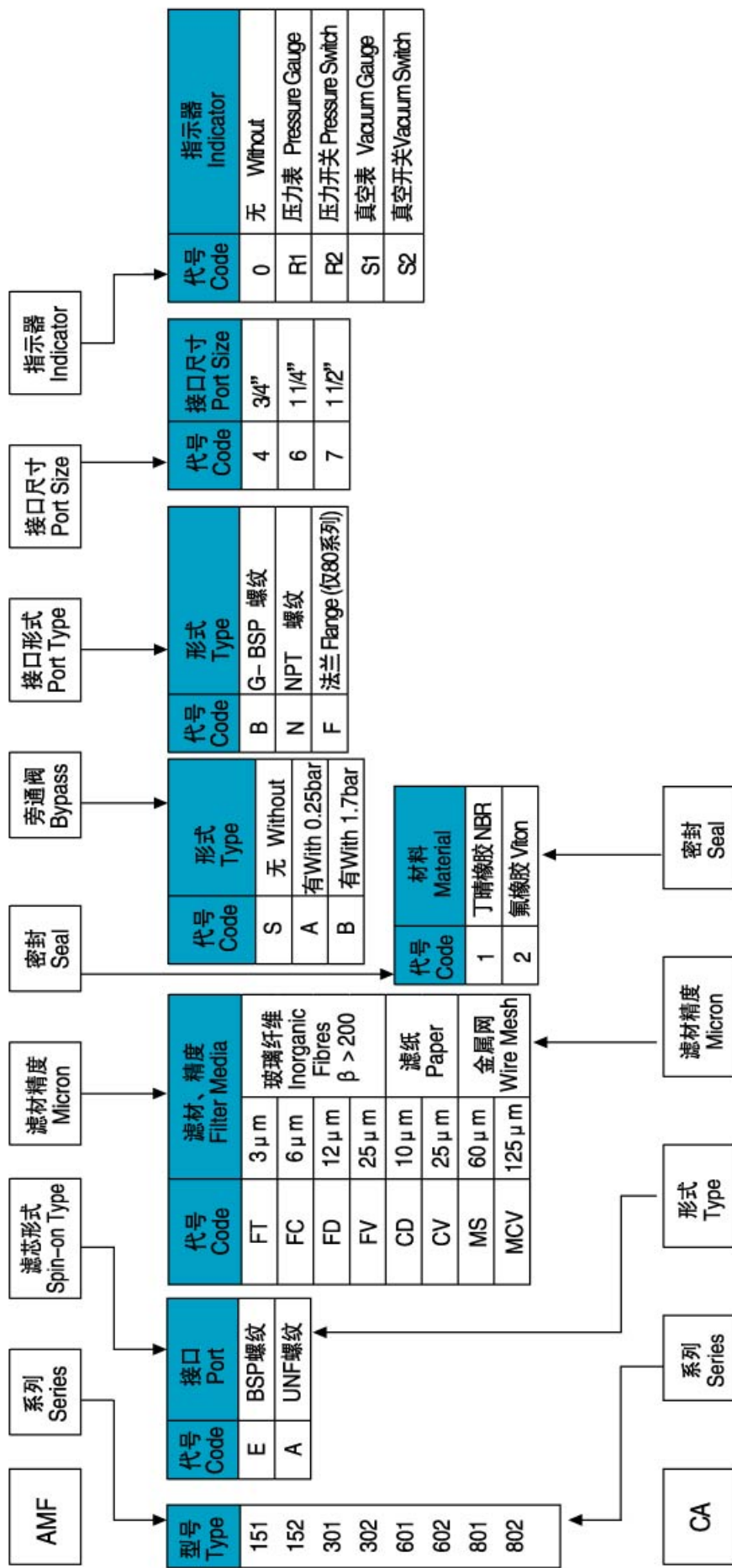
AMF60和AMF80是双滤芯过滤器, 其压降是壳体的压降加上滤芯压降的一半. 例如: AMF60+FD滤芯总成在60L/min时的压降是壳体压降加上CA301FD1滤芯在60L/min是压降的一半.

AMF60+ and AMF80 filters use double element canisters. The Assembly Pressure Drop is therefore determined by adding the Housing Pressure Drop. at the real flow rate and half the pressure drop of the CA30 element. E.g. The pressure drop of a complete AMF60-FD-- filter at a 60 l/min flow rate is obtained by adding the Housing Pressure Drop and half the CA301FD1 element pressure drop at 60 l/min.

所有压降曲线是在动力粘度30cSt、密度0.9条件下, 按ISO 3968:2005由矿物油试验得到。

N.B. All the curves have been obtained with mineral oil having a kinematic viscosity 30cSt and specific gravity 0,9; according to the specification ISO 3968:2005.

### 如何选购过滤器 How to order the completed filter



### 如何选购滤芯 How to order the filter element

