



MHT 42MPa(420bar)

高压管路过滤器 High Pressure Inline Filters



K2-K3



Y2-Y3



材料

滤头: 铸铁

下壳体: 钢

滤芯: 玻纤, 滤纸, 编织网

压力 (ISO 10771-1:2002)

最大工作压力: 42 MPa (420 bar)

试验压力: 62 MPa (620 bar)

爆破压力: 126 MPa (1,260 bar)

标准滤芯: 2 MPa (20 bar)

H+ 滤芯: 21 MPa (210 bar)

旁通阀: 600 kPa (6 bar) +/-10%

工作温度: -25° to +110° C

MATERIALS

Head: Cast iron

Bowl: Steel

Element: Inorganic Fibers, Paper, Wire Mesh

PRESSURE (ISO 10771-1:2002)

Max. working: 42 MPa (420 bar)

Test: 62 MPa (620 bar)

Bursting: 126 MPa (1,260 bar)

Element: series standard 2 MPa (20 bar)

serie H+ 21 MPa (210 bar)

BYPASS VALVE:

600 kPa (6 bar) +/-10%

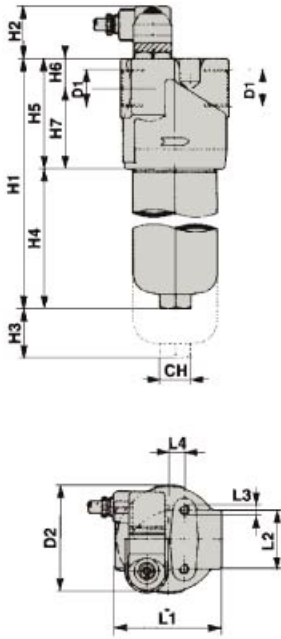
WORKING TEMPERATURE:

From -25° to +110° C

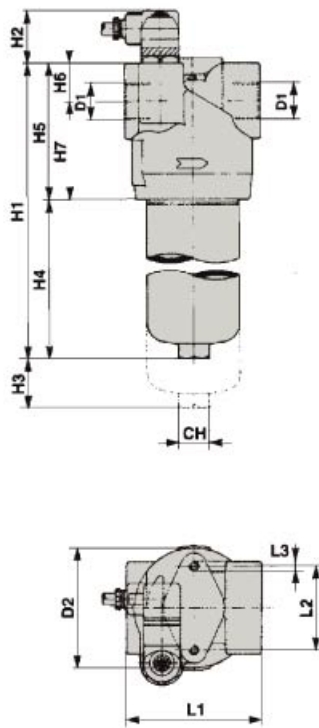
外廓尺寸
DIMENSIONAL LAYOUT

(mm)

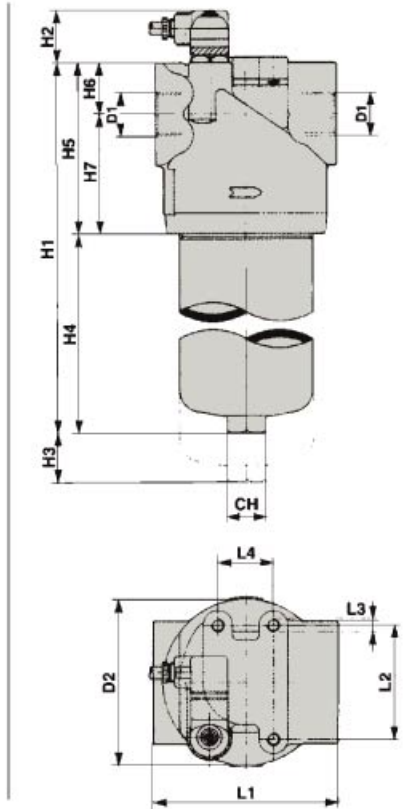
MHT 15...



MHT 30...



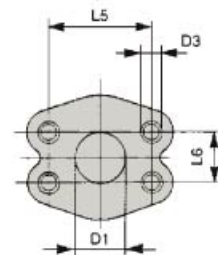
MHT 80...



型号 Type	D1	D2	H1	H2	H3	H4	H5	H6	H7	L1	L2	L3	L4	CH	Kg	
MHT 151	1/2"	3/4"	82	165	43	100	79	86	23	63	85	46	M8 5/16" 18 UNC	12,5	30	4,4
MHT 152	1/2"	3/4"	82	195	43	100	109	86	23	63	85	46		12,5	30	4,6
MHT 153	1/2"	3/4"	82	295	43	100	209	86	23	63	85	46		12,5	30	5,2
MHT 301	3/4"	1"	94	226	43	100	116	110	35	77	107	65		-	30	6,6
MHT 302	3/4"	1"	94	317	43	100	207	110	35	77	107	65	-	30	8,2	
MHT 801	1"	1 1/2"	128	244	43	100	107	137	44	93	143	77	M10 7/16" 14 UNC	43	30	11,0
MHT 802	1"	1 1/2"	128	336	43	100	199	137	44	93	143	77		43	30	13,9
MHT 803	1"	1 1/2"	128	456	43	100	319	137	44	93	143	77		43	30	17,2
MHT 804	1"	1 1/2"	128	557	43	100	420	137	44	93	143	77		43	30	22,0

法兰安装螺栓尺寸 (mm)
Flange mounting bolt dimensions (mm)

型号 Type	代码 Code	D1	最大压力 Max. pressure	L5	L6	D3	T*
MHT 30	H4	3/4"	420 bar	50,8	23,8	M10	14
	E4	3/4"	420 bar	50,8	23,8	3/8" 16 UNC	14
	F5	1"	210 bar	52,4	26,2	M10	14
	D5	1"	210 bar	52,4	26,2	3/8" 16 UNC	14
MHT 80	H6	1 1/4"	420 bar	66,7	31,8	M14	19
	E6	1 1/4"	420 bar	66,7	31,8	1/2" 13 UNC	19
	F6	1 1/4"	210 bar	58,72	30,18	M10	19
	D6	1 1/4"	210 bar	58,72	30,18	7/16" 14 UNC	19
	F7	1 1/2"	210 bar	70,0	35,7	M12	19
	D7	1 1/2"	210 bar	70,0	35,7	1/2" 13 UNC	19

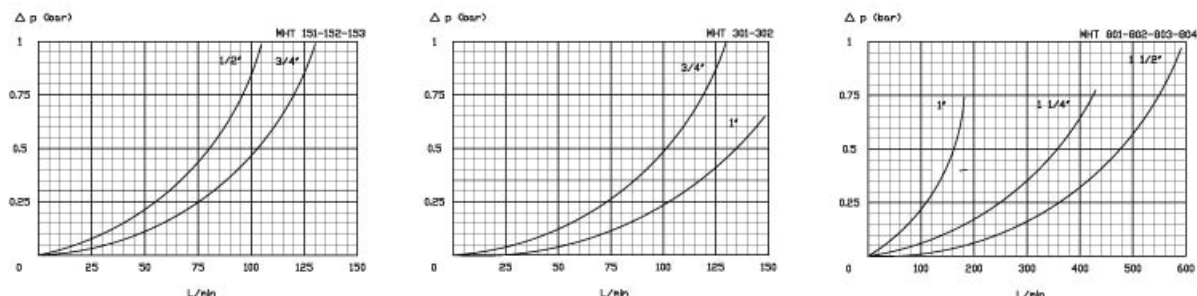


* T =
最小螺纹深度
min. thread depth

过滤器总成的压降等于壳体的压降加上清洁滤芯的压降。在选择流量时，过滤器的阻力最好小于120KPa(1.2bar)。

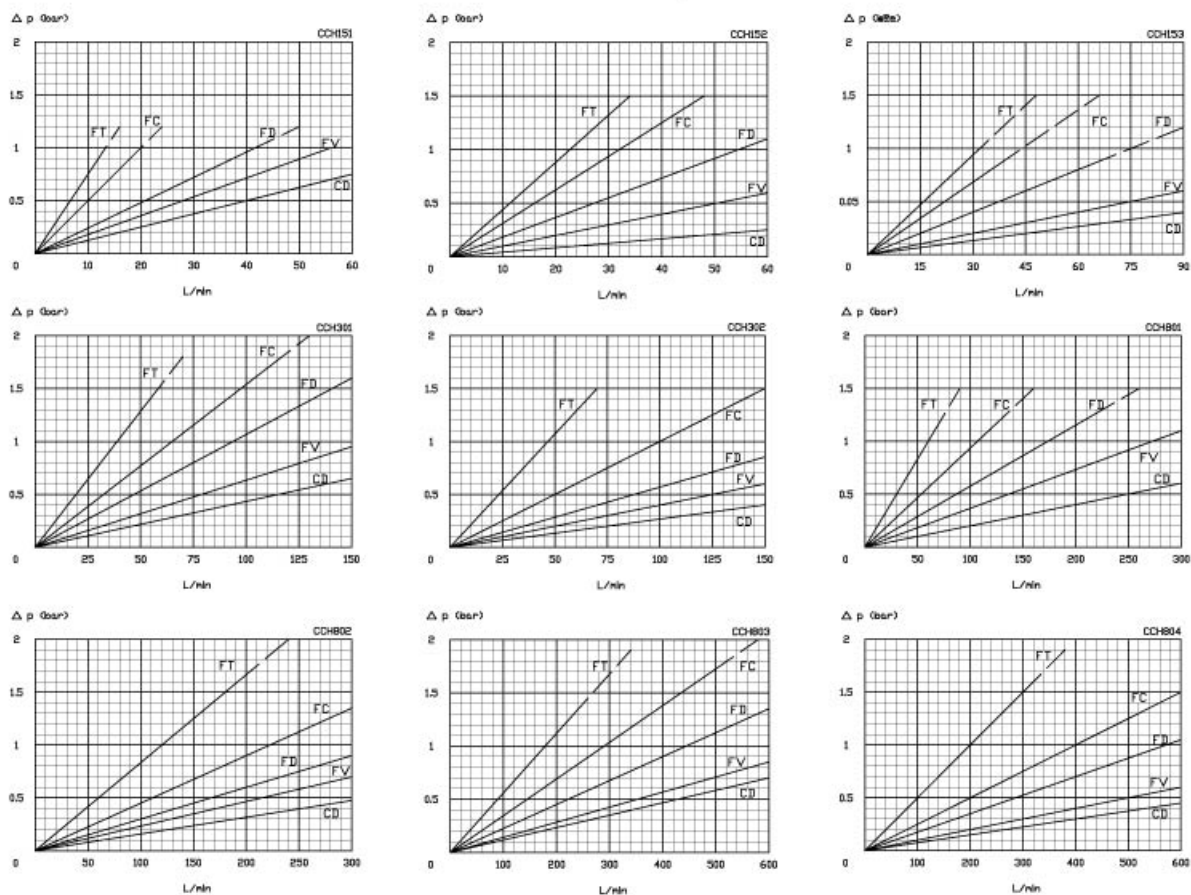
The "Assembly Pressure Drop (ΔP)" is obtained by adding the pressure drop values of the Filter Housing and of the Clean Filter Element corresponding to the considered Flow Rate and it must be lower than 120KPa(1.2bar).

过滤器壳体压降 Filter Housing Pressure Drop



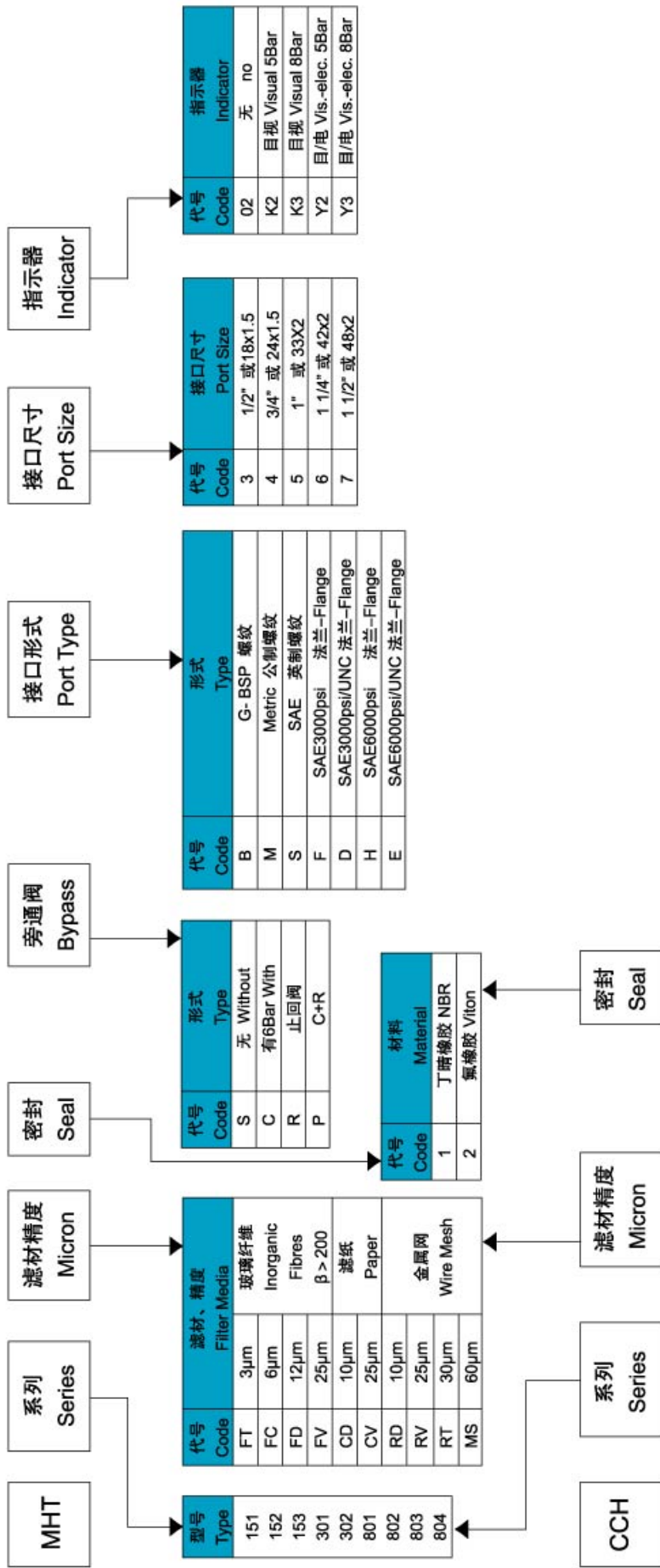
清洁滤芯压降 (滤材: 玻纤和纸)

Clean Filter Element Pressure Drop with F + and C+ Media



所有压降曲线是在动力粘度30cSt、密度0.9条件下，按ISO 3968:2005由矿物油试验得到。
N.B. All the curves have been obtained with mineral oil having a kinematic viscosity 30cSt and specific gravity 0,9; according to the specification ISO 3968:2005.

如何选购过滤器 How to order the completed filter



如何选购滤芯 How to order the filter element