



RFC 1MPa(10bar)

油箱顶置回油过滤器

Tank-Top Return Filters



R1



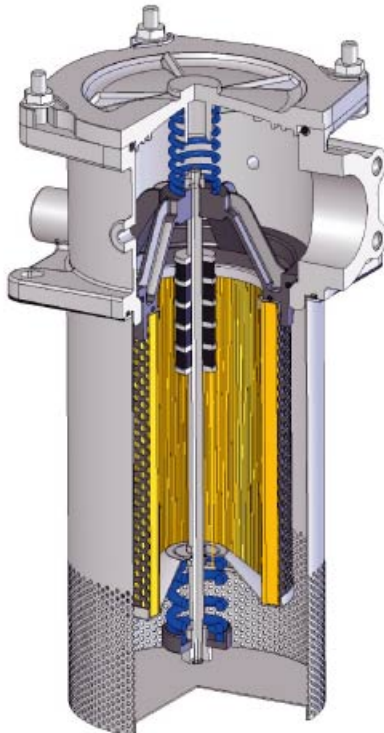
R2



D1



D2



材料

滤头和盖: 铝

扩散器: 钢

滤 芯: 玻纤, 滤纸, 编织网

磁 芯: 合成永磁材料

压力 (ISO 10771-1:2002)

最大工作压力: 1MPa(10bar)

滤芯爆破压力: 1 MPa (10 bar)

旁通阀设置: 150 kPa (1.5bar) +/-10%

工作温度: -25° to +110° C

MATERIALS

Head & cover: Aluminium alloy

Diffuser: Zinc Plated Steel

Element: Inorganic Fibers, Paper, Wire Mesh

Magnetic Core: Synthesized magnetic material

PRESSURE (ISO 10771-1:2002)

Max. working: 1MPa (10 bar)

Collapse, differential for the Element:

1MPa(10bar)

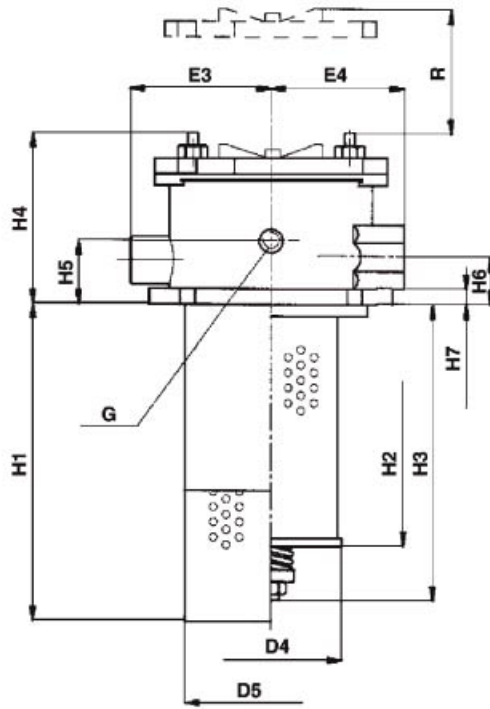
BYPASS VALVE:

150 kPa (1.5bar) +/-10%

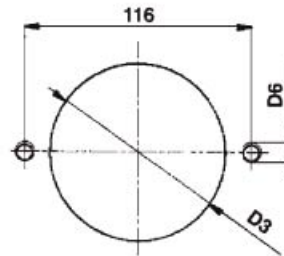
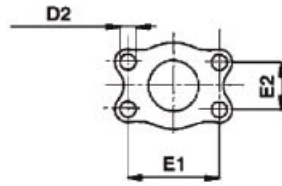
WORKING TEMPERATURE:

From -25° to +110° C

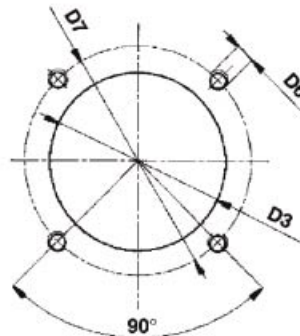
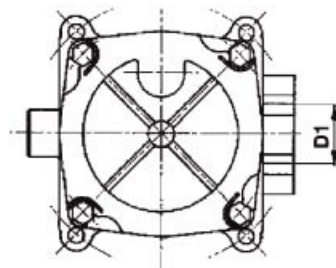
外廓尺寸
DIMENSIONAL LAYOUT



RFC2... 型可根据需要增加入口
extra inlet on request for type RFC2...



RFC 1...



RFC 2...
RFC 3...

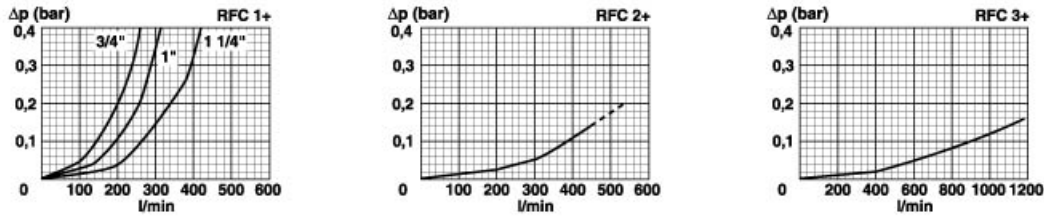
尺寸(mm)与重量(Kg)
DIMENSIONS (mm) AND WEIGHTS (Kg)

	D1	D2	D3	D4	D5	D6	D7	E1	E2	E3	E4	H1	H2	H3	H4	H5	H6	H7	G	R	Kg
RFC 110	3/4"											198	106	140			28			230	1,2
RFC 120	1"											198	150	185	90	38				275	1,4
RFC 130	1 1/4"	-	91	72	89	M8	126	-	-	-	68	250	200	235				6	1/8"	325	1,5
RFC 140	1 1/4"											350	300	335			32			445	1,7
RFC 220	1 1/2" SAE 3000											250	190	225						310	4,2
RFC 230	1 1/2"	M12	134	106	133	M10	175	70	35,7	100	90	320	260	295	129	50	36	12	1/8"	380	4,7
RFC 240	1 1/2"											525	465	500						580	5,0
RFC 310	2 1/2" SAE 3000					M10	215					290	210	260						350	8,0
RFC 320						o	+					370	290	340						430	8,4
RFC 330		M12	166	126	165,5	M12	220	89	50,8	113	110	470	390	440	155	55	55	14	1/8"	580	8,6
RFC 340												560	480	530						620	9,1

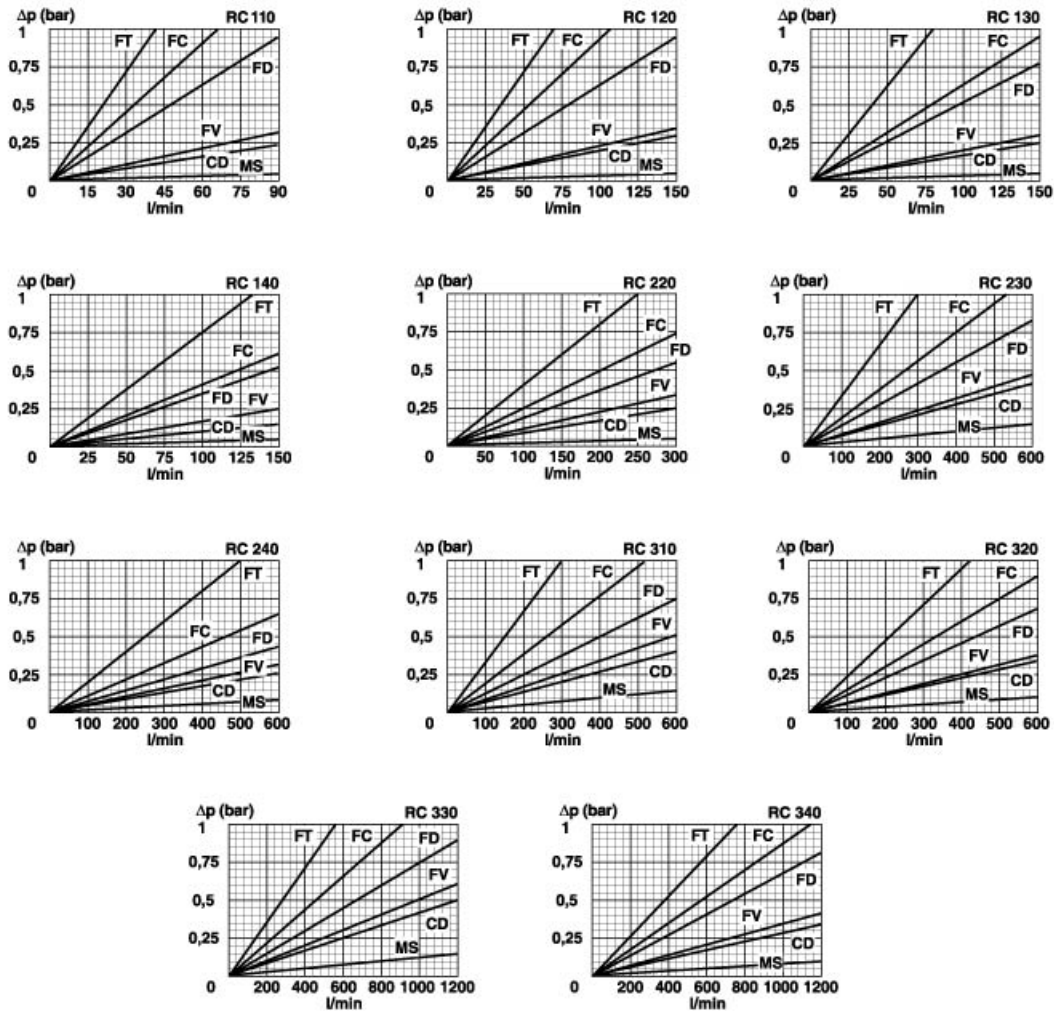
过滤器总成的压降等于壳体的压降加上清洁滤芯的压降。在选择流量时，过滤器的阻力最好小于50KPa(0.5bar)。

The "Assembly Pressure Drop (ΔP)" is obtained by adding the pressure drop values of the Filter Housing and of the Clean Filter Element corresponding to the considered Flow Rate and it must be lower than 50KPa(0.5bar).

过滤器壳体压降 Filter Housing Pressure Drop



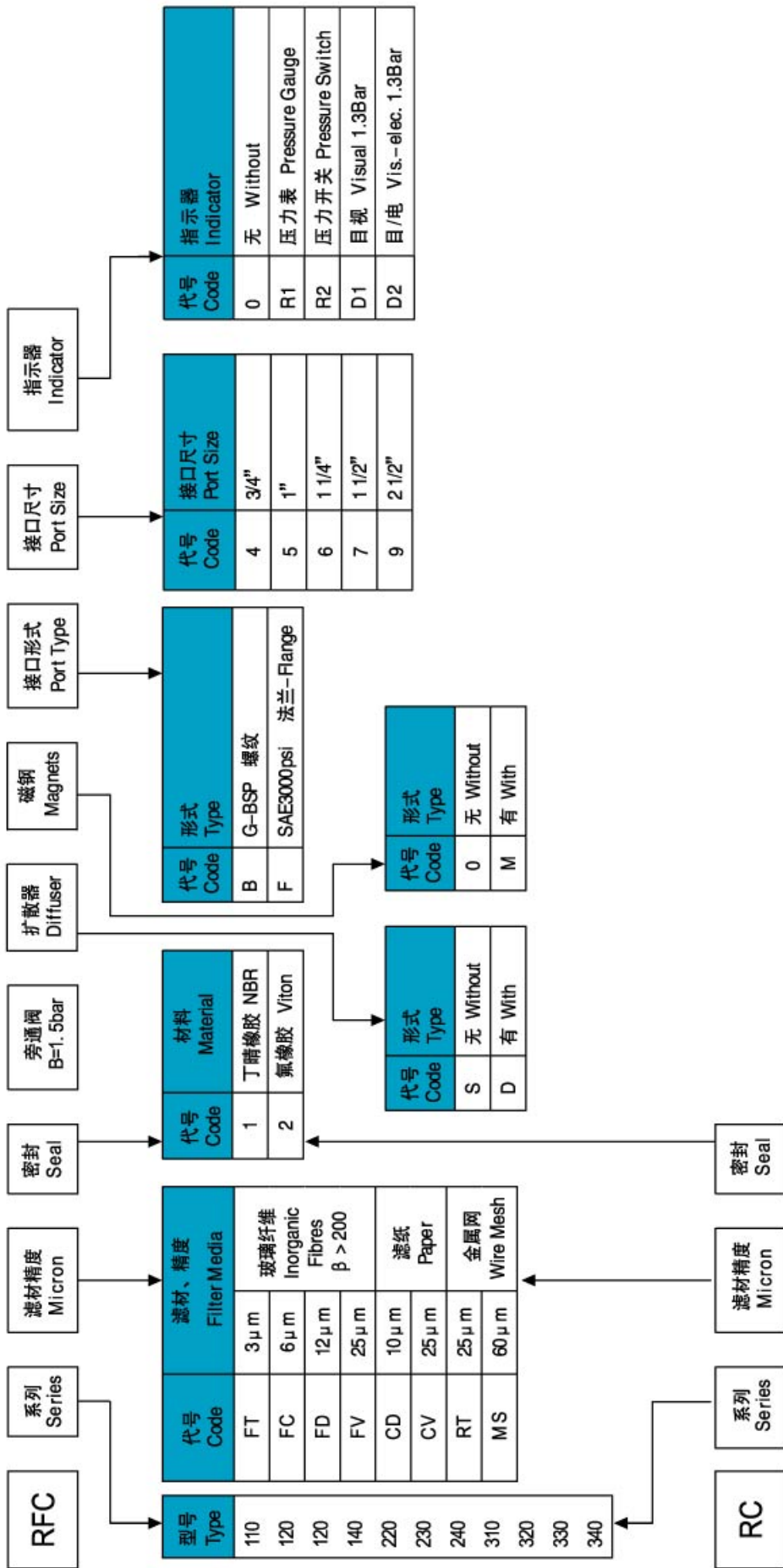
清洁滤芯压降 (玻纤, 纸和金属网) Clean Filter Element Pressure Drop with F + and C+ MS



所有压降曲线是在动力粘度30cSt、密度0.9条件下，按ISO 3968:2005由矿物油试验得到。

N.B. All the curves have been obtained with mineral oil having a kinematic viscosity 30cSt and specific gravity 0,9; according to the specification ISO 3968:2005.

如何选购过滤器
How to order the completed filter



如何选购滤芯
How to order the filter element