

**RFD** 1.6MPa(16bar)

## 油箱顶置双切换 回油过滤器

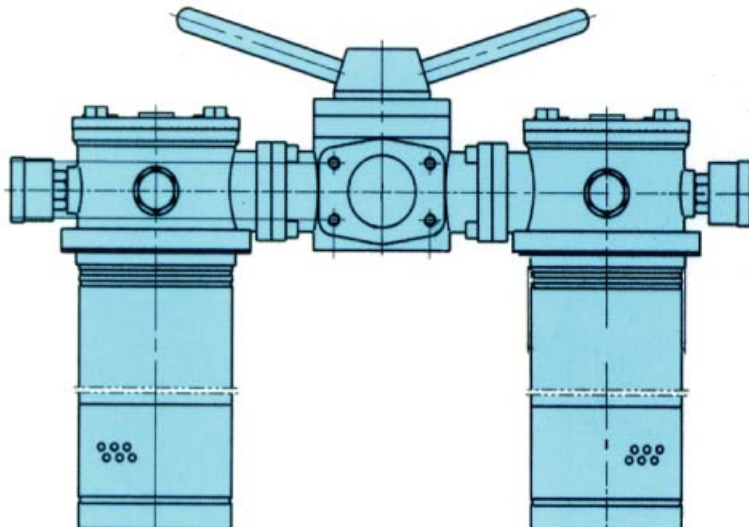
Tank-Top Duplex Return Filters



R1



R2



### 材料

壳体: 铝合金

滤芯: 玻纤, 滤纸和编织网

### 压力 (ISO 10771-1:2002)

最大工作压力: 1.6 MPa (16 bar)

试验压力: 3.2 MPa (32 bar)

爆破压力: 4.8 MPa (48 bar)

标准滤芯爆破压力: 1MPa (10bar)

旁通阀开启压力: 400 kPa (4 bar) +/-10%

指示器发讯压力: 350Kpa (3.5bar) +/-10%

### 工作温度:

-25° to +110° C

### MATERIALS

Housing: Aluminium Alloy

Element: Inorganic Fibers, Paper, Wire Mesh h

### PRESSURE (ISO 10771-1:2002)

Max. working: 1.6 MPa (16 bar)

Test: 3.2 MPa (32 bar)

Bursting: 4.8 MPa (48 bar)

Collapse, differential for the filter element

(ISO 2941): 1MPa (10 bar)

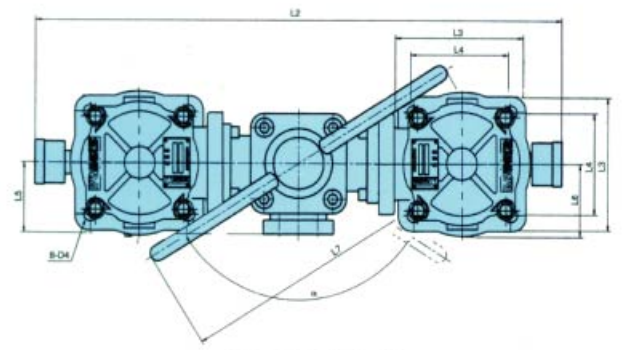
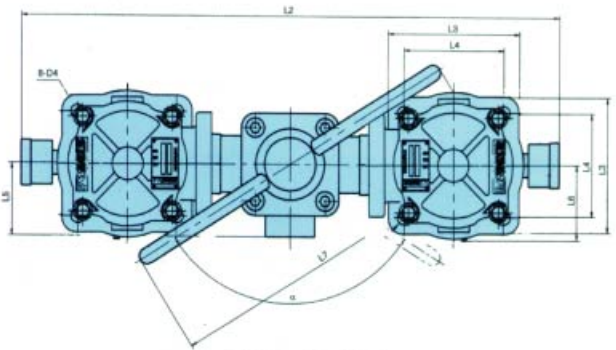
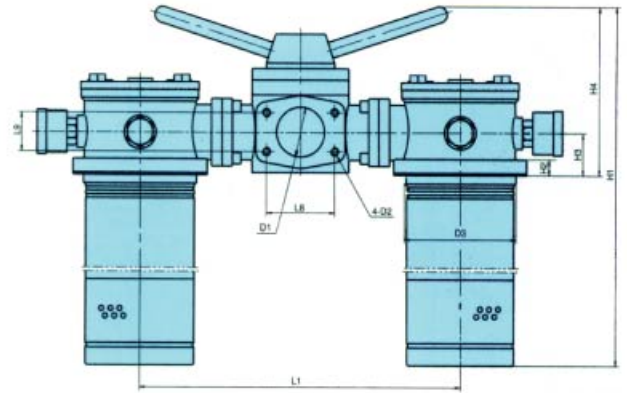
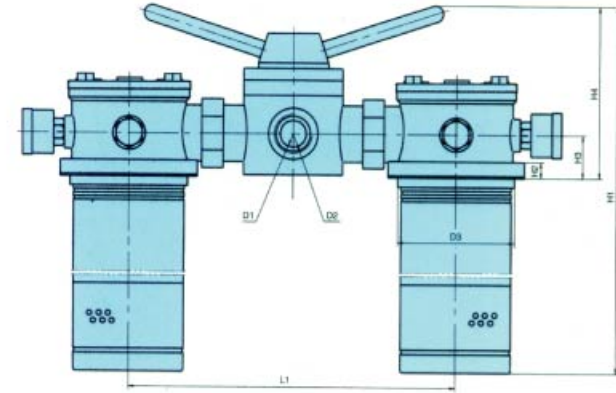
Bypass Valve: Setting 400KPa(4bar) +/-10%

Switch: Setting 350KPa(3.5bar) +/-10%

### WORKING TEMPERATURE:

From -25° to +110° C

外廓尺寸(mm)  
DIMENSIONAL LAYOUT



RFD063-100

RFD160-1000

Type 型号	D1	D2	D3	D4	H1	H2	H3	H4	L1	L2	L3	L4	L5	L6	L7	L8	L9	$\alpha$	焊管 外径 Q													
RFD063	$\phi 32$	G1 1/4	95	9	288	12	33	138	250	430	110	85	60	61	275	--	--	124	--													
RFD100		M42x2			348																											
RFD160	$\phi 50$	M10	110	13	428	15	40	160	320	566	125	95	81	67	350	70	40	116	$\phi 57$													
RFD250					582														$\phi 65$	$\phi 65$												
RFD400	$\phi 65$	M10	130	13	664	18	70	248	370	580	140	110	90	76	400	90	504	116	$\phi 65$													
RFD500	715				$\phi 90$														$\phi 102$													
RFD630	743				160														18	70	248	450	694	170	140	115	93	545	120	70	116	$\phi 102$
RFD800	853																															
RFD1000	$\phi 90$				1033																											

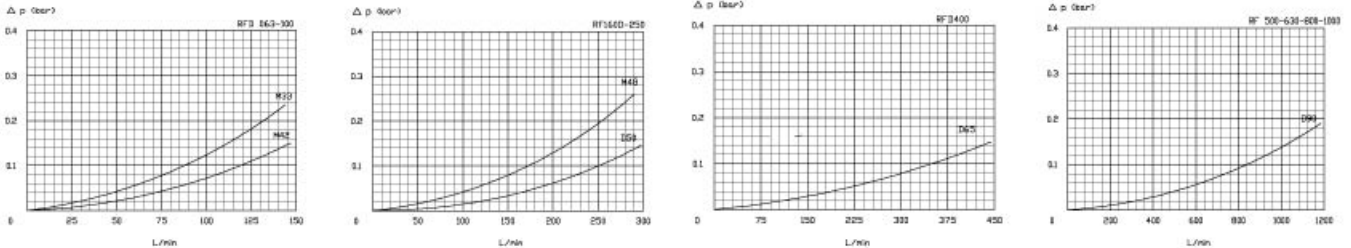
注:本产品配套提供进油口SAE法兰,用户需要准备外径 $\phi Q$ 的管子用于焊接.

Note:the input flange of this series will be supplied by our plant,The user needs to prepare weld steel tube  $\phi Q$  only.

过滤器总成的压降等于壳体的压降加上清洁滤芯的压降。在选择流量时，过滤器的阻力最好小于50KPa(0.5bar)。

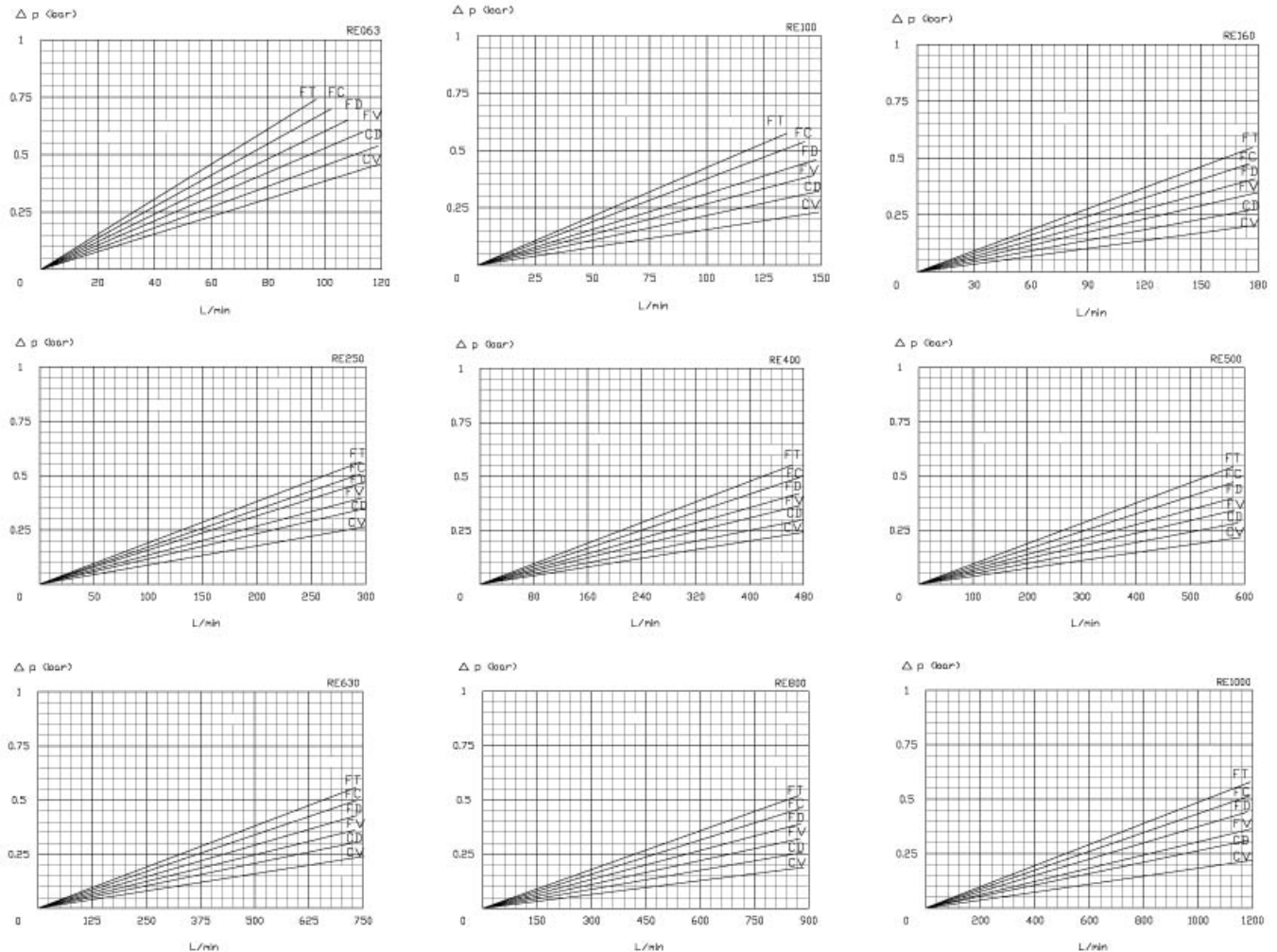
The "Assembly Pressure Drop ( $\Delta P$ )" is obtained by adding the pressure drop values of the Filter Housing and of the Clean Filter Element corresponding to the considered Flow Rate and it must be lower than 50KPa(0.5bar).

### 过滤器壳体压降 Filter Housing Pressure Drop



### 清洁滤芯压降 (滤材: 玻纤, 滤纸)

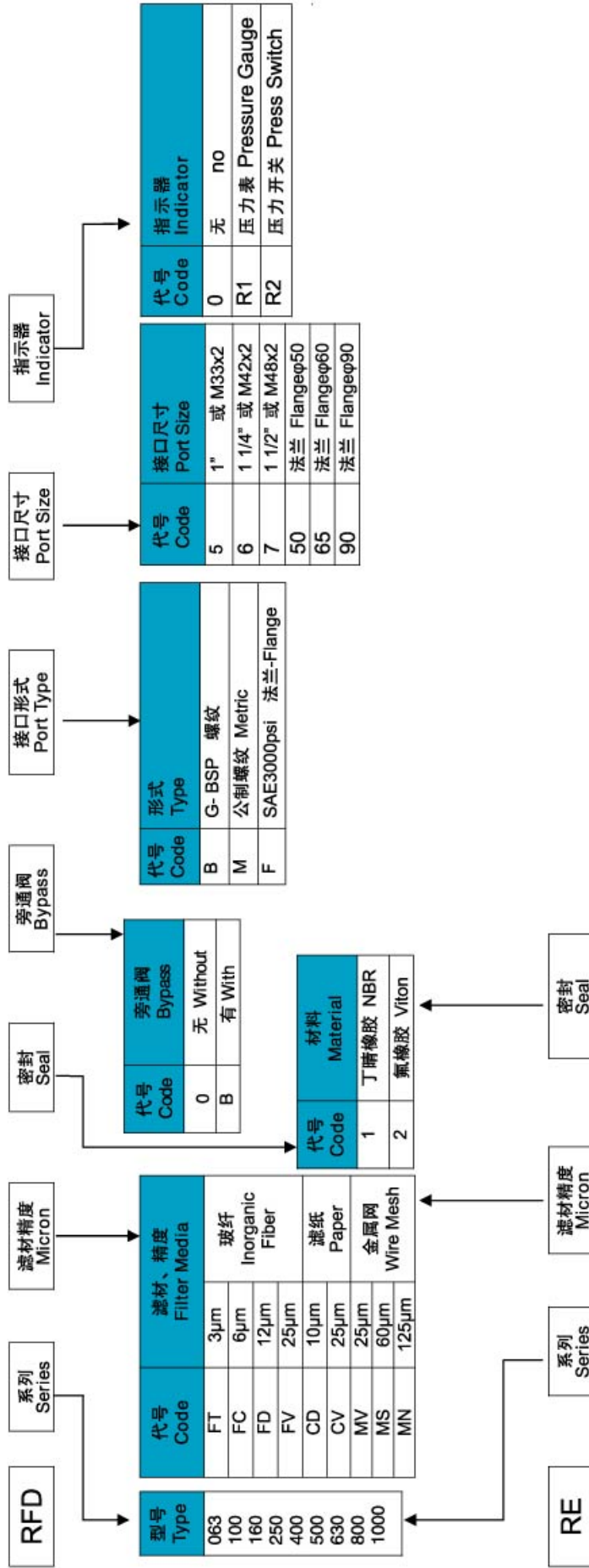
### Clean Filter Element Pressure Drop with Fiber and Paper



所有压降曲线是在动力粘度30cSt、密度0.9条件下，按ISO 3968:2005由矿物油试验得到。

N.B. All the curves have been obtained with mineral oil having a kinematic viscosity 30cSt and specific gravity 0,9; according to the specification ISO 3968:2005.

### 如何选购过滤器 How to order the completed filter



### 如何选购滤芯 How to order the filter element